

RP00338

Leader in Biomolecular Solutions for Life Science



# Recombinant Human M-CSF/CSF1 Protein

Catalog No.: RP00338 **Recombinant**

## Sequence Information

Species	Gene ID	Swiss Prot
Human	1435	P09603

### Tags

C-6×His

### Synonyms

CSF1;CSF-1;MCSF

## Product Information

Source	Purification
HEK293 cells	> 95% by SDS-PAGE.

### Endotoxin

< 1 EU/μg of the protein by LAL method.

### Formulation

Lyophilized from a 0.2 μm filtered solution of 20 mM PB, 150 mM NaCl, pH 7.2. Contact us for customized product form or formulation.

### Reconstitution

Reconstitute to a concentration of 0.1-0.5 mg/mL in sterile distilled water.

## Background

This protein is a cytokine that controls the production, differentiation, and function of macrophages. The active form of the protein is found extracellularly as a disulfide-linked homodimer, and is thought to be produced by proteolytic cleavage of membrane-bound precursors. The encoded protein may be involved in development of the placenta. Alternate splicing results in multiple transcript variants.

## Basic Information

### Description

Recombinant Human M-CSF/CSF1 Protein is produced by Human Cell expression system. The target protein is expressed with sequence (Glu33-Arg255) of human M-CSF/CSF1 (Accession #P09603) fused with a 6×His tag at the C-terminus.

### Bio-Activity

### Storage

Store the lyophilized protein at -20°C to -80 °C for long term. After reconstitution, the protein solution is stable at -20 °C for 3 months, at 2-8 °C for up to 1 week.

Avoid repeated freeze/thaw cycles.

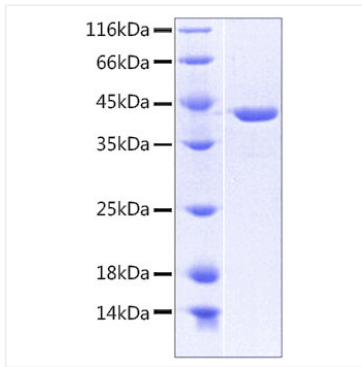
## Contact



[www.abclonal.com](http://www.abclonal.com)

## Validation Data

---



Recombinant protein Human M-CSF/CSF1 was determined by SDS-PAGE under reducing conditions with Coomassie Blue, showing a band at 45 kDa.