

**Bassoon Antibody**  
Catalog # ASM10461

**Specification**

---

**Bassoon Antibody - Product Information**

Application	<b>IHC, WB</b>
Primary Accession	<a href="#">Q9UPA5</a>
Other Accession	<a href="#">NP_003449.2</a>
Host	<b>Rabbit</b>
Reactivity	<b>Human, Mouse, Rat</b>
Clonality	<b>Polyclonal</b>

**Description**

Rabbit Anti-Human Bassoon Polyclonal

**Target/Specificity**

Detects ~420kDa. Multiple isoforms can be detected.

**Other Names**

BSN Antibody, ZNF231 Antibody, Neuronal double zinc finger protein Antibody

**Immunogen**

NM\_003458.3 (AA 786-1041) N-terminal his-tagged fusion protein

**Purification**

Protein A Purified

Storage **-20°C**

**Storage Buffer**

PBS pH7.4, 50% glycerol, 0.09% sodium azide

Shipping Temperature **Blue Ice or 4°C**

**Certificate of Analysis**

1 µg/ml of SPC-198 was sufficient for detection of Bassoon in 10 µg of rat brain tissue lysate by colorimetric immunoblot analysis using goat ant rabbit IgG:HRP as the secondary antibody.

**Cellular Localization**

Cytoplasm | Cell Junction | Synapse

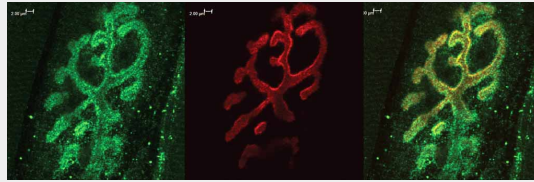
**Bassoon Antibody - Protocols**

Provided below are standard protocols that you may find useful for product applications.

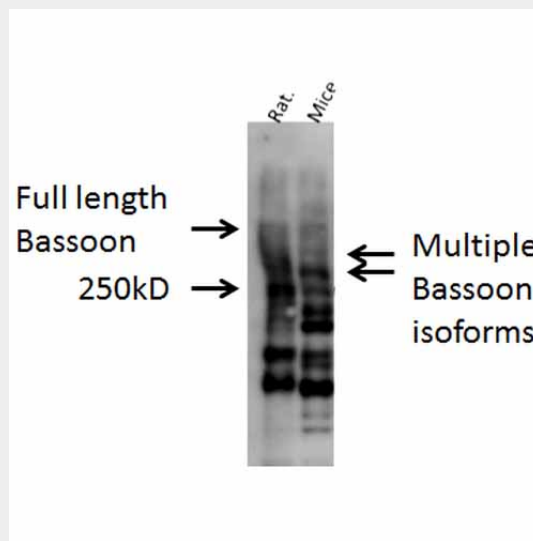
- [Western Blot](#)
- [Blocking Peptides](#)
- [Dot Blot](#)
- [Immunohistochemistry](#)
- [Immunofluorescence](#)
- [Immunoprecipitation](#)
- [Flow Cytometry](#)

- [Cell Culture](#)

## Bassoon Antibody - Images



Immunohistochemistry analysis using Rabbit Anti-Bassoon Polyclonal Antibody (ASM10461). Tissue: Muscle. Species: Mouse. Primary Antibody: Rabbit Anti-Bassoon Polyclonal Antibody (ASM10461) at 1:400. Secondary Antibody: Alexa Fluor 488 Goat Anti-Rabbit. Counterstain: BTX (red). Localization: Selective staining of the NMJ.



Western blot analysis of Mouse, Rat brain cell lysates showing detection of Bassoon protein using Rabbit Anti-Bassoon Polyclonal Antibody (ASM10461). Primary Antibody: Rabbit Anti-Bassoon Polyclonal Antibody (ASM10461) at 1:1000.

## Bassoon Antibody - Background

Bassoon is a 420 kDa protein that is localized at the presynaptic nerve terminals and is believed to play a role in the structural and functional organization of the synaptic vesicle cycle. Bassoon is predicted to contain two double-zinc fingers, three coiled-coil regions, and two polyglutamine domains. The polyglutamine domains in the C-terminus are of interest, since it is known that for some human proteins, such as Huntington, abnormal amplification of this region can cause late-onset neurodegeneration. Bassoon is concentrated at sites opposite to postsynaptic densities in synaptic terminals and in cultured neurons, it is found to co-localize with GABA (A) and glutamate (GluR1) receptors (1).

## Bassoon Antibody - References

1. Anna Dondzillo et al., (2010) J. Comp Neur, 518(7): 1008-1029.