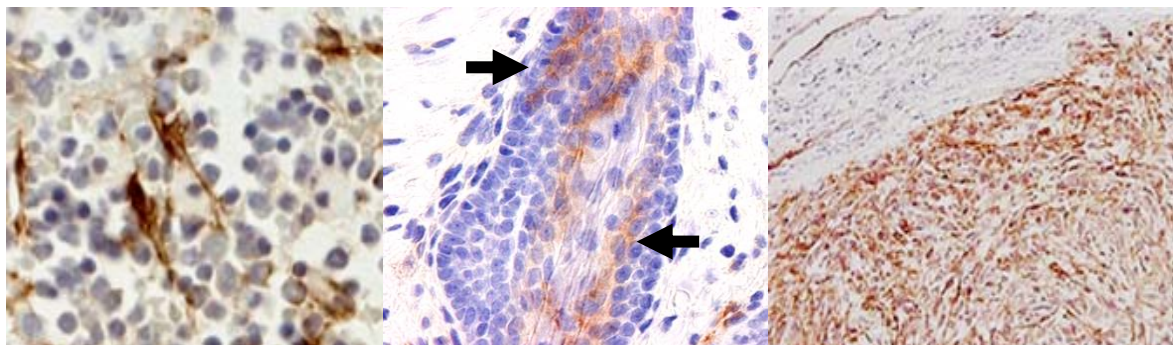




## Anti Rat Somatic Stem Cell-Recognizing Monoclonal Antibody (Clone No. A3)

Package Size	50µg (200µL / vial)
Format	Mouse monoclonal antibody 0.25mg/mL
Buffer	PBS [containing 2% Block Ace as a stabilizer, 0.1% Proclin as a bacteriostat]
Storage	Store below -20°C Once thawed, store at 4°C. Repeated freeze-thaw cycles should be avoided.
Clone No.	A3
Sub class	IgG1
Purification method	The splenic lymphocytes from BALB/c mouse, immunized with MFH-derived MT-8, were fused to myeloma P3X63 Ag8.653 cells. The cell line (A3) with positive reaction was grown in ascitic fluid of BALB/c mouse, from which the antibody was purified by Protein G affinity chromatography.
Use	Immunohistochemistry (culture cell: acetone/ethanol (50:50) fixed, tissue: paraffin section after PLP-fixative fixed, and frozen tissue section), Western blotting
Working dilution	For Immunohistochemistry ; 1~2µg/mL For Western blotting ; 1~2µg/mL

A3 immunohistochemical staining using rat tissue



Left, Bone marrow mesenchymal stem cells

Middle, Supra-basal cells of follicular bulge

Right, MFH tumor cells

Dr. Yamate, J. at Laboratory of Veterinary Pathology,  
Graduate School of Veterinary Sciences, Osaka Metropolitan University



## Anti Rat Somatic Stem Cell-Recognizing Monoclonal Antibody (Clone No. A3)

### 【References】

1	Katou-Ichikawa C, <i>et al.</i> Participation of somatic stem cells, labeled by a unique antibody (A3) recognizing both N-glycan and peptide, to hair follicle cycle and cutaneous wound healing in rats. <i>Int J Mol Sci.</i> 21(11): 3806. 2020.
2	Nahid R., <i>et al.</i> Characterization of immature myofibroblasts of stellate cell or mesenchymal cell origin in d-galactosamine-induced liver injury in rats. <i>Vet Pathol.</i> 58(1): 80-90. 2021.
3	Nishina H, <i>et al.</i> Participation of somatic stem cells, recognized by a unique A3 antibody, in mucosal epithelial regeneration in dextran sulfate sodium (DSS)-induced rat colonic lesions. <i>Toxicol Pathol.</i> 48(4): 560-569. 2020.
4	Nishina H, <i>et al.</i> The localization and distribution of cells labeled by a somatic stem cell-recognizing antibody (A3) in rat colon development; possible presence of a new cell type forming the intestinal stem cell niche. <i>J Toxicol Pathol.</i> 32(1): 37-48. 2019.
5	Koga M, <i>et al.</i> Immunohistochemical characterization of myofibroblasts appearing in isoproterenol-induced rat myocardial fibrosis. <i>J Vet Med Sci.</i> 81(1): 127-133. 2019.
6	Kotera T, <i>et al.</i> Rat malignant fibrous histiocytoma (MFH)-derived cloned cell lines (MT-8 and MT-9) show different differentiation in mesenchymal stem cell lineage. <i>Exp Toxicol Pathol.</i> 67(10): 499-507. 2015.
7	Tennakoon AH, <i>et al.</i> Immunohistochemical characterization of glial fibrillary acidic protein (GFAP)-expressing cells in a rat liver cirrhosis model induced by repeated injections of thioacetamide (TAA). <i>Exp Toxicol Pathol.</i> 67(1): 53-63. 2015.
8	Ichikawa C, <i>et al.</i> Rat hair follicle-constituting cells labeled by a newly-developed somatic stem cell-recognizing antibody: a possible marker of hair follicle development. <i>Histol Histopathol.</i> 28(2): 257-268. 2013.
9	Hori M, <i>et al.</i> Distribution of cells labelled by a novel somatic stem cell-recognizing antibody (A3) in pulmonary genesis and bleomycin-induced pulmonary fibrosis in rats. <i>J Comp Pathol.</i> 148(4): 385-395. 2013.
10	Juniantito V, <i>et al.</i> Immunophenotypical analyses of myofibroblasts in rat excisional wound healing: possible transdifferentiation of blood vessel pericytes and perifollicular dermal sheath cells into myofibroblasts. <i>Histol Histopathol.</i> 27(4): 515-527. 2012.
11	Yamate J, <i>et al.</i> Adipogenic, osteogenic and myofibrogenic differentiations of a rat malignant fibrous histiocytoma (MFH)-derived cell line, and a relationship of MFH cells with embryonal mesenchymal, perivascular and bone marrow stem cells. <i>Eur J Cancer.</i> 43(18): 2747-2756. 2007.

#### Manufacturer



Medicinal Chemistry Pharmaceutical Co., Ltd.

#### Kobe Research Institute

7-1-14 Minatojima-minami-machi, Chuo-ku, Kobe, Japan 650-0047

Telephone: +81-78-945-7075 FAX: +81-78-306-0694

URL: <https://soyaku.co.jp/english/> tech-kobe@soyaku.co.jp

#### Previous manufacturer



Trans Genic Inc.