

Rubicon Antibody
Catalog # ASM10535**Specification**

Rubicon Antibody - Product Information

Application	WB
Primary Accession	O92622
Other Accession	NP_001139114.1
Host	Rabbit
Reactivity	Human
Clonality	Polyclonal

Description

Rabbit Anti-Human Rubicon Polyclonal

Target/Specificity

Detects ~95 kDa.

Other Names

Run domain Beclin-1-interacting and cysteine-rich domain-containing protein Antibody, KIAA0226 Antibody, Rubicon Antibody, Baron Antibody, RUBCN Antibody, Beclin-1 associated RUN domain containing protein Antibody

Immunogen

Synthetic peptide from the N-terminal of Human Rubicon

Purification

Peptide Affinity Purified

Storage **-20°C****Storage Buffer**

PBS, 50% glycerol, 0.09% sodium azide

Shipping Temperature **Blue Ice or 4°C****Certificate of Analysis**

A 1:1000 dilution of SPC-668 was sufficient for detection of Rubicon in 15 µg of human HeLa cell lysates by ECL immunoblot analysis using goat anti-rabbit IgG:HRP as the secondary antibody.

Cellular Localization

Late Endosome | Lysosome | Early Endosome

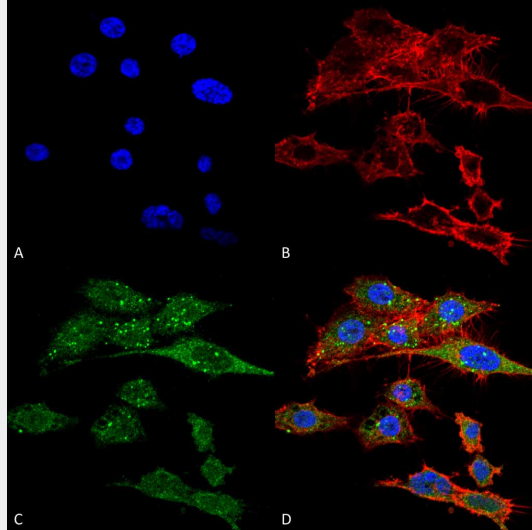
Rubicon Antibody - Protocols

Provided below are standard protocols that you may find useful for product applications.

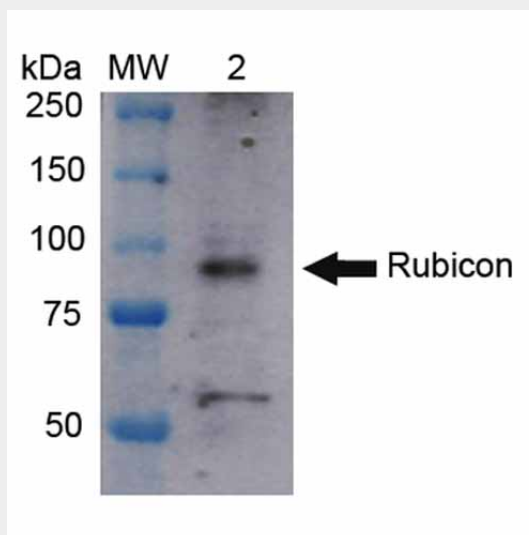
- [Western Blot](#)
- [Blocking Peptides](#)
- [Dot Blot](#)
- [Immunohistochemistry](#)
- [Immunofluorescence](#)

- [Immunoprecipitation](#)
- [Flow Cytometry](#)
- [Cell Culture](#)

Rubicon Antibody - Images



Immunocytochemistry/Immunofluorescence analysis using Rabbit Anti-Rubicon Polyclonal Antibody (ASM10535). Tissue: Colon carcinoma cell line (RKO). Species: Human. Fixation: 4% Formaldehyde for 15 min at RT. Primary Antibody: Rabbit Anti-Rubicon Polyclonal Antibody (ASM10535) at 1:100 for 60 min at RT. Secondary Antibody: Goat Anti-Rabbit ATTO 488 at 1:100 for 60 min at RT. Counterstain: Phalloidin Texas Red F-Actin stain; DAPI (blue) nuclear stain at 1:1000, 1:5000 for 60 min at RT, 5 min at RT. Localization: Late Endosome, Lysosome, Early Endosome. Magnification: 60X. (A) DAPI nuclear stain. (B) Phalloidin Texas Red F-Actin stain. (C) Rubicon Antibody. (D) Composite.



Western blot analysis of Human HeLa cell lysates showing detection of ~108 kDa Rubicon protein using Rabbit Anti-Rubicon Polyclonal Antibody (ASM10535). Lane 1: Molecular Weight Ladder (MW). Lane 2: HeLa cell lysates. Load: 15 µg. Block: 5% Skim Milk in 1X TBST. Primary Antibody: Rabbit Anti-Rubicon Polyclonal Antibody (ASM10535) at 1:1000 for 2 hours at RT. Secondary Antibody: Goat Anti-Rabbit IgG: HRP at 1:1000 for 60 min at RT. Color Development: ECL solution for 6 min in RT. Predicted/Observed Size: ~108 kDa.