

**ATG4C Antibody**  
Catalog # ASM10514**Specification****ATG4C Antibody - Product Information**

Application	<b>WB</b>
Primary Accession	<a href="#">Q96DT6</a>
Other Accession	<a href="#">NP_116241.2</a>
Host	<b>Rabbit</b>
Reactivity	<b>Human</b>
Clonality	<b>Polyclonal</b>

**Description**

Rabbit Anti-Human ATG4C Polyclonal

**Target/Specificity**

Detects ~50 kDa.

**Other Names**

AUT like 1cysteine endopeptidase (*S. cerevisiae*) Antibody, APG4 autophagy 4 homolog C Antibody, Cysteine protease ATG4C Antibody, APG4-C Antibody, Autophagy-related cysteine endopeptidase 3 Antibody, EC:3.4.22.- Antibody, ATG 4C Antibody, AUT like 1, cysteine endopeptidase Antibody, EC 3.4.22 Antibody, APG4C Antibody, Autophagin-3 Antibody, OTTHUMP00000010715 Antibody, AUTL3 Antibody, APG4 autophagy 4 homolog C (*S. cerevisiae*) Antibody, Autophagy related cysteine endopeptidase 3 Antibody, ATG4C Antibody, Autophagin 3 Antibody, ATG4 autophagy related 4 homolog C Antibody, AUT like 3 cysteine endopeptidase Antibody, AUTL1 Antibody, ATG4C\_HUMAN Antibody, AUT (*S. cerevisiae*) like 1, cysteine endopeptidase Antibody, Autophagy-related protein 4 homolog C Antibody, Autophagy related protein 4 homolog C Antibody, ATG4 autophagy related 4 homolog C (*S. cerevisiae*) Antibody, Autophagy related 4C cysteine peptidase Antibody, Atg4c Antibody, APG4 C Antibody, FLJ14867 Antibody, AUT-like 3 cysteine endopeptidase Antibody,

**Immunogen**

Synthetic peptide from the C-terminal of Human ATG4C (aa. 296-306)

**Purification**

Peptide Affinity Purified

Storage **-20°C****Storage Buffer**

PBS, 50% glycerol, 0.09% sodium azide

Shipping Temperature

**Blue Ice or 4°C****Certificate of Analysis**

A 1:1000 dilution of SPC-633 was sufficient for detection of ATG4C in 15 µg of Human HeLa Cell Lysates by ECL immunoblot analysis using goat anti-rabbit IgG:HRP as the secondary antibody.

**Cellular Localization**

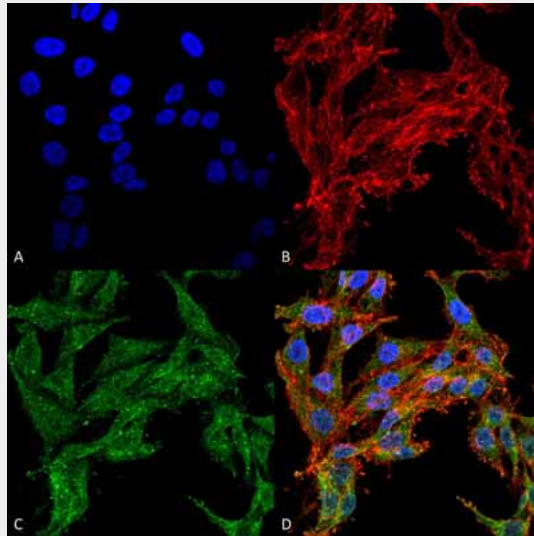
Cytoplasm

**ATG4C Antibody - Protocols**

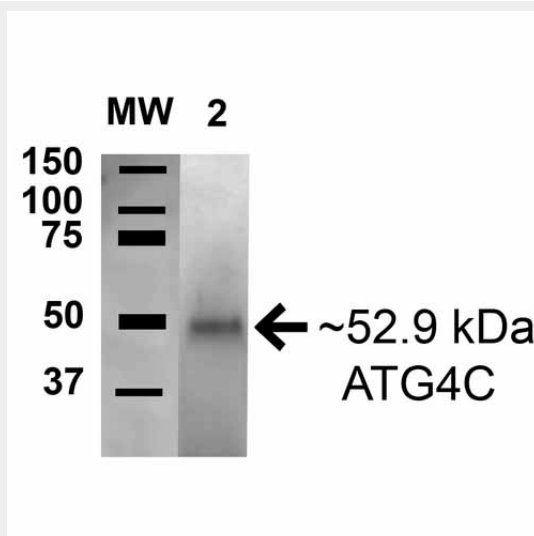
Provided below are standard protocols that you may find useful for product applications.

- [Western Blot](#)
- [Blocking Peptides](#)
- [Dot Blot](#)
- [Immunohistochemistry](#)
- [Immunofluorescence](#)
- [Immunoprecipitation](#)
- [Flow Cytometry](#)
- [Cell Culture](#)

**ATG4C Antibody - Images**



Immunocytochemistry/Immunofluorescence analysis using Rabbit Anti-ATG4C Polyclonal Antibody (ASM10514). Tissue: Colon carcinoma cell line (RKO). Species: Human. Fixation: 4% Formaldehyde for 15 min at RT. Primary Antibody: Rabbit Anti-ATG4C Polyclonal Antibody (ASM10514) at 1:100 for 60 min at RT. Secondary Antibody: Goat Anti-Rabbit ATTO 488 at 1:100 for 60 min at RT. Counterstain: Phalloidin Texas Red F-Actin stain; DAPI (blue) nuclear stain at 1:1000, 1:5000 for 60 min at RT, 5 min at RT. Localization: Cytoplasm. Magnification: 60X. (A) DAPI nuclear stain. (B) Phalloidin Texas Red F-Actin stain. (C) ATG4C Antibody. (D) Composite.



Western blot analysis of Human HEK293T cell lysates showing detection of 53 kDa ATG4C protein using Rabbit Anti-ATG4C Polyclonal Antibody (ASM10514). Lane 1: Molecular Weight Ladder (MW). Lane 2: Human HEK293T cell lysates. Load: 15  $\mu$ g . Block: 2% GE Ashermsham in 1X TBST. Primary Antibody: Rabbit Anti-ATG4C Polyclonal Antibody (ASM10514) at 1:1000 for 16 hours at 4°C. Secondary Antibody: Goat Anti-Rabbit HRP at 1:2000 for 60 min at RT. Color Development: ECL solution for 6 minutes in RT. Predicted/Observed Size: 53 kDa.