

**Ghrelin Antibody**  
Catalog # ASM10553

**Specification**

---

**Ghrelin Antibody - Product Information**

Application	<b>WB</b>
Primary Accession	<a href="#">O9UBU3</a>
Other Accession	<a href="#">NP_001128413.1</a>
Host	<b>Rabbit</b>
Reactivity	<b>Rat</b>
Clonality	<b>Polyclonal</b>

**Description**

Rabbit Anti-Human Ghrelin Polyclonal

**Target/Specificity**

Detects ~13 kDa.

**Other Names**

Appetite-regulating hormone Antibody, ghrl Antibody, Ghrelin 28 Antibody, Protein M46 Antibody, GHRL\_HUMAN Antibody, GHRL Antibody, Ghrelin Antibody, Growth hormone-releasing peptide Antibody, Motilin-related peptide Antibody, Appetite regulating hormone Antibody, Growth hormone releasing peptide Antibody, Growth hormone secretagogue Antibody, Motilin related peptide Antibody, Ghrelin/obestatin prepropeptide Antibody, Obestatin Antibody, MTLRP Antibody, Ghrelin 27 Antibody, M46 protein Antibody

**Immunogen**

Synthetic peptide from the mid-protein of Human Ghrelin

**Purification**

Peptide Affinity Purified

Storage **-20°C**

**Storage Buffer**

PBS, 50% glycerol, 0.09% sodium azide

Shipping Temperature **Blue Ice or 4°C**

**Certificate of Analysis**

A 1:1000 dilution of SPC-696 was sufficient for detection of Ghrelin in 15 µg of rat Pancreas cell lysates by ECL immunoblot analysis using goat anti-rabbit IgG:HRP as the secondary antibody.

**Cellular Localization**

Secreted

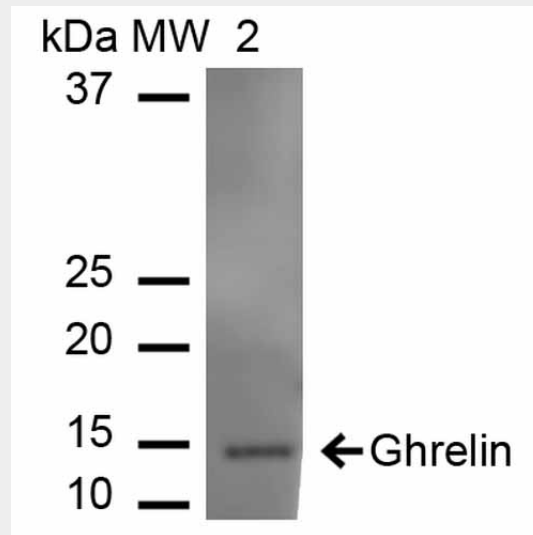
**Ghrelin Antibody - Protocols**

Provided below are standard protocols that you may find useful for product applications.

- [Western Blot](#)
- [Blocking Peptides](#)

- [Dot Blot](#)
- [Immunohistochemistry](#)
- [Immunofluorescence](#)
- [Immunoprecipitation](#)
- [Flow Cytometry](#)
- [Cell Culture](#)

### Ghrelin Antibody - Images



Western blot analysis of Rat Pancreas showing detection of ~12.9 kDa Ghrelin protein using Rabbit Anti-Ghrelin Polyclonal Antibody (ASM10553). Lane 1: Molecular Weight Ladder (MW). Lane 2: Rat Pancreas cell lysates. Load: 15  $\mu$ g. Block: 5% Skim Milk in 1X TBST. Primary Antibody: Rabbit Anti-Ghrelin Polyclonal Antibody (ASM10553) at 1:1000 for 60 min at RT. Secondary Antibody: Goat Anti-Rabbit IgG: HRP at 1:2000 for 60 min at RT. Color Development: ECL solution for 6 min in RT. Predicted/Observed Size: ~12.9 kDa.