

---

**C-Reactive Protein**                      **Human, Recombinant, *E. coli***

**Cat. No.:**      NB-02-0773              **Size:** 1000µg, 100µg, 10µg

---

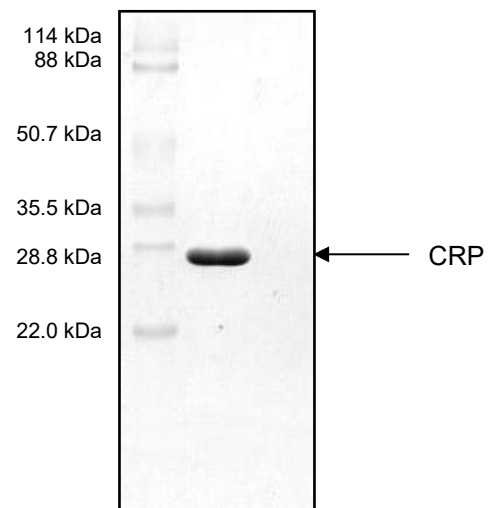
**Synonym:**              CRP

**Description:**              Human C reactive protein (CRP) is a member of the pentraxin family of serum proteins and is composed of five identical non-covalently linked subunits. CRP is one of the major plasma proteins that increase in concentration during the acute phase response to tissue injury or inflammation. Increased serum levels of CRP have been associated with myocardial infarction, atherosclerosis and end-stage kidney disease.

The amino acid sequence of ABX recombinant CRP is the same as the native form and is produced in *E. coli*. This product is for research use only and is not intended for diagnostic or therapeutic use.

**Form:**                      Liquid

**Purity:**                      >95% by SDS-PAGE



**References:**              Woo, P *et al.*, (1985) *J. Biol. Chem.* **260** (24): 13384-13388.  
Pai, J.K. *et al.*, (2004) *N. Engl. J. Med.* **351** (25): 2599-2610.