

**ESR1 Antibody**  
Catalog # ASM10562

**Specification**

---

**ESR1 Antibody - Product Information**

Application	<b>WB</b>
Primary Accession	<a href="#">P03372</a>
Other Accession	<a href="#">NP_000116.2</a>
Host	<b>Rabbit</b>
Reactivity	<b>Human</b>
Clonality	<b>Polyclonal</b>

**Description**

Rabbit Anti-Human ESR1 Polyclonal

**Target/Specificity**

Detects ~66 kDa.

**Other Names**

Estrogen receptor alpha Antibody, ER alpha Antibody, ER-alpha Antibody, Estrogen receptor alpha delta 3\*, 4, 5, 6, 7\*/819 2 isoform Antibody, NR3A1 Antibody, Nuclear receptor subfamily 3 group A member 1 Antibody, Estrogen receptor alpha delta 4\*, 5, 6, 7\*/654 isoform Antibody, ESR1\_HUMAN Antibody, ESTRR Antibody, Era Antibody, Estrogen receptor alpha delta 3\*, 4, 5, 6, 7\*, 8\*/941 isoform Antibody, Estrogen receptor 1 Antibody, Estrogen receptor alpha 3\*, 4, 5, 6, 7\*/822 isoform Antibody, DKFZp686N23123 Antibody, Estrogen receptor alpha delta 4\*, 5, 6, 7, 8\*/901 isoform Antibody, Estrogen receptor Antibody, Estrogen receptor alpha E1 E2 1 2 Antibody, ESR1 Antibody, Estrogen receptor alpha E1 N2 E2 1 2 Antibody, Estrogen nuclear receptor alpha Antibody, ESR Antibody, ER Antibody, ESRA Antibody, Estrogen receptor alpha delta 4 +49 isoform Antibody, Estradiol receptor Antibody

**Immunogen**

Synthetic peptide from the mid-protein of Human ESR1

**Purification**

Peptide Affinity Purified

Storage **-20°C**

**Storage Buffer**

PBS, 50% glycerol, 0.09% sodium azide

Shipping Temperature

**Blue Ice or 4°C**

**Certificate of Analysis**

A 1:1000 dilution of SPC-708 was sufficient for detection of ESR1 in 15 µg of human HeLa cell lysates by ECL immunoblot analysis using goat anti-rabbit IgG:HRP as the secondary antibody.

**Cellular Localization**

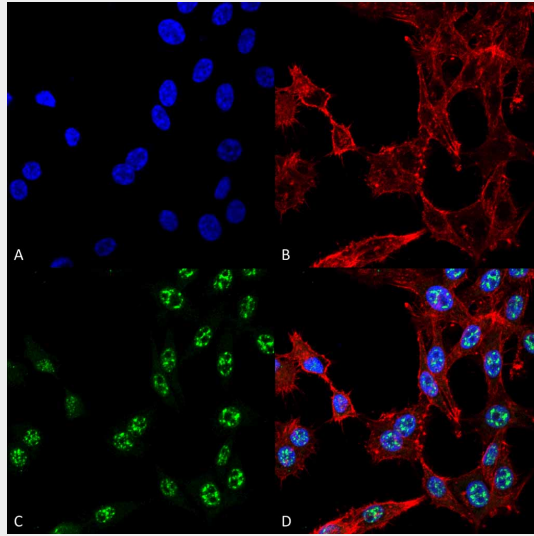
Nucleus | Cytoplasm | Cell Membrane | Peripheral Membrane Protein | Cytoplasmic Side

**ESR1 Antibody - Protocols**

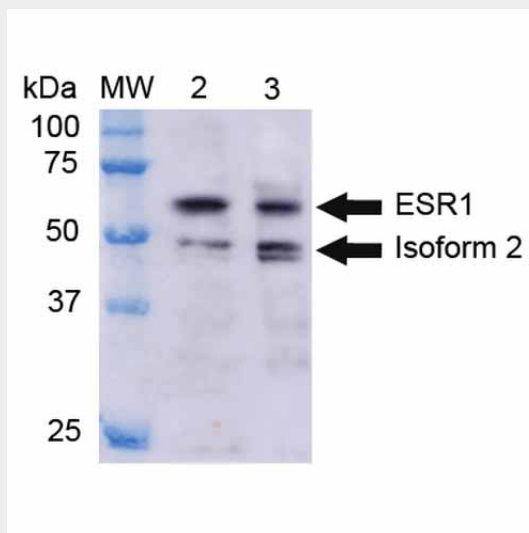
Provided below are standard protocols that you may find useful for product applications.

- [Western Blot](#)
- [Blocking Peptides](#)
- [Dot Blot](#)
- [Immunohistochemistry](#)
- [Immunofluorescence](#)
- [Immunoprecipitation](#)
- [Flow Cytometry](#)
- [Cell Culture](#)

### ESR1 Antibody - Images



Immunocytochemistry/Immunofluorescence analysis using Rabbit Anti-ESR1 Polyclonal Antibody (ASM10562). Tissue: Colon carcinoma cell line (RKO). Species: Human. Fixation: 4% Formaldehyde for 15 min at RT. Primary Antibody: Rabbit Anti-ESR1 Polyclonal Antibody (ASM10562) at 1:100 for 60 min at RT. Secondary Antibody: Goat Anti-Rabbit ATTO 488 at 1:100 for 60 min at RT. Counterstain: Phalloidin Texas Red F-Actin stain; DAPI (blue) nuclear stain at 1:1000, 1:5000 for 60 min at RT, 5 min at RT. Localization: Nucleus, Cytoplasm. Magnification: 60X. (A) DAPI nuclear stain. (B) Phalloidin Texas Red F-Actin stain. (C) ESR1 Antibody. (D) Composite.



Western blot analysis of Human HeLa and 293Trap cell lysates showing detection of ~66.2 kDa ESR1 protein using Rabbit Anti-ESR1 Polyclonal Antibody (ASM10562). Lane 1: Molecular Weight

Ladder (MW). Lane 2: HeLa cell lysates. Lane 3: 293Trap cell lysates. Load: 15  $\mu$ g. Block: 5% Skim Milk in 1X TBST. Primary Antibody: Rabbit Anti-ESR1 Polyclonal Antibody (ASM10562) at 1:1000 for 2 hours at RT. Secondary Antibody: Goat Anti-Rabbit IgG: HRP at 1:1000 for 60 min at RT. Color Development: ECL solution for 6 min in RT. Predicted/Observed Size: ~66.2 kDa. Other Band(s): 50 kDa is isoform 2.