

A11868

Leader in Biomolecular Solutions for Life Science



## RB Mouse mAb

Catalog No.: A11868

### Basic Information

---

#### Observed MW

106kDa

#### Calculated MW

106kDa

#### Category

SMab Recombinant Monoclonal  
Antibody

#### Applications

WB,IHC-P,IF/ICC,IP,ChIP,FC,ELISA

#### Cross-Reactivity

Human,Monkey,Bovine,Pig

### Background

---

The protein encoded by this gene is a negative regulator of the cell cycle and was the first tumor suppressor gene found. The encoded protein also stabilizes constitutive heterochromatin to maintain the overall chromatin structure. The active, hypophosphorylated form of the protein binds transcription factor E2F1. Defects in this gene are a cause of childhood cancer retinoblastoma (RB), bladder cancer, and osteogenic sarcoma.

### Recommended Dilutions

---

WB 1:500 - 1:2000

IHC-P 1:50 - 1:100

IF/ICC 1:50 - 1:100

IP 1:20 - 1:50

FC 1:20 - 1:50

ELISA Recommended starting concentration is 1 µg/mL. Please optimize the concentration based on your specific assay requirements.

ChIP 1:20 - 1:100

### Contact

---



[www.abclonal.com](http://www.abclonal.com)

### Immunogen Information

---

#### Gene ID

5925

#### Swiss Prot

P06400

#### Immunogen

Recombinant protein of human RB

#### Synonyms

RB; pRb; OSRC; pp110; p105-Rb; PPP1R130; p110-RB1

### Product Information

---

#### Source

Mouse

#### Isotype

IgG

#### Purification

Affinity purification

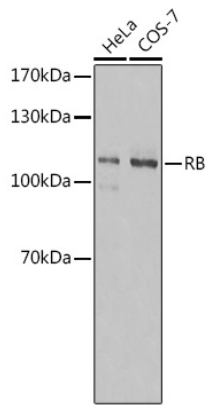
#### Storage

Store at -20°C. Avoid freeze / thaw cycles.

Buffer: PBS with 0.02% sodium azide,50% glycerol,pH7.3.

## Validation Data

---



Western blot analysis of various lysates using RB Mouse mAb (A11868).

Secondary antibody: HRP-conjugated Goat anti-Mouse IgG (H+L) (AS003) at 1:10000 dilution.

Lysates/proteins: 25µg per lane.

Blocking buffer: 3% nonfat dry milk in TBST.