

Beclin 2 Antibody
Catalog # ASM10491**Specification**

Beclin 2 Antibody - Product Information

Application	WB
Primary Accession	A8MW95
Other Accession	NP_001277622.1
Host	Rabbit
Reactivity	Human
Clonality	Polyclonal

Description

Rabbit Anti-Human Beclin 2 Polyclonal

Target/Specificity

Predicted molecular weight at ~48.1kDa. Observed bands in the 50-55kDa range, varied by lysates.

Other Names

BECN2 Antibody, Beclin-2 Antibody, Beclin-1 like protein 1 Antibody

Immunogen

Synthetic peptide from the mid-protein of human Beclin 2

Purification

Peptide Affinity Purified

Storage **-20°C****Storage Buffer**

PBS, 50% glycerol, 0.09% sodium azide

Shipping Temperature **Blue Ice or 4°C****Certificate of Analysis**

A 1:1000 dilution of SPC-602 was sufficient for detection of Beclin2 on rat liver lysates using Goat anti-rabbit IgG:HRP as the secondary antibody.

Cellular Localization

Cytoplasm

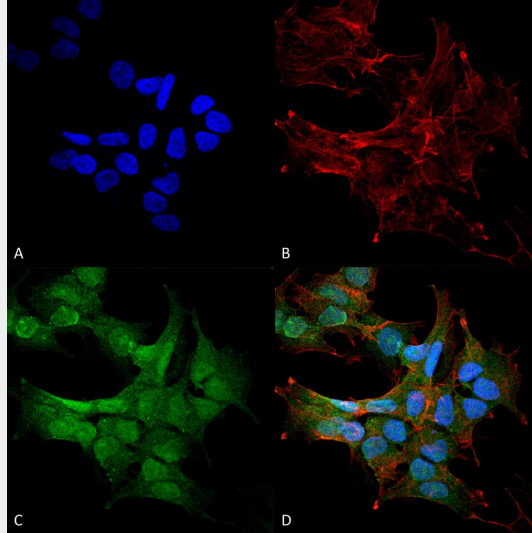
Beclin 2 Antibody - Protocols

Provided below are standard protocols that you may find useful for product applications.

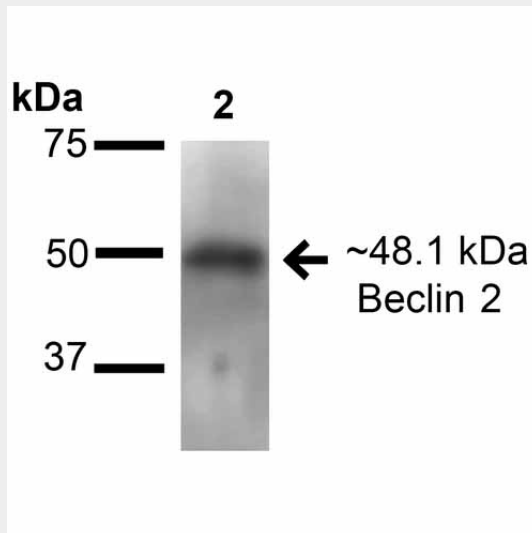
- [Western Blot](#)
- [Blocking Peptides](#)
- [Dot Blot](#)
- [Immunohistochemistry](#)
- [Immunofluorescence](#)
- [Immunoprecipitation](#)

- [Flow Cytometry](#)
- [Cell Culture](#)

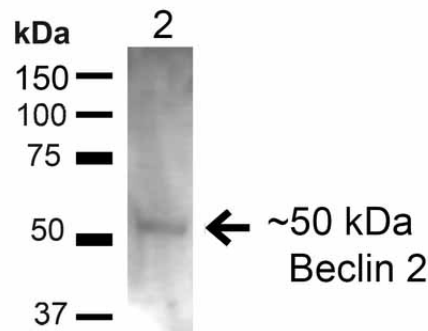
Beclin 2 Antibody - Images



Immunocytochemistry/Immunofluorescence analysis using Rabbit Anti-Beclin 2 Polyclonal Antibody (ASM10491). Tissue: Neuroblastoma cell line (SK-N-BE). Species: Human. Fixation: 4% Formaldehyde for 15 min at RT. Primary Antibody: Rabbit Anti-Beclin 2 Polyclonal Antibody (ASM10491) at 1:100 for 60 min at RT. Secondary Antibody: Goat Anti-Mouse ATTO 488 at 1:200 for 60 min at RT. Counterstain: Phalloidin Texas Red F-Actin stain; DAPI (blue) nuclear stain at 1:1000, 1:5000 for 60 min at RT, 5 min at RT. Localization: Cytoplasm. Magnification: 60X. (A) DAPI (blue) nuclear stain (B) Phalloidin Texas Red F-Actin stain (C) Beclin 2 Antibody (D) Composite.



Western blot analysis of Human 293Trap cell lysates showing detection of ~48.1 kDa Beclin2 protein using Rabbit Anti-Beclin2 Polyclonal Antibody (ASM10491). Lane 1: Molecular Weight Ladder (MW). Lane 2: Human 293Trap cell lysates. Load: 15 µg. Block: 5% Skim Milk in 1X TBST. Primary Antibody: Rabbit Anti-Beclin2 Polyclonal Antibody (ASM10491) at 1:1000 for 16 hours at 4°C. Secondary Antibody: Goat Anti-Rabbit IgG: HRP at 1:2000 for 60 min at RT. Color Development: ECL solution for 5 min at RT. Predicted/Observed Size: ~48.1 kDa.



Western blot analysis of Rat Liver showing detection of ~48kDa Beclin-2 protein using Rabbit Anti-Beclin-2 Polyclonal Antibody (ASM10491). Lane 1: MW Ladder. Lane 2: Rat Liver (20 μ g). Load: 20 μ g. Block: 5% Skim Milk for 1 hour at RT. Primary Antibody: Rabbit Anti-Beclin-2 Polyclonal Antibody (ASM10491) at 1:200 for 1 hour at RT. Secondary Antibody: Goat Anti-Rabbit IgG: HRP at 1:2000 for 1 hour at RT. Color Development: ECL solution for 6 min at RT. Predicted/Observed Size: ~48kDa.

Beclin 2 Antibody - Background

Beclin 2 is a novel coiled-coil protein related to the autophagic Beclin 1 protein. It is thought to interact with Bcl-2, an anti-apoptotic protein, and is believed to function in autophagy. It has also been found to mediate G protein-coupled receptor (GPCR) degradation (1).

Beclin 2 Antibody - References

1. He C., et al. (2013) Cell. 154(5): 1085-1099.