

SNAT1 Antibody
SNAT1 Antibody, Clone S104-32
Catalog # ASM10235**Specification**

SNAT1 Antibody - Product Information

Application	WB
Primary Accession	O9JM15
Other Accession	NP_620187.1
Host	Mouse
Isotype	IgG1
Reactivity	Human, Mouse, Rat
Clonality	Monoclonal

Description

Mouse Anti-Rat SNAT1 Monoclonal IgG1

Target/Specificity

Detects ~50kDa.

Other Names

SLC38A1 Antibody, amino acids transporter A1 Antibody, ATA1 Antibody, NAT2 Antibody, sodium coupled neutral amino acids transporter 1 Antibody, Amino acid transporter system A1 Antibody, N-system amino acid transporter 2 Antibody, S38A1 Antibody, SAT1 Antibody, SNAT 1 Antibody, Solute carrier family 38 member 1 Antibody, System A amino acid transporter 1 Antibody, System N amino acid transporter 1 Antibody

Immunogen

Fusion protein amino acids 1- 63 of rat SNAT1

Purification

Protein G Purified

Storage **-20°C****Storage Buffer**

PBS pH7.4, 50% glycerol, 0.09% sodium azide

Shipping Temperature **Blue Ice or 4°C****Certificate of Analysis**

1 µg/ml of SMC-401 was sufficient for detection of SNAT1 in 20 µg of lysates from neocortical neurons cultured under amino acid starvation conditions and assayed by colorimetric immunoblot analysis using goat anti-mouse IgG:HRP as the secondary antibody.

Cellular Localization

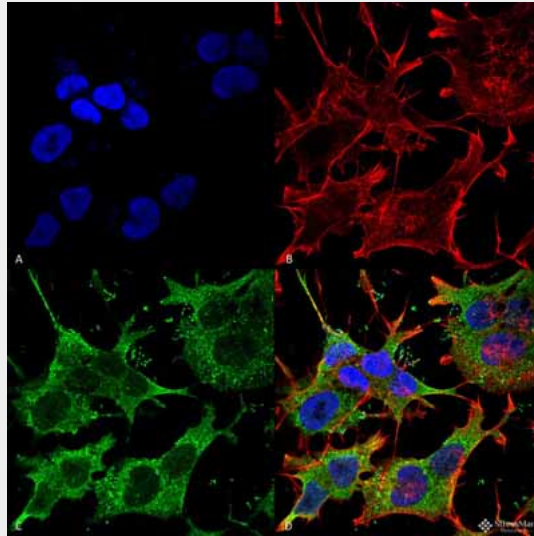
Cell Membrane

SNAT1 Antibody - Protocols

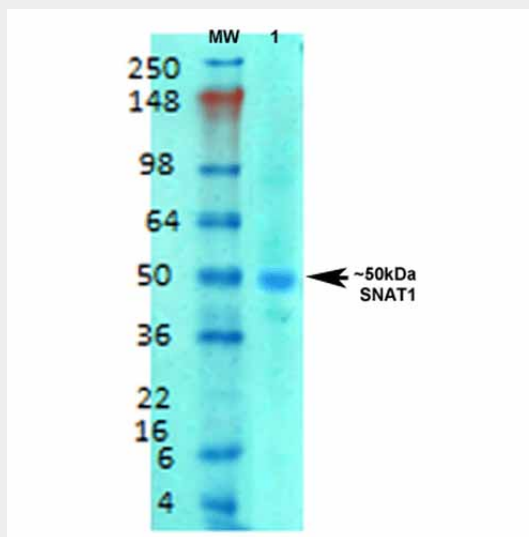
Provided below are standard protocols that you may find useful for product applications.

- [Western Blot](#)
- [Blocking Peptides](#)
- [Dot Blot](#)
- [Immunohistochemistry](#)
- [Immunofluorescence](#)
- [Immunoprecipitation](#)
- [Flow Cytometry](#)
- [Cell Culture](#)

SNAT1 Antibody - Images



Immunocytochemistry/Immunofluorescence analysis using Mouse Anti-SNAT1 Monoclonal Antibody, Clone S104-32 (ASM10235). Tissue: Neuroblastoma cell line (SK-N-BE). Species: Human. Fixation: 4% Formaldehyde for 15 min at RT. Primary Antibody: Mouse Anti-SNAT1 Monoclonal Antibody (ASM10235) at 1:100 for 60 min at RT. Secondary Antibody: Goat Anti-Mouse ATTO 488 at 1:100 for 60 min at RT. Counterstain: Phalloidin Texas Red F-Actin stain; DAPI (blue) nuclear stain at 1:1000, 1:5000 for 60min RT, 5min RT. Localization: Cell Membrane. Magnification: 60X. (A) DAPI (blue) nuclear stain (B) Phalloidin Texas Red F-Actin stain (C) SNAT1 Antibody (D) Composite.



Western Blot analysis of Rat brain membrane lysate showing detection of SLC38A1 protein using

Mouse Anti-SLC38A1 Monoclonal Antibody, Clone S104-32 (ASM10235). Primary Antibody: Mouse Anti-SLC38A1 Monoclonal Antibody (ASM10235) at 1:1000.

SNAT1 Antibody - Background

The sodium-coupled neutral amino acid transporters (SNAT) of the SLC38 gene family include System A subtypes SNAT1, SNAT2 and SNAT4 and System N subtypes SNAT3 and SNAT5. The SLC38 transporters are essential for the uptake of nutrients, energy production, metabolism, detoxification, and the cycling of neurotransmitters. The SNAT1 protein, also designated ATA1 or NAT2 is encoded by the human gene SLC38A1 which maps to chromosome 12q13.11. SNAT1 is responsible for the transport of glutamine, an intermediate in the synthesis of urea, and may be involved in the generation of glutamate in the retina. SNAT1 protein may be detected in some tissues such as heart, brain and placenta and expression levels are enriched in certain neuronal populations within the CNS. SNAT1 is not present in astrocytes.

SNAT1 Antibody - References

1. Hatanaka T., et al. (2000) *Biochim. Biophys. Acta* 1467: 1-6.
2. Wang H., et al. (2000) *Biochem. Biophys. Res. Commun.* 273: 1175-1179.
3. Gu S., et al. (2001) *J. Biol. Chem.* 276: 24137-24144.
4. Freeman T.L., et al. (2002) *Arch. Biochem. Biophys.* 400: 215-222.
5. Pali S.S., et al. (2004) *J. Biol. Chem.* 279: 3463-3471.
6. Sidoryk M., et al. (2004) *Neuroreport*. 15: 575-578. Erratum in: 2004. *Neuroreport*. 15: 533.
7. Desforges, M., et al. (2006) *Am. J. Physiol. Cell. Physiol.* 290: 305-312.