

A21904

Leader in Biomolecular Solutions for Life Science



CD47 Rabbit mAb

Catalog No.: A21904

Recombinant

1 Publications

Basic Information

Observed MW

45-50kDa

Calculated MW

35kDa

Category

SMab Recombinant Monoclonal Antibody

Applications

WB,FC,ELISA

Cross-Reactivity

Human,Mouse,Rat

CloneNo number

ARC51804

Recommended Dilutions

WB 1:1000 - 1:4000

FC 1:50-1:200

ELISA Recommended starting concentration is 1 µg/mL. Please optimize the concentration based on your specific assay requirements.

Contact

 www.abclonal.com

Background

This gene encodes a membrane protein, which is involved in the increase in intracellular calcium concentration that occurs upon cell adhesion to extracellular matrix. The encoded protein is also a receptor for the C-terminal cell binding domain of thrombospondin, and it may play a role in membrane transport and signal transduction. This gene has broad tissue distribution, and is reduced in expression on Rh erythrocytes. Alternatively spliced transcript variants have been found for this gene.

Immunogen Information

Gene ID

961

Swiss Prot

Q08722

Immunogen

A synthetic peptide corresponding to a sequence within amino acids 224-323 of human CD47 (NP_001768.1).

Synonyms

IAP; OA3; MER6; CD47

Product Information

Source

Rabbit

Isotype

IgG

Purification

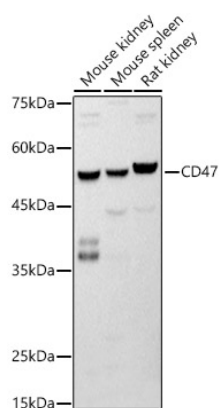
Affinity purification

Storage

Store at -20°C. Avoid freeze / thaw cycles.

Buffer: PBS with 0.05% proclin300,0.05% BSA,50% glycerol,pH7.3.

Validation Data



Western blot analysis of various lysates using CD47 Rabbit mAb (A21904) at 1:1000 dilution.

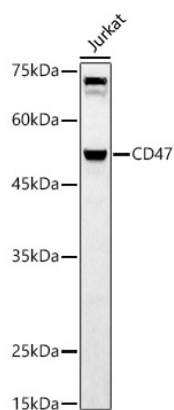
Secondary antibody: HRP-conjugated Goat anti-Rabbit IgG (H+L) (AS014) at 1:10000 dilution.

Lysates/proteins: 25µg per lane.

Blocking buffer: 3% nonfat dry milk in TBST.

Detection: ECL Basic Kit (RM00020).

Exposure time: 1s.



Western blot analysis of lysates from Jurkat cells, using CD47 Rabbit mAb (A21904) at 1:1000 dilution.

Secondary antibody: HRP-conjugated Goat anti-Rabbit IgG (H+L) (AS014) at 1:10000 dilution.

Lysates/proteins: 25µg per lane.

Blocking buffer: 3% nonfat dry milk in TBST.

Detection: ECL Basic Kit (RM00020).

Exposure time: 30s.