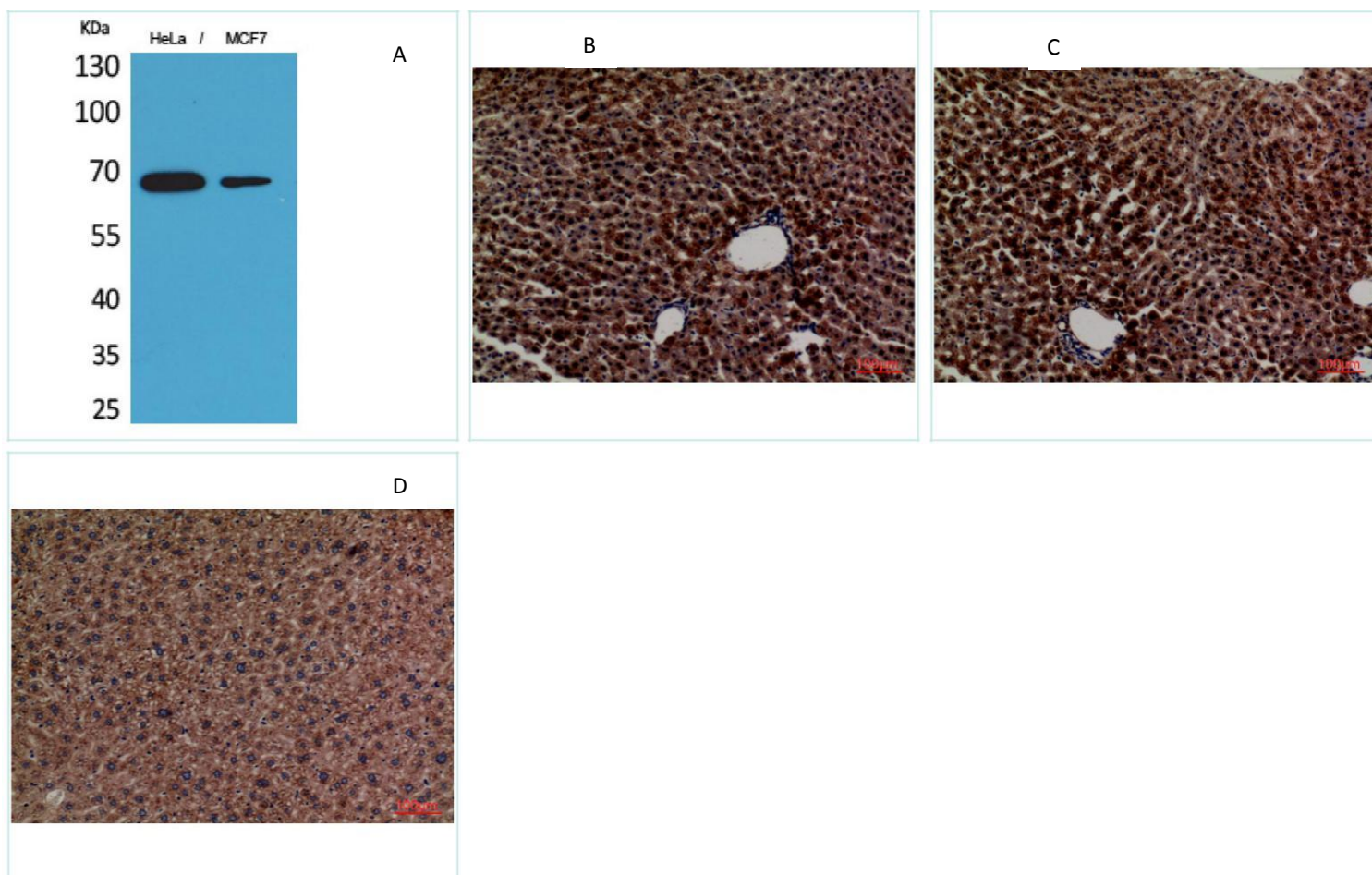


Anti-PEPCK-C antibody

Cat # NB-22-6599



A- Western Blot (WB) analysis of HeLa, MCF7 cells using PEPCK-C Polyclonal Antibody.

B- Immunohistochemistry (IHC) analysis of paraffin-embedded Rat liver, antibody was diluted at 1:100.

C- Immunohistochemistry (IHC) analysis of paraffin-embedded Rat Liver, antibody was diluted at 1:100.

D- Immunohistochemistry (IHC) analysis of paraffin-embedded Mouse Liver, antibody was diluted at 1:100.

Description

Rabbit Polyclonal to PEPCK-C.

Product Information

Host	Rabbit
Reactivity	Human, Mouse, Rat
Applications	WB, IHC-P, ELISA
Immunogen	Synthesized peptide derived from the Internal region of human PEPCK-C.
Gene ID	5105 (Human); 18534 (Mouse); 362282 (Rat)
Dilution range	WB 1:500-1:2000; IHC-P 1:100-300; ELISA 1:20000;
Specificity	PEPCK-C Polyclonal Antibody detects endogenous levels of PEPCK-C protein.
Purification	The antibody was affinity-purified from rabbit antiserum by affinity-chromatography using epitope-specific immunogen.
Note	For research use only.
Protein Name	Phosphoenolpyruvate carboxykinase cytosolic [GTP]
Clonality	Polyclonal
Conjugation	Unconjugated
Isotype	IgG
Formulation	Liquid in PBS containing 50% glycerol, 0.5% BSA and 0.02% sodium azide.
Molecular Weight	65 kDa
Concentration	1 mg/ml
Storage Instruction	Store at -20°C. Avoid repeated freeze/thaw cycles.

Target

Database Links	Human UniProt/Swiss-Prot: P35558 ; Mouse UniPort/Swiss-Prot: Q9Z2V4 ; Rat UniProt/Swiss-Port: P07379 ; Human Entrez Gene: 5105 ; Mouse Entrez Gene: 18534 ; Rat Entrez Gene: Rn.104376
-----------------------	---

Alternative names

PCK1 / phosphoenolpyruvate carboxykinase 1 / A306_08473 antibody, Anapl_00271 antibody, AS27_03208 antibody, AS28_06982 antibody, CB1_000875023 antibody, cytosolic phosphoenolpyruvate carboxykinase antibody, cytosolic phosphoenolpyruvate carboxykinase 1 antibody, D623_10013741 antibody, EGK_02261 antibody, fj93h11 antibody, gluconeogenic enzyme antibody, GTP antibody, GW7_10218 antibody, H920_07263 antibody, hypothetical protein antibody, M91_17519 antibody, M959_06532 antibody, MDA_GLEAN10009901 antibody, N300_15742 antibody, N301_06275 antibody, N302_00395 antibody, N303_11128 antibody, N305_13221 antibody, N306_01701 antibody, N307_09862 antibody, N310_12960 antibody, N312_02734 antibody, N320_02358 antibody, N321_04260 antibody, N322_10234 antibody, N324_12931 antibody, N325_03467 antibody, N326_04065 antibody, N327_12581 antibody, N328_04693 antibody, N329_03234 antibody, N330_10630 antibody, N332_00703 antibody, N333_09593 antibody, N334_03588 antibody, N335_07434 antibody, N336_12359 antibody, N339_01697 antibody, N340_00364 antibody, N341_10034 antibody, PAL_GLEAN10024551 antibody, PANDA_003587 antibody, PCK antibody, Pck-1 antibody, PEP carboxykinase antibody, Pepck antibody, pepck1 antibody, pepck-c antibody, PEPCKC antibody, phosphoenolpyruvate carboxykinase 1, cytosolic antibody, phosphoenolpyruvate carboxykinase 1 (soluble) antibody, phosphoenolpyruvate carboxykinase 1 variant 1 antibody, phosphoenolpyruvate carboxykinase 1 variant 2 antibody, phosphoenolpyruvate carboxykinase 1 variant 3 antibody, phosphoenolpyruvate carboxykinase 1 variant 4 antibody, phosphoenolpyruvate carboxykinase 1 variant 5 antibody, phosphoenolpyruvate carboxykinase, cytosolic antibody, phosphoenolpyruvate carboxykinase, cytosolic (GTP) antibody, phosphoenolpyruvate carboxykinase, cytosolic [GTP]-like protein antibody, phosphoenolpyruvate carboxykinase (GTP) antibody, phosphoenolpyruvate carboxylase antibody, phosphopyruvate carboxylase antibody, PPCK1 antibody, ppckc antibody, RATPEPCK antibody, TREES_T100015618 antibody, UY3_07035 antibody, Y1Q_029240 antibody, Y956_12867 antibody, Z169_03688 antibody

For reference only

For Research Use Only. Not for Diagnostic or Therapeutic Use.