

**GABARAPL1 Antibody**  
Catalog # ASM10505**Specification****GABARAPL1 Antibody - Product Information**

Application	<b>WB</b>
Primary Accession	<a href="#">O9HOR8</a>
Other Accession	<a href="#">NP_113600.1</a>
Host	<b>Rabbit</b>
Reactivity	<b>Human, Mouse</b>
Clonality	<b>Polyclonal</b>

**Description**

Rabbit Anti-Human GABARAPL1 Polyclonal

**Target/Specificity**

Detects ~18 kDa.

**Other Names**

APG8 like Antibody, GEC-1 Antibody, ATG8 Antibody, Glandular epithelial cell protein 1 Antibody, ATG8B Antibody, GEC1 Antibody, GBRL1\_HUMAN Antibody, Gamma-aminobutyric acid receptor-associated protein-like 1 Antibody, GABARAPL1 a Antibody, ATG8L Antibody, APG8L Antibody, GABA(A) receptor-associated protein-like 1 Antibody, Early estrogen regulated protein Antibody, Early estrogen-regulated protein Antibody, GABA(A) receptor associated protein like 1 Antibody, Gamma aminobutyric acid receptor associated protein like 1 Antibody, GEC 1 Antibody, GABARAPL1 Antibody, GABA Antibody,

**Immunogen**

Synthetic peptide from the N-terminal of Human GABARAPL1 (aa. 5-16)

**Purification**

Peptide Affinity Purified

Storage **-20°C****Storage Buffer**

PBS, 50% glycerol, 0.09% sodium azide

Shipping Temperature **Blue Ice or 4°C****Certificate of Analysis**

A 1:1000 dilution of SPC-622 was sufficient for detection of GABARAPL1 in 15 µg of Human HeLa Cell Lysates by ECL immunoblot analysis using goat anti-rabbit IgG:HRP as the secondary antibody.

**Cellular Localization**

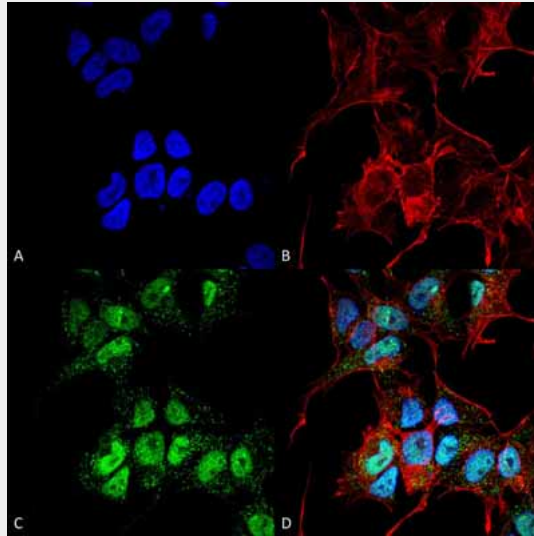
Cytoplasm | Cytoskeleton | Cytoplasmic Vesicle Membrane | Lipid-Anchor | Endoplasmic Reticulum | Golgi Apparatus | Cytoplasmic Vesicle | Autophagosome

**GABARAPL1 Antibody - Protocols**

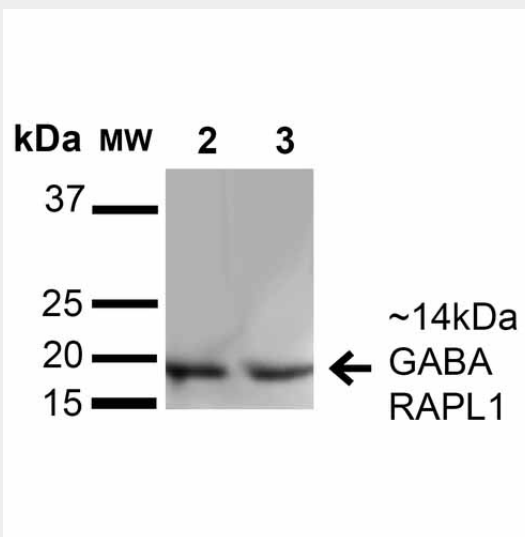
Provided below are standard protocols that you may find useful for product applications.

- [Western Blot](#)
- [Blocking Peptides](#)
- [Dot Blot](#)
- [Immunohistochemistry](#)
- [Immunofluorescence](#)
- [Immunoprecipitation](#)
- [Flow Cytometry](#)
- [Cell Culture](#)

### GABARAPL1 Antibody - Images



Immunocytochemistry/Immunofluorescence analysis using Rabbit Anti-GABARAPL1 Polyclonal Antibody (ASM10505). Tissue: Neuroblastoma cell line (SK-N-BE). Species: Human. Fixation: 4% Formaldehyde for 15 min at RT. Primary Antibody: Rabbit Anti-GABARAPL1 Polyclonal Antibody (ASM10505) at 1:100 for 60 min at RT. Secondary Antibody: Goat Anti-Mouse ATTO 488 at 1:200 for 60 min at RT. Counterstain: Phalloidin Texas Red F-Actin stain; DAPI (blue) nuclear stain at 1:1000, 1:5000 for 60 min at RT, 5 min at RT. Localization: Cytoplasmic Vesicle, Autophagosome, Cytoplasm, Nucleus. Magnification: 60X. (A) DAPI (blue) nuclear stain (B) Phalloidin Texas Red F-Actin stain (C) GABARAPL1 Antibody (D) Composite.



Western blot analysis of Human HeLa and 293Trap cell lysates showing detection of 14 kDa

GABARAPL1 protein using Rabbit Anti-GABARAPL1 Polyclonal Antibody (ASM10505). Lane 1: Molecular Weight Ladder (MW). Lane 2: Human HeLa and 293Trap cell lysates. Load: 15  $\mu$ g . Block: 5% Skim Milk in 1X TBST. Primary Antibody: Rabbit Anti-GABARAPL1 Polyclonal Antibody (ASM10505) at 1:1000 for 1 hour at RT. Secondary Antibody: Goat Anti-Rabbit HRP at 1:2000 for 60 min at RT. Color Development: ECL solution for 6 min in RT. Predicted/Observed Size: 14 kDa.