

RP10027LQ

Leader in Biomolecular Solutions for Life Science



# Recombinant Human SUMO-1 protein

Catalog No.: RP10027LQ **Recombinant**

## Sequence Information

Species	Gene ID	Swiss Prot
<i>E. coli</i>	7341	P63165

### Tags

His Tag

### Synonyms

DAP1;GMP1;OFC10;PIC1;SENP2;SMT3;  
SMT3C;SMT3H3;UBL1;SUMO1;SUMO-1  
; DAP1; GMP1; OFC10; PIC1; SENP2;  
SMT3; SMT3C; SMT3H3; UBL1; small  
ubiquitin-like modifier 1

## Product Information

Source	Purification
<i>E. coli</i>	~95% by SDS- PAGE

### Endotoxin

### Formulation

20 mM Tris, 150 mM NaCl, 2 mM βME,  
10% Glycerol

### Reconstitution

## Background

SUMO (small Ub-related modifier) is a Ub-like protein. Three types of SUMO are most commonly studied, SUMO 1, SUMO 2, and SUMO 3. SUMO 2 and SUMO 3 are almost identical isoforms and thus share many functions. Like Ub, SUMO can be conjugated to its target proteins as a polymeric chain. However, SUMO 1 forms chains inefficiently as compared to SUMO 2 and SUMO 3. SUMO is conjugated to target proteins by the E1 (SAE1/SAE2), E2 (Ube2I or Ubc9), E3 (RanBP2/Nup358, amongst others). Protein sumoylation is involved in many cellular processes including gene transcription.

## Basic Information

### Description

### Bio-Activity

### Storage

Store at -70°C. This product is stable at ≤ -70°C for up to 1 year from the date of receipt. For optimal storage, aliquot into smaller quantities after centrifugation and store at recommended temperature. Avoid repeated freeze-thaw cycles. Avoid repeated freeze/thaw cycles.

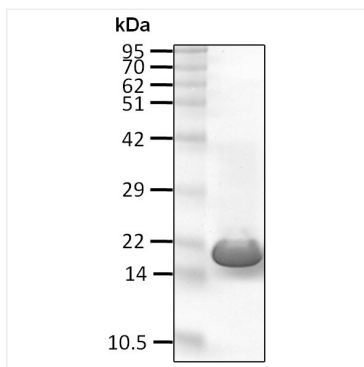
## Contact



[www.abclonal.com](http://www.abclonal.com)

## Validation Data

---



Recombinant human SUMO-1 protein was determined by SDS-PAGE with Coomassie Blue.