

Anti-EPO antibody

Cat# NB-22-22194-50

Cat# NB-22-22194-200

GENERAL INFORMATION

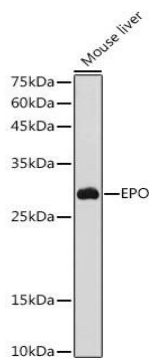
| | |
|--------------------------|--|
| Product Type | Primary antibodies |
| Short Description | Rabbit polyclonal antibody anti-EPO is suitable for use in Western Blot and Immunohistochemistry |
| Applications | WB, IHC |
| Host/Source | Rabbit |
| Reactivity | Human, Mouse, Rat |

PRODUCT PROPERTIES

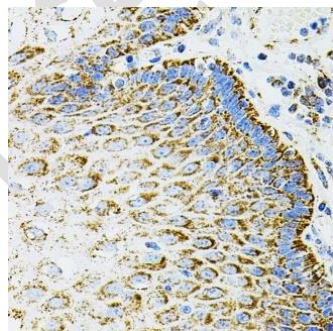
| | |
|----------------------------|--|
| Clonality | Polyclonal |
| Clone ID | |
| Concentration | |
| Conjugation | Unconjugated |
| Purification | Affinity purification |
| Dilution Range | WB 1:500-1:2000 IHC 1:100-1:200 |
| Formulation | PBS containing 0.02% Sodium Azide, 50% Glycerol, pH7.3 |
| Isotype | IgG |
| Storage Instruction | Store in a freezer at -20°C and avoid freeze-thaw cycles |

TARGET INFORMATION

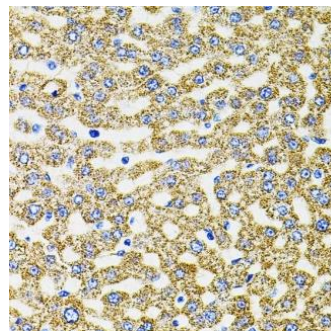
| | |
|---------------------------|----------------------------------|
| Gene ID | 2056 |
| Gene Symbol | EPO |
| Uniprot ID | EPO_HUMAN |
| Immunogen | A synthetic peptide of human EPO |
| Immunogen Region | |
| Specificity | |
| Immunogen sequence | |



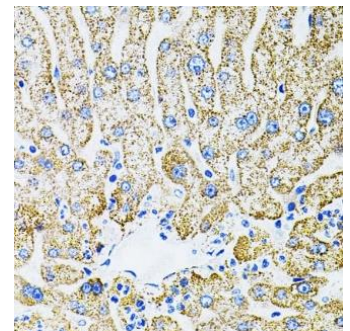
Western blot analysis of extracts of mouse liver, using EPO antibody (NB-22-22194) at 1:1000 dilution. Secondary antibody: HRP Goat Anti-rabbit IgG (H+L) at 1:10000 dilution. Lysates/proteins: 25ug per lane. Blocking buffer: 3% nonfat dry milk in TBST. Detection: ECL Basic Kit. Exposure time: 1s.



Immunohistochemistry of paraffin-embedded human esophagus using EPO antibody (NB-22-22194) (40x lens).



Immunohistochemistry of paraffin-embedded rat liver using EPO antibody (NB-22-22194) (40x lens).



Immunohistochemistry of paraffin-embedded human liver damage using EPO antibody (NB-22-22194) (40x lens).

This product is suitable for in-vitro studies under the RESEARCH USE ONLY [RUO] licence. This product must not be used as for diagnostic other medical purposes.