

Slo3 Antibody
Slo3 Antibody, Clone S2-16
Catalog # ASM10202**Specification**

Slo3 Antibody - Product Information

| | |
|-------------------|-----------------------------|
| Application | WB, IHC |
| Primary Accession | O54982 |
| Other Accession | NP_032458.3 |
| Host | Mouse |
| Isotype | IgG2b |
| Reactivity | Human, Mouse, Rat |
| Clonality | Monoclonal |
| Format | APC |

Description

Mouse Anti-Mouse Slo3 Monoclonal IgG2b

Target/Specificity

Detects ~115kDa.

Other Names

Kcna3 Antibody, mSlo3 Antibody, Slo3 Antibody, KCa5 Antibody, KCNMA3 Antibody, potassium channel subfamily U member 1 Antibody, Slowpoke homolog 3 Antibody, KCa5.1 Antibody, KCNMC1Calcium-activated potassium channel Antibody, subfamily M subunit alpha-3 Antibody, Calcium-activated potassium channel subunit alpha-3 Antibody, potassium channel Antibody, subfamily U Antibody, member 1 Antibody

Immunogen

Fusion protein amino acids 1052-1121 of mouse Slo3

Purification

Protein G Purified

Storage **-20°C****Storage Buffer**

PBS pH7.4, 50% glycerol, 0.09% sodium azide

Shipping Temperature **Blue Ice or 4°C****Certificate of Analysis**

1 µg/ml of SMC-326 was sufficient for detection of Slo3 in 10 µg of mouse brain lysate by colorimetric immunoblot analysis using Goat anti-mouse IgG:HRP as the secondary antibody.

Cellular Localization

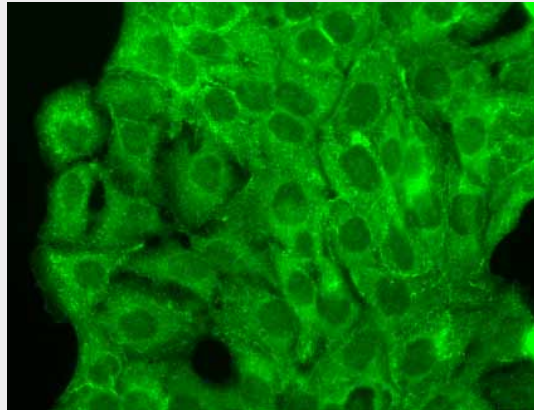
Cell Membrane

Slo3 Antibody - Protocols

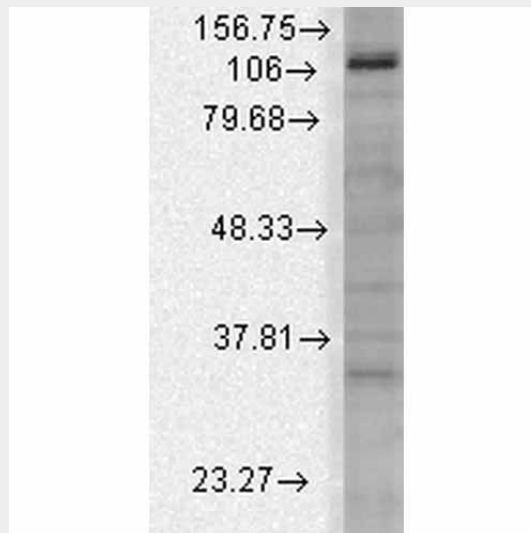
Provided below are standard protocols that you may find useful for product applications.

- [Western Blot](#)
- [Blocking Peptides](#)
- [Dot Blot](#)
- [Immunohistochemistry](#)
- [Immunofluorescence](#)
- [Immunoprecipitation](#)
- [Flow Cytometry](#)
- [Cell Culture](#)

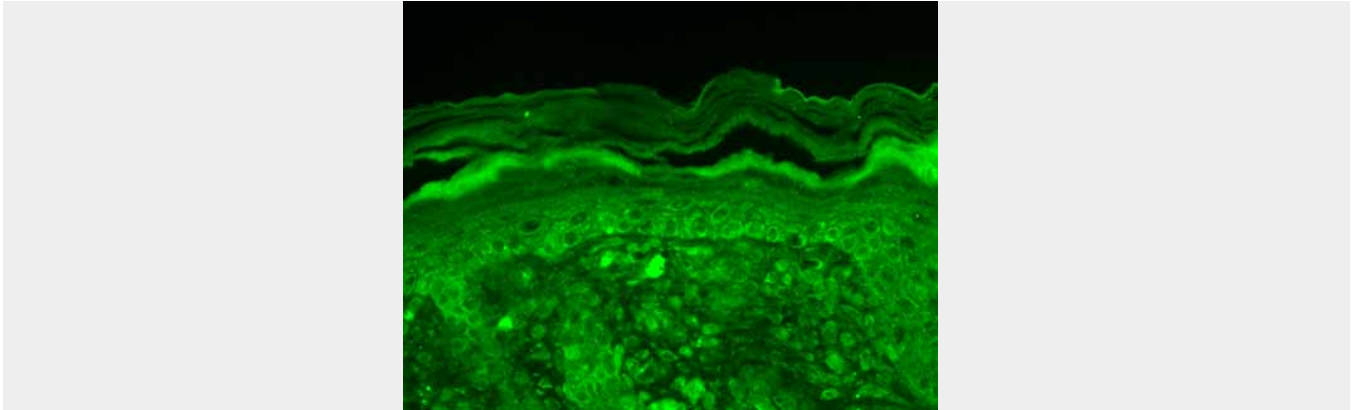
Slo3 Antibody - Images



Immunocytochemistry/Immunofluorescence analysis using Mouse Anti-Slo3 Potassium Channel Monoclonal Antibody, Clone S2-16 (ASM10202). Tissue: HaCaT cells. Species: Human. Fixation: Cold 100% methanol for 10 minutes at -20°C. Primary Antibody: Mouse Anti-Slo3 Potassium Channel Monoclonal Antibody (ASM10202) at 1:100 for 1 hour at RT. Secondary Antibody: FITC Goat Anti-Mouse (green) at 1:50 for 1 hour at RT. Localization: Cytoplasmic, and some cell-cell border staining.



Western Blot analysis of Rat brain membrane lysate showing detection of Slo3 Potassium Channel protein using Mouse Anti-Slo3 Potassium Channel Monoclonal Antibody, Clone S2-16 (ASM10202). Load: 15 µg. Block: 1.5% BSA for 30 minutes at RT. Primary Antibody: Mouse Anti-Slo3 Potassium Channel Monoclonal Antibody (ASM10202) at 1:1000 for 2 hours at RT. Secondary Antibody: Sheep Anti-Mouse IgG: HRP for 1 hour at RT.



Immunohistochemistry analysis using Mouse Anti-Slo3 Potassium Channel Monoclonal Antibody, Clone S2-16 (ASM10202). Tissue: backskin. Species: Mouse. Fixation: Bouin's Fixative and paraffin-embedded. Primary Antibody: Mouse Anti-Slo3 Potassium Channel Monoclonal Antibody (ASM10202) at 1:100 for 1 hour at RT. Secondary Antibody: FITC Goat Anti-Mouse (green) at 1:50 for 1 hour at RT. Localization: Epidermal Staining.

Slo3 Antibody - Background

The Slo3 channel is a novel potassium channel abundantly expressed in mammalian spermatocytes- tests have shown that it is expressed in both mouse and human testis (3). It represents a new and unique type of potassium channel that is regulated by both intracellular pH and membrane voltage (1). Because of its sensitivity to both pH and voltage, Slo3 may play a role in alkalization-mediated K(+) fluxes associated with sperm capacitation (2).

Slo3 Antibody - References

1. Schreiber M., et al. (1998) J Biol Chem. 273 (6): 3509-3516.
2. Tang Q.Y., Zhang Z., Xia X.M. and Lingle C.J. (2010) Epub: Channels (Austin) 4(1).