

A8725

Leader in Biomolecular Solutions for Life Science



p150 CAF1 Rabbit mAb

Catalog No.: A8725 **Recombinant**

Basic Information

Observed MW

150kDa

Calculated MW

107kDa

Category

SMab Recombinant Monoclonal
Antibody

Applications

WB,ELISA

Cross-Reactivity

Human

CloneNo number

ARC2011

Background

Chromatin assembly factor I (CAF1) is a nuclear complex consisting of p50, p60 (CHAF1B; MIM 601245), and p150 (CHAF1A) subunits that assembles histone octamers onto replicating DNA in vitro (Kaufman et al., 1995 [PubMed 7600578]).

Recommended Dilutions

WB 1:500 - 1:1000

Immunogen Information

Gene ID

10036

Swiss Prot

Q13111


Immunogen

A synthetic peptide corresponding to a sequence within amino acids 100-200 of human p150 CAF1 (NP_005474.2).

Synonyms

CAF1; P150; CAF-1; CAF1B; CAF1P150; p150 CAF1

Contact

 www.abclonal.com

Product Information

Source

Rabbit

Isotype

IgG

Purification

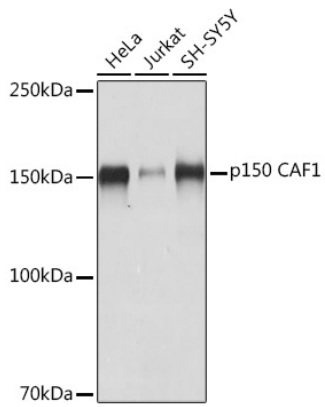
Affinity purification

Storage

Store at -20°C. Avoid freeze / thaw cycles.

Buffer: PBS with 0.02% sodium azide,0.05% BSA,50% glycerol,pH7.3.

Validation Data



Western blot analysis of extracts of various cell lines, using p150 CAF1 Rabbit mAb (A8725) at 1:1000 dilution.
Secondary antibody: HRP Goat Anti-Rabbit IgG (H+L) (AS014) at 1:10000 dilution.
Lysates/proteins: 25µg per lane.
Blocking buffer: 3% nonfat dry milk in TBST.
Detection: ECL Basic Kit (RM00020).
Exposure time: 3s.