

A24689

Leader in Biomolecular Solutions for Life Science



HSL/LIPE Rabbit mAb

Catalog No.: A24689 **Recombinant**

Basic Information

Observed MW

83kDa

Calculated MW

117kDa

Category

SMab Recombinant Monoclonal Antibody

Applications

WB,IF/ICC,ELISA

Cross-Reactivity

Human,Mouse

CloneNo number

ARC64016

Background

The protein encoded by this gene has a long and a short form, generated by use of alternative translational start codons. The long form is expressed in steroidogenic tissues such as testis, where it converts cholesteryl esters to free cholesterol for steroid hormone production. The short form is expressed in adipose tissue, among others, where it hydrolyzes stored triglycerides to free fatty acids.

Recommended Dilutions

WB 1:2000 - 1:9000

IF/ICC 1:50 - 1:200

Immunogen Information

Gene ID

3991

Swiss Prot

Q05469

Immunogen

A synthetic peptide corresponding to a sequence within amino acids 901-1000 of human HSL/LIPE (NP_005348.2).

Synonyms

HSL; LHS; REH; AOMS4; FPLD6; HSL/LIPE

Contact



www.abclonal.com

Product Information

Source

Rabbit

Isotype

IgG

Purification

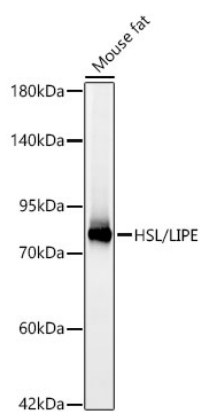
Affinity purification

Storage

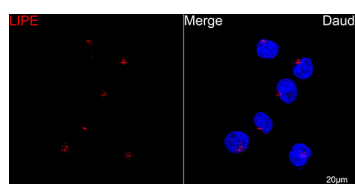
Store at -20°C. Avoid freeze / thaw cycles.

Buffer: PBS with 0.05% proclin300,0.05% BSA,50% glycerol,pH7.3.

Validation Data



Western blot analysis of lysates from Mouse fat, using HSL/LIPE Rabbit mAb (A24689) at 1:8000 dilution.
Secondary antibody: HRP Goat Anti-Rabbit IgG (H+L) (AS014) at 1:10000 dilution.
Lysates/proteins: 25ug per lane.
Blocking buffer: 3% nonfat dry milk in TBST.
Detection: ECL Basic Kit (RM00020).
Exposure time: 10s.



Confocal imaging of Daudi cells using HSL/LIPE Rabbit mAb (A24689), at dilution of 1:200 (Red). DAPI was used for nuclear staining (blue). Objective: 100x.