

A24273

Leader in Biomolecular Solutions for Life Science



ABflo® 594 Rabbit anti-Human CD369/Dectin-1 mAb

Catalog No.: A24273

Basic Information

Observed MW

Calculated MW

5kDa/8kDa/13-27kDa

Category

SMab Recombinant Monoclonal Antibody

Applications

FC

Cross-Reactivity

Human

CloneNo number

ARC61646-ABflo594

Conjugate

ABflo® 594. Ex:588nm. Em:604nm.

Recommended Dilutions

FC 5 µl per 10⁶ cells in
100 µl volume

Contact



www.abclonal.com

Background

This gene encodes a member of the C-type lectin/C-type lectin-like domain (CTL/CTLD) superfamily. The encoded glycoprotein is a small type II membrane receptor with an extracellular C-type lectin-like domain fold and a cytoplasmic domain with an immunoreceptor tyrosine-based activation motif. It functions as a pattern-recognition receptor that recognizes a variety of beta-1,3-linked and beta-1,6-linked glucans from fungi and plants, and in this way plays a role in innate immune response. Alternate transcriptional splice variants, encoding different isoforms, have been characterized. This gene is closely linked to other CTL/CTLD superfamily members on chromosome 12p13 in the natural killer gene complex region.

Immunogen Information

Gene ID

64581

Swiss Prot

Q9BXN2

Immunogen

Recombinant fusion protein containing a sequence corresponding to amino acids 66-247 of human CD369/Dectin-1 (NP_922938.1).

Synonyms

CLEC7A; BGR; CANDF4; CD369; CLECSF12; DECTIN1; SCARE2; C-type lectin domain containing 7A

Product Information

Source

Rabbit

Isotype

IgG

Purification

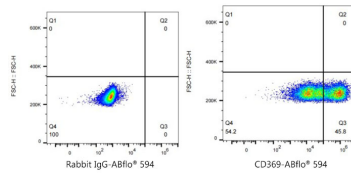
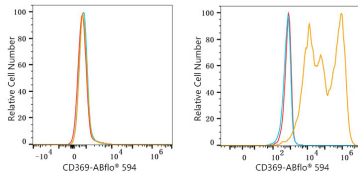
Affinity purification

Storage

Store at 2-8°C. Avoid freeze.

Buffer: PBS with 0.03% proclin300,0.2% BSA,pH7.3.

Validation Data



Flow cytometry: 1×10^6 293F cells (negative control, left) and 293F (Transfection, right) cells were surface-stained with ABflo® 594 Rabbit anti-Human CD369/Dectin-1 mAb (A24273, $5 \mu\text{l}/\text{Test}$, orange line) or ABflo® 594 Rabbit IgG isotype control (A23821, $5 \mu\text{l}/\text{Test}$, blue line). Non-fluorescently stained cells were used as blank control (red line).

Flow cytometry: 1×10^6 293F (Transfection) cells were surface-stained with ABflo® 594 Rabbit IgG isotype control (A23821, $5 \mu\text{l}/\text{Test}$, left) or ABflo® 594 Rabbit anti-Human CD369/Dectin-1 mAb (A24273, $5 \mu\text{l}/\text{Test}$, right).