

**Ataxin 1 Antibody**  
**Ataxin 1 Antibody, Clone S76-8**  
**Catalog # ASM10289**

**Specification**

---

**Ataxin 1 Antibody - Product Information**

Application	<b>WB, IHC, ICC, IP</b>
Primary Accession	<a href="#">P54254</a>
Other Accession	<a href="#">NP_001186233.1</a>
Host	<b>Mouse</b>
Isotype	<b>IgG2b</b>
Reactivity	<b>Human, Mouse, Rat</b>
Clonality	<b>Monoclonal</b>

**Description**

Mouse Anti-Mouse Ataxin 1 Monoclonal IgG2b

**Target/Specificity**

Detects ~85kDa.

**Other Names**

Ataxin-1 Antibody, ATX1 Antibody, Atxn1 Antibody, D6S504E Antibody, OTTHUMP00000016065 Antibody, SCA1 Antibody, Spinocerebellar ataxia type 1 protein Antibody

**Immunogen**

Synthetic peptide amino acids 164-197 (ATTPSQRSQLEAYSTLLANMGSLSQAPGHKVEPP) of mouse Ataxin-1. Rat: 100% identity (34/34 amino acids identical). Human: 88% identity (30/34 amino acids identical).

**Purification**

Protein G Purified

Storage **-20°C**

**Storage Buffer**

PBS pH 7.4, 50% glycerol, 0.1% sodium azide

Shipping Temperature **Blue Ice or 4°C**

**Certificate of Analysis**

1 µg/ml of SMC-455 was sufficient for detection of Ataxin-1 in 20 µg of rat brain lysate by colorimetric immunoblot analysis using Goat anti-mouse IgG:HRP as the secondary antibody.

**Cellular Localization**

Cytoplasm | Nucleus

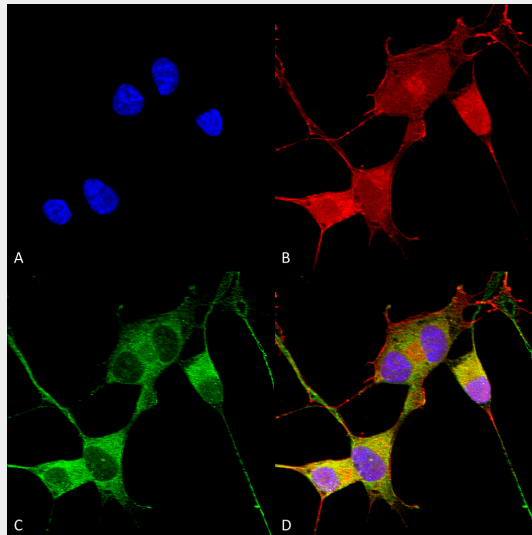
**Ataxin 1 Antibody - Protocols**

Provided below are standard protocols that you may find useful for product applications.

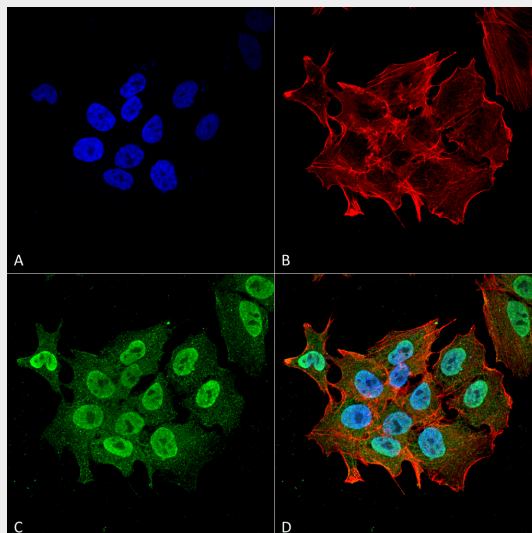
- [Western Blot](#)
- [Blocking Peptides](#)

- [Dot Blot](#)
- [Immunohistochemistry](#)
- [Immunofluorescence](#)
- [Immunoprecipitation](#)
- [Flow Cytometry](#)
- [Cell Culture](#)

### Ataxin 1 Antibody - Images



Immunocytochemistry/Immunofluorescence analysis using Mouse Anti-Ataxin 1 Monoclonal Antibody, Clone N76/8 (ASM10289). Tissue: Neuroblastoma cells (SH-SY5Y). Species: Human. Fixation: 4% PFA for 15 min. Primary Antibody: Mouse Anti-Ataxin 1 Monoclonal Antibody (ASM10289) at 1:100 for overnight at 4°C with slow rocking. Secondary Antibody: AlexaFluor 488 at 1:1000 for 1 hour at RT. Counterstain: Phalloidin-iFluor 647 (red) F-Actin stain; Hoechst (blue) nuclear stain at 1:800, 1.6mM for 20 min at RT. (A) Hoechst (blue) nuclear stain. (B) Phalloidin-iFluor 647 (red) F-Actin stain. (C) Ataxin 1 Antibody (D) Composite.



Immunocytochemistry/Immunofluorescence analysis using Mouse Anti-Ataxin 1 Monoclonal Antibody, Clone N76/8 (ASM10289). Tissue: Neuroblastoma cell line (SK-N-BE). Species: Human. Fixation: 4% Formaldehyde for 15 min at RT. Primary Antibody: Mouse Anti-Ataxin 1 Monoclonal Antibody (ASM10289) at 1:100 for 60 min at RT. Secondary Antibody: Goat Anti-Mouse ATTO 488

at 1:200 for 60 min at RT. Counterstain: Phalloidin Texas Red F-Actin stain; DAPI (blue) nuclear stain at 1:1000, 1:5000 for 60 min at RT, 5 min at RT. Localization: Cytoplasm, Nucleus. Magnification: 60X. (A) DAPI (blue) nuclear stain. (B) Phalloidin Texas Red F-Actin stain. (C) Ataxin 1 Antibody. (D) Composite.

### **Ataxin 1 Antibody - Background**

Ataxin-1 is a member of the ATXN1 protein family and contains a single AXH domain. It is a neurodegenerative disorder protein thought to have a role in the metabolism of RNA as it has been shown to localize to the RNA and transcription dependent inclusions within the nucleus. A mutation of Ataxin-1 is the cause of spinocerebellar ataxia type-1 (SCA1), a progressive, neurodegenerative disease that is autosomal dominant and primarily affects the Purkinje cells found in brain stem neuronal populations and the cerebellum. Expression of Ataxin-1 is almost ubiquitous, except in the brain where it is isolated to populations of neurons.