

**ATG4B Antibody**  
Catalog # ASM10511**Specification****ATG4B Antibody - Product Information**

Application	<b>WB</b>
Primary Accession	<a href="#">O9Y4P1</a>
Other Accession	<a href="#">NP_037457.3</a>
Host	<b>Rabbit</b>
Reactivity	<b>Human, Mouse</b>
Clonality	<b>Polyclonal</b>

**Description**

Rabbit Anti-Human ATG4B Polyclonal

**Target/Specificity**

Detects ~44 kDa.

**Other Names**

MGC1353 Antibody, Autophagy-related cysteine endopeptidase 1 Antibody, ATG4B Antibody, hAPG4B Antibody, AUT-like 1 cysteine endopeptidase Antibody, Cysteine protease ATG4B Antibody, Autophagy-related protein 4 homolog B Antibody, Autophagin-1 Antibody, EC:3.4.22.- Antibody, ATG4B\_HUMAN Antibody, APG4B Antibody, APG4 autophagy 4 homolog B Antibody, AUTL1 Antibody, KIAA0943 Antibody, Autophagy related cysteine endopeptidase 1 Antibody, Autophagin 1 Antibody, ATG4 autophagy related 4 homolog B (S. cerevisiae) Antibody, AUT like 1 cysteine endopeptidase Antibody, Autophagy related protein 4 homolog B Antibody,

**Immunogen**

Synthetic peptide from the N-terminal to mid of Human ATG4B (aa. 94-106)

**Purification**

Peptide Affinity Purified

Storage **-20°C****Storage Buffer**

PBS, 50% glycerol, 0.09% sodium azide

Shipping Temperature

**Blue Ice or 4°C****Certificate of Analysis**

A 1:1000 dilution of SPC-630 was sufficient for detection of ATG4B in 15 µg of Human HeLa Cell Lysates by ECL immunoblot analysis using goat anti-rabbit IgG:HRP as the secondary antibody.

**Cellular Localization**

Cytoplasm

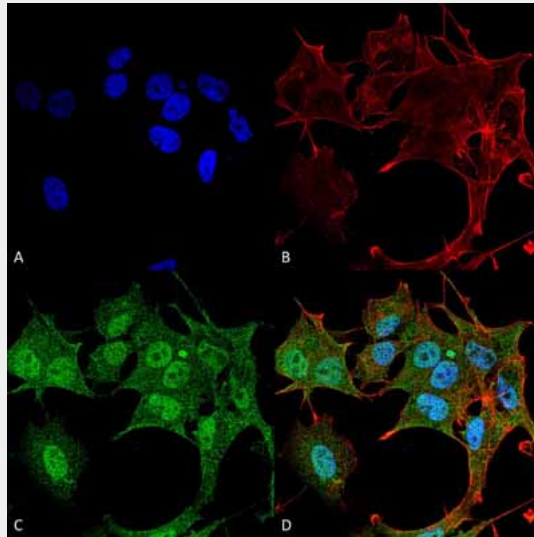
**ATG4B Antibody - Protocols**

Provided below are standard protocols that you may find useful for product applications.

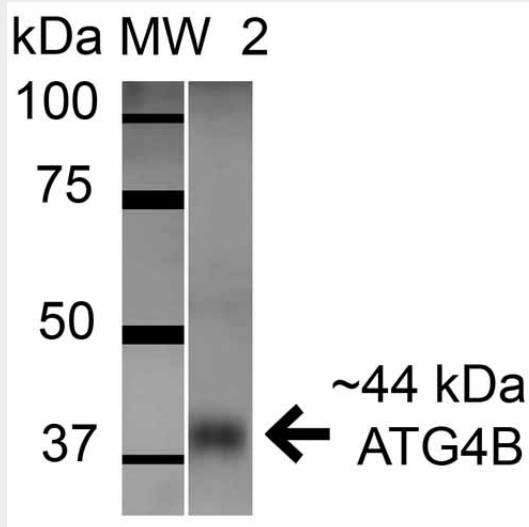
- [Western Blot](#)

- [Blocking Peptides](#)
- [Dot Blot](#)
- [Immunohistochemistry](#)
- [Immunofluorescence](#)
- [Immunoprecipitation](#)
- [Flow Cytometry](#)
- [Cell Culture](#)

**ATG4B Antibody - Images**



Immunocytochemistry/Immunofluorescence analysis using Rabbit Anti-ATG4B Polyclonal Antibody (ASM10511). Tissue: Neuroblastoma cell line (SK-N-BE). Species: Human. Fixation: 4% Formaldehyde for 15 min at RT. Primary Antibody: Rabbit Anti-ATG4B Polyclonal Antibody (ASM10511) at 1:100 for 60 min at RT. Secondary Antibody: Goat Anti-Mouse ATTO 488 at 1:200 for 60 min at RT. Counterstain: Phalloidin Texas Red F-Actin stain; DAPI (blue) nuclear stain at 1:1000, 1:5000 for 60 min at RT, 5 min at RT. Localization: Cytoplasm, Nucleus. Magnification: 60X. (A) DAPI (blue) nuclear stain (B) Phalloidin Texas Red F-Actin stain (C) ATG4B Antibody (D) Composite.



Western blot analysis of Mouse Brain cell lysates showing detection of ATG4B protein using Rabbit Anti-ATG4B Polyclonal Antibody (ASM10511). Lane 1: Molecular Weight Ladder (MW). Lane

2: Mouse Brain cell lysates. Load: 15 µg . Block: 5% Skim Milk in 1X TBST. Primary Antibody: Rabbit Anti-ATG4B Polyclonal Antibody (ASM10511) at 1:1000 for 1 hour at RT. Secondary Antibody: Goat Anti-Rabbit HRP at 1:2000 for 60 min at RT. Color Development: ECL solution for 6 min in RT. Other Band(s): Band appears at ~40 kDa.

### **ATG4B Antibody - Background**

Autophagy related 4B, cysteine peptidase (ATG4B or APG4B) is a C-54 cysteine protease that also belongs to the family of autophagin proteins. Specifically it cleaves LC3, and mutations can be associated with strong inhibition of autophagosome formation.

### **ATG4B Antibody - References**

1. Kabeya Y., et al. (2004) J Cell Sci. 117: 2805-2812.
2. Tanida I., et al. (2004) J Biol Chem. 279: 36268-36276.
3. Hemelaar J., et al. (2003) J Biol Chem. 278: 51841-51850.