

A6068

Leader in Biomolecular Solutions for Life Science



SRSF5 Rabbit pAb

Catalog No.: A6068

Basic Information

Observed MW

40kDa

Calculated MW

31kDa

Category

Polyclonal Antibody

Applications

WB,IP

Cross-Reactivity

Human,Mouse,Rat,Hamster

Background

The protein encoded by this gene is a member of the serine/arginine (SR)-rich family of pre-mRNA splicing factors, which constitute part of the spliceosome. Each of these factors contains an RNA recognition motif (RRM) for binding RNA and an RS domain for binding other proteins. The RS domain is rich in serine and arginine residues and facilitates interaction between different SR splicing factors. In addition to being critical for mRNA splicing, the SR proteins have also been shown to be involved in mRNA export from the nucleus and in translation. Alternative splicing results in multiple transcript variants.

Recommended Dilutions

WB	1:500 - 1:1000
IP	1:20 - 1:50

Immunogen Information

Gene ID	Swiss Prot
6430	Q13243

Immunogen

A synthetic peptide of human SRSF5

Synonyms

HRS; SFRS5; SRP40; SRSF5

Contact

 www.abclonal.com

Product Information

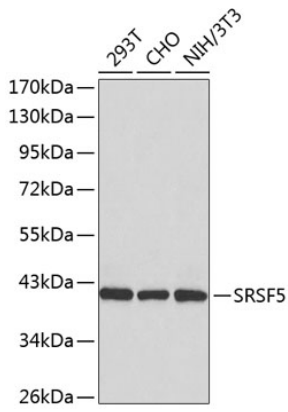
Source	Isotype	Purification
Rabbit	IgG	Affinity purification

Storage

Store at -20°C. Avoid freeze / thaw cycles.

Buffer: PBS with 0.02% sodium azide,50% glycerol,pH7.3.

Validation Data



Western blot analysis of extracts of various cell lines, using SRSF5 antibody (A6068).
Secondary antibody: HRP Goat Anti-Rabbit IgG (H+L) (AS014) at 1:10000 dilution.
Lysates/proteins: 25µg per lane.
Blocking buffer: 3% nonfat dry milk in TBST.