

Anti-Bovine Lactoferrin antibody (NB-22-57106-100)

NB-22-57106-100

GENERAL INFORMATION

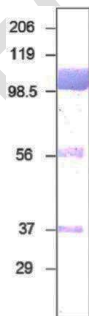
Product Type	Primary antibodies
Short Description	Rabbit polyclonal antibody anti-Bovine Lactoferrin is suitable for use in Confocal Microscopy, ELISA, Immunofluorescence, Immunohistochemistry, Immunoprecipitation and Western Blot research applications
Applications	CM, ELISA, IF, IHC, IP, WB
Host/Source	Rabbit
Reactivity	Bovine, Sheep

PRODUCT PROPERTIES

Clonality	Polyclonal
Clone ID	
Concentration	0.75 µg/µl
Conjugation	Unconjugated
Purification	Affinity Purified
Dilution Range	WB: 1:500 IP: 1:200 IHC: 1:200 ICC: 1:200 IF: 1:200 CFM: 1:200
Formulation	
Isotype	IgG
Storage	Store at -20°C for long term storage. Avoid freeze-thaw cycles.
Instruction	

TARGET INFORMATION

Gene ID	
Gene Symbol	
Uniprot ID	Purified bovine Lactoferrin protein
Immunogen	
Immunogen	
Region	
Specificity	
Immunogen	
sequence	



Western blot with Anti-Bovine Lactoferrin Antibody (STJ500255) with peptide on at 1:500 dilution in buffer.