

**KCNQ2 Antibody**  
**KCNQ2 Antibody, Clone S26A-23**  
**Catalog # ASM10186****Specification**

---

**KCNQ2 Antibody - Product Information**

Application	<b>IHC, WB</b>
Primary Accession	<a href="#">O43526</a>
Other Accession	<a href="#">NP_004509.2</a>
Host	<b>Mouse</b>
Isotype	<b>IgG1</b>
Reactivity	<b>Human, Mouse, Rat, Hamster</b>
Clonality	<b>Monoclonal</b>

**Description**

Mouse Anti-Human KCNQ2 Monoclonal IgG1

**Target/Specificity**

Detects ~95kDa.

**Other Names**

BFNC Antibody, EBN1 Antibody, ENB1 Antibody, HNSPC Antibody, KCNA11 Antibody, KQT like 2 Antibody, KV7.2 Antibody, KVEBN1. KvLQT2 Antibody, voltage gated potassium channel subunit Kv7.2 Antibody

**Immunogen**

Fusion protein amino acids 1-59 of human KCNQ2

**Purification**

Protein G Purified

Storage **-20°C****Storage Buffer**

PBS pH7.4, 50% glycerol, 0.09% sodium azide

Shipping Temperature **Blue Ice or 4°C****Certificate of Analysis**

1 µg/ml of SMC-308 was sufficient for detection of KCNQ2 in 10 µg of COS-1 cell lysate transiently expressing KCNQ2 by colorimetric immunoblot analysis using Goat anti-mouse IgG:HRP as the secondary antibody.

**Cellular Localization**

Membrane

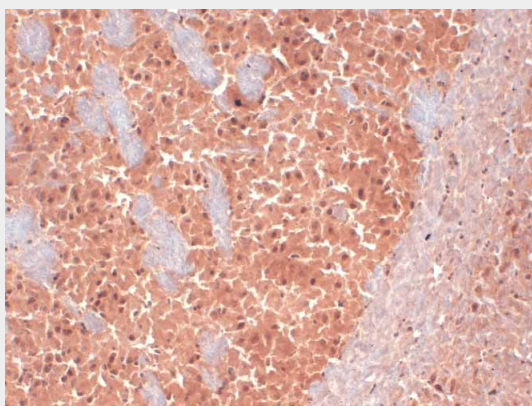
**KCNQ2 Antibody - Protocols**

Provided below are standard protocols that you may find useful for product applications.

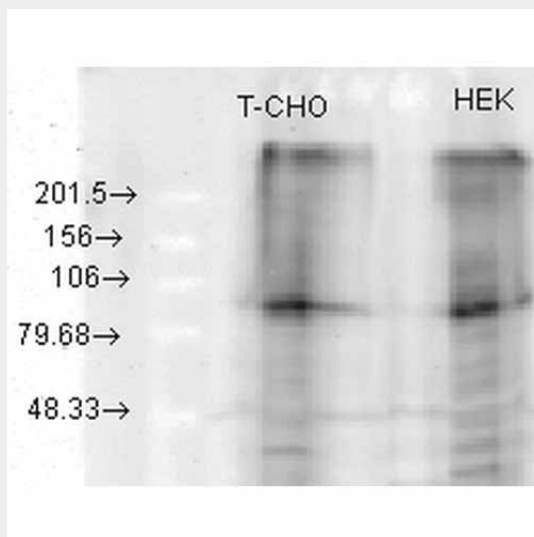
- [Western Blot](#)
- [Blocking Peptides](#)

- [Dot Blot](#)
- [Immunohistochemistry](#)
- [Immunofluorescence](#)
- [Immunoprecipitation](#)
- [Flow Cytometry](#)
- [Cell Culture](#)

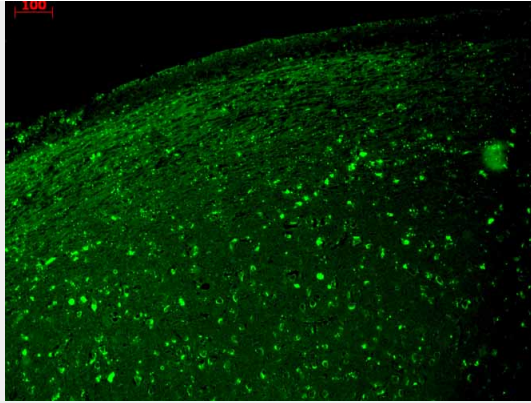
### KCNQ2 Antibody - Images



Immunohistochemistry analysis using Mouse Anti-KCNQ2 Monoclonal Antibody, Clone S26A-23 (ASM10186). Tissue: frozen brain section. Species: Mouse. Fixation: 10% Formalin Solution for 12-24 hours at RT. Primary Antibody: Mouse Anti-KCNQ2 Monoclonal Antibody (ASM10186) at 1:1000 for 1 hour at RT. Secondary Antibody: HRP/DAB Detection System: Biotinylated Goat Anti-Mouse, Streptavidin Peroxidase, DAB Chromogen (brown) for 30 minutes at RT. Counterstain: Mayer Hematoxylin (purple/blue) nuclear stain at 250-500  $\mu$ l for 5 minutes at RT.



Western Blot analysis of Human, hamster HEK and CHO cell lysates showing detection of KCNQ2 protein using Mouse Anti-KCNQ2 Monoclonal Antibody, Clone S26A-23 (ASM10186). Load: 15  $\mu$ g. Block: 1.5% BSA for 30 minutes at RT. Primary Antibody: Mouse Anti-KCNQ2 Monoclonal Antibody (ASM10186) at 1:1000 for 2 hours at RT. Secondary Antibody: Sheep Anti-Mouse IgG: HRP for 1 hour at RT. KCNQ2 overexpressed.



Immunohistochemistry analysis using Mouse Anti-KCNQ2 Monoclonal Antibody, Clone S26A-23 (ASM10186). Tissue: hippocampus. Species: Human. Fixation: Bouin's Fixative and paraffin-embedded. Primary Antibody: Mouse Anti-KCNQ2 Monoclonal Antibody (ASM10186) at 1:1000 for 1 hour at RT. Secondary Antibody: FITC Goat Anti-Mouse (green) at 1:50 for 1 hour at RT.

### **KCNQ2 Antibody - Background**

Kv7.2 (KvLQT2) is a potassium channel protein coded for by the gene KCNQ2. It is associated with benign familial neonatal convulsions (1).

### **KCNQ2 Antibody - References**

1. Wuttke T.V., et al. (2008) J Physiol. 586(2): 545-555.