

LRP4 (Cytoplasmic) Antibody
LRP4 Antibody, Clone S164-6
Catalog # ASM10249**Specification**

LRP4 (Cytoplasmic) Antibody - Product Information

Application	WB
Primary Accession	O8VI56
Other Accession	NP_766256.3
Host	Mouse
Isotype	IgG1
Reactivity	Human, Mouse, Rat
Clonality	Monoclonal

Description

Mouse Anti-Mouse LRP4 (Cytoplasmic) Monoclonal IgG1

Target/Specificity

Detects the cytoplasmic domain of LRP4 ~215kDa, small degradation products ~100kD.

Other Names

Corin Antibody, KIAA0816 Antibody, LDLR Antibody, LDLR dan Antibody, Low density lipoprotein receptor related protein 4 Antibody, LRP-4 Antibody, LRP10 Antibody, MEGF7 Antibody, Multiple epidermal growth factor like domains 7 Antibody

Immunogen

Fusion protein amino acids 1747-1905 (cytoplasmic C-terminus) of mouse LRP4

Purification

Protein G Purified

Storage **-20°C**

Storage Buffer

PBS pH7.4, 50% glycerol, 0.09% sodium azide

Shipping Temperature

Blue Ice or 4°C

Certificate of Analysis

1 µg/ml of SMC-415 was sufficient for detection of LRP4 in 20 µg of rat brain lysate by colorimetric immunoblot analysis using Goat anti-mouse IgG:HRP as the secondary antibody.

Cellular Localization

Membrane

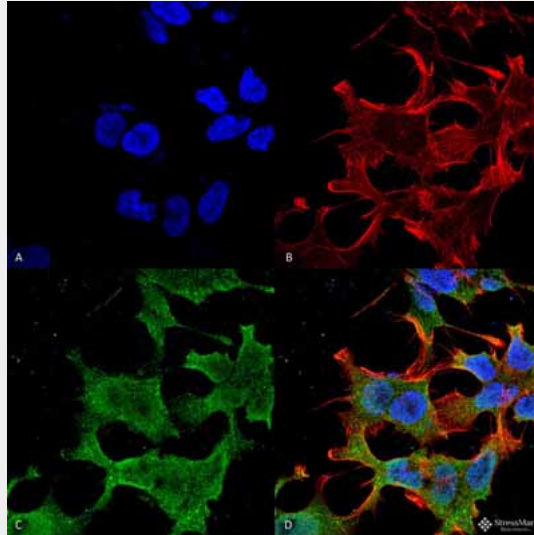
LRP4 (Cytoplasmic) Antibody - Protocols

Provided below are standard protocols that you may find useful for product applications.

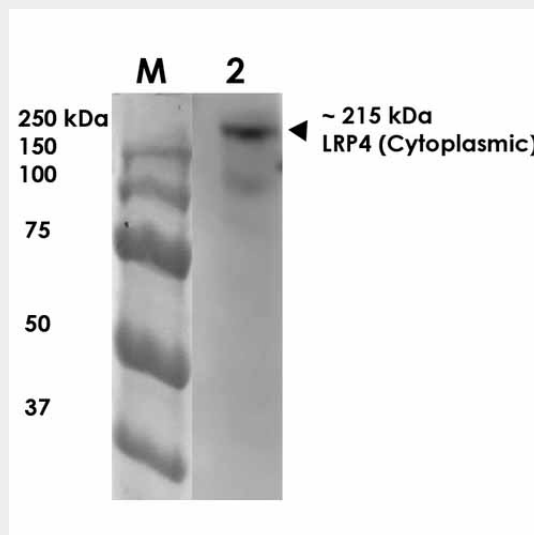
- [Western Blot](#)
- [Blocking Peptides](#)
- [Dot Blot](#)

- [Immunohistochemistry](#)
- [Immunofluorescence](#)
- [Immunoprecipitation](#)
- [Flow Cytometry](#)
- [Cell Culture](#)

LRP4 (Cytoplasmic) Antibody - Images



Immunocytochemistry/Immunofluorescence analysis using Mouse Anti-LRP4 (Cytoplasmic) Monoclonal Antibody, Clone S164-6 (ASM10249). Tissue: Neuroblastoma cell line (SK-N-BE). Species: Human. Fixation: 4% Formaldehyde for 15 min at RT. Primary Antibody: Mouse Anti-LRP4 (Cytoplasmic) Monoclonal Antibody (ASM10249) at 1:100 for 60 min at RT. Secondary Antibody: Goat Anti-Mouse ATTO 488 at 1:100 for 60 min at RT. Counterstain: Phalloidin Texas Red F-Actin stain; DAPI (blue) nuclear stain at 1:1000, 1:5000 for 60min RT, 5min RT. Localization: Membrane. Magnification: 60X. (A) DAPI (blue) nuclear stain (B) Phalloidin Texas Red F-Actin stain (C) LRP4 (Cytoplasmic) Antibody (D) Composite.



Western Blot analysis of Rat Brain Membrane showing detection of ~215 kDa LRP4 protein using Mouse Anti-LRP4 Monoclonal Antibody, Clone S164-6 (ASM10249). Lane 1: MW Ladder. Lane 2: Rat Brain Membrane. Load: 10 µg. Block: 5% milk. Primary Antibody: Mouse Anti-LRP4 Monoclonal Antibody (ASM10249) at 1:1000 for 1 hour at RT. Secondary Antibody: Goat Anti-Mouse IgG: HRP

at 1:200 for 1 hour at RT. Color Development: TMB solution for 10 min at RT. Predicted/Observed Size: ~215 kDa.

LRP4 (Cytoplasmic) Antibody - Background

Potential cell surface endocytic receptor, which binds and internalizes extracellular ligands for degradation by lysosomes. It is involved in the negative regulation of the canonical Wnt signaling pathway, being able to antagonize the LRP6-mediated activation of this pathway.

LRP4 (Cytoplasmic) Antibody - References

1. Bennett V., Baines A.J. (2001) *Physiol. Rev.* 81 (3): 1353-92.