

RP10114LQ

Leader in Biomolecular Solutions for Life Science



Recombinant Human SUMO-1 protein

Catalog No.: RP10114LQ **Recombinant**

Sequence Information

| Species | Gene ID | Swiss Prot |
|----------------|---------|------------|
| <i>E. coli</i> | 7341 | P63165 |

Tags

GST Tag

Synonyms

DAP1;GMP1;OFC10;PIC1;SENP2;SMT3;
SMT3C;SMT3H3;UBL1;SUMO1;SUMO-1
; DAP1; GMP1; OFC10; PIC1; SENP2;
SMT3; SMT3C; SMT3H3; UBL1; small
ubiquitin-like modifier 1

Product Information

| Source | Purification |
|----------------|----------------------|
| <i>E. coli</i> | ~95% by SDS- PAGE |

Endotoxin

Formulation

20 mM Tris, 150 mM NaCl, 2 mM βME,
10% Glycerol

Reconstitution

Background

SUMO (small Ub-related modifier) is a Ub-like protein. Three types of SUMO are most commonly studied, SUMO 1, SUMO 2, and SUMO 3. SUMO 2 and SUMO 3 are almost identical isoforms and thus share many functions. Like Ub, SUMO can be conjugated to its target proteins as a polymeric chain. However, SUMO 1 forms chains inefficiently as compared to SUMO 2 and SUMO 3. SUMO is conjugated to target proteins by the E1 (SAE1/SAE2), E2 (Ube2I or Ubc9), E3 (RanBP2/Nup358, amongst others). Protein sumoylation is involved in many cellular processes including gene transcription.

Basic Information

Description

Bio-Activity

Storage

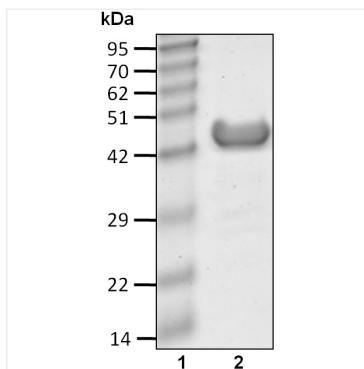
Store at -70°C. This product is stable at ≤ -70°C for up to 1 year from the date of receipt. For optimal storage, aliquot into smaller quantities after centrifugation and store at recommended temperature. Avoid repeated freeze-thaw cycles. Avoid repeated freeze/thaw cycles.

Contact



www.abclonal.com

Validation Data



Recombinant human SUMO-1 protein was determined by SDS-PAGE with Coomassie Blue.