

## PlateReady™ Vero 96 Well Plates

REF: VERO0096PSCLHIG

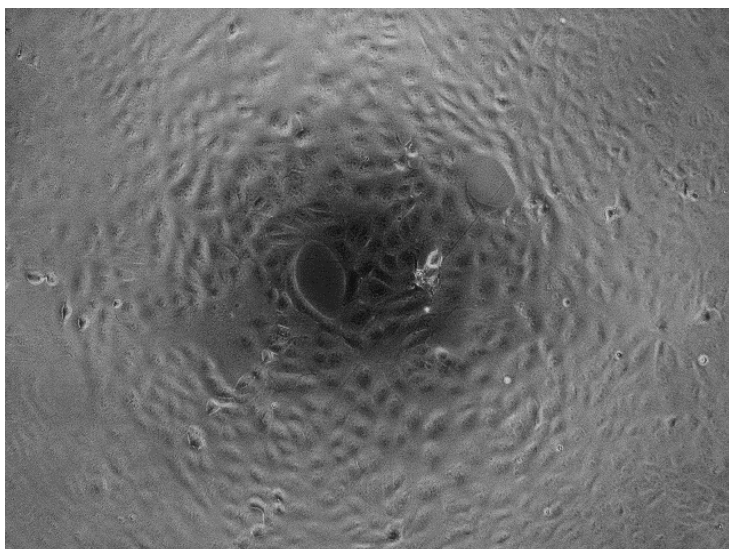
*For research use only. Not for use in diagnostic procedures.*

### Description

PlateReady™ Vero 96 Well Plates contain adherent kidney epithelial cells from a normal African green monkey. The cells are cryopreserved directly adhered to 96 well plates with the use of CryoLogyx's patented CryoShield™ formulation. The Vero E6 cell line is a well characterised cell line that has been widely used in verotoxin detection, mycoplasma testing and testing Virucidal efficacy of different formulations (EN14476).<sup>1</sup> PlateReady™ Vero 96 Well Plates are compatible with all major assays 24 hours after thawing. Over 80% cell viability is expected post - thaw, with cells retaining healthy morphology, immediate proliferative capacity, metabolic activity and membrane integrity.

PlateReady™ Vero 96 Well Plates are provided at one confluency level:

- High (VERO0096PSCLHIG), > 70% confluency, ~25k cell per well



### Application Notes

PlateReady™ Vero 96 Well Plates can be used to replace conventionally cultured cells for all major assays.

[Application Notes](#) for the following assays are available:

- Substance/Drug IC<sub>50</sub> value determination

## Product Specification

### PlateReady™ Plates

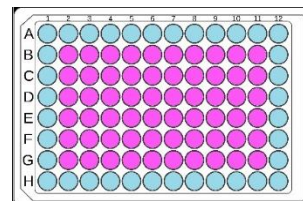


Simplifying and accelerating cell-based assays

#### Content

Cryopreserved adherent Vero cells in a 96 well plate. Each well contains 100 µL of CryoLogyx's proprietary cryoprotectant formulation.

No cells are present in rows A and H and columns 1 and 12 to avoid assay edge effects (blue on diagram).



#### Plate Dimensions

The 96 well plates used to produce PlateReady Vero 96 Well Plates are sourced from Greiner Bio-one (catalogue code 655180). The plate dimensions without a lid are 127.5 mm (L) x 85 mm (W) x 1 mm (H). The exact [dimensions](#) and [datasheets](#) can be found on the Greiner Bio-one website.


#### Receipt & Storage

**Product shipment:** Dry ice. Upon receipt, confirm that dry ice is covering the PlateReady™ Vero 96 Well Plates.

**Product storage:** immediately transfer to -80 °C freezer. Note: Storage at higher temperatures (>-80 °C) may affect the expiry date stated on the packaging.

**Product use:** Consult the "[General Thaw-and-Use PlateReady™ Vero 96 Well Plates Protocol](#)" when thawing. Thawed products cannot be re-frozen.

#### Symbols on Labels

<b>REF</b>	Reference number
<b>LOT</b>	Lot number
	Expiry date

#### Packaging & Plate Information

**Information on packaging:** Reference number, lot number, expiry date, Quickstart guide, QR code for further detailed instructions.

**Information on well plate:** cell type, passage number and lot number encoded barcode

#### Precautions

This product is for professional laboratory use only. The data and results produced using PlateReady™ Vero 96 Well Plates should not be used for diagnostic purposes, therapeutics or human and animal consumption.

## Product Specification

### PlateReady™ Plates



Simplifying and accelerating cell-based assays

PlateReady™ Vero 96 Well Plates utilise Vero cells sourced from ATCC (CCL-81™). Vero cells are classified as BSL 1 and are of minimal risk to the user. However, it is the users responsibility to understand the hazards associated with the material per the organisation's policies and procedures as well as any other applicable regulations enforced by your local or national agencies.

CryoLogyx highly recommends that appropriate personal protective equipment is used when removing the plates from dry ice shipping and handling plates stored at -80 °C.

#### Certificate of Analysis

Certificate of analysis is available on delivery and can also be requested at [www.cryologyx.com](http://www.cryologyx.com) or by email at [info@cryologyx.com](mailto:info@cryologyx.com).

#### Warranty

CryoLogyx possesses a limited warranty restricting our liability to replace this product. CryoLogyx does not provide any other warranties of any kind, expressed or implied. However, our customer service team are willing to deal with requests case-by-case.

#### Proprietary Information

The recipient of PlateReady™ Vero 96 Well Plates agrees to use the product for the purposes of conducting assays and not to subculture or give them to a third party.

The cryoprotectant formulations used to produce CryoLogyx products are covered by patents which is the property of CryoLogyx and the University of Warwick. Use of the cryoprotectant formulation or any attempt to reverse engineer the formulation is an infringement of these patents unless CryoLogyx has provided written permission.

#### Contact Information

CryoLogyx Ltd.  
The Venture Centre  
Sir William Lyons Road,  
Coventry, CV4 7EZ.  
Email: [info@cryologyx.com](mailto:info@cryologyx.com)  
Website: [www.cryologyx.com](http://www.cryologyx.com)

#### References

1. Rabenau, H. F.; Rapp, I.; and Steinmann, J. *BMC Infect Dis.*, 2010, 10, 185.