

Beclin 2 Antibody
Catalog # ASM10493**Specification**

Beclin 2 Antibody - Product Information

Application	WB
Primary Accession	P0DM65
Other Accession	NP_001277621.1
Host	Rabbit
Reactivity	Human, Mouse
Clonality	Polyclonal

Description

Rabbit Anti-Mouse Beclin 2 Polyclonal

Target/Specificity

Detects ~48 kDa.

Other Names

Becn2 Antibody, Beclin-2 Antibody, PFM 2 Antibody, Antibody, PR domain zinc finger protein 5 Antibody, Antibody, PRDM 5 Antibody, Antibody, PRDM5 protein Antibody, Antibody, PR domain-containing protein 5 Antibody, Antibody, PRDM5 Antibody, Antibody, PFM2 Antibody, Antibody, PR domain containing 5 Antibody, Antibody, PRDM5_HUMAN Antibody, Antibody, PR domain containing protein 5 Antibody, Antibody, BCS2 Antibody, Antibody,

Immunogen

Synthetic peptide from the C-terminal of Mouse Beclin 2 (aa. 410-421)

Purification

Peptide Affinity Purified

Storage **-20°C****Storage Buffer**

PBS, 50% glycerol, 0.09% sodium azide

Shipping Temperature

Blue Ice or 4°C**Certificate of Analysis**

A 1:1000 dilution of SPC-604 was sufficient for detection of Beclin 2 in 15 µg of Human HeLa Cell Lysates by ECL immunoblot analysis using goat anti-rabbit IgG:HRP as the secondary antibody.

Cellular Localization

Cytoplasm

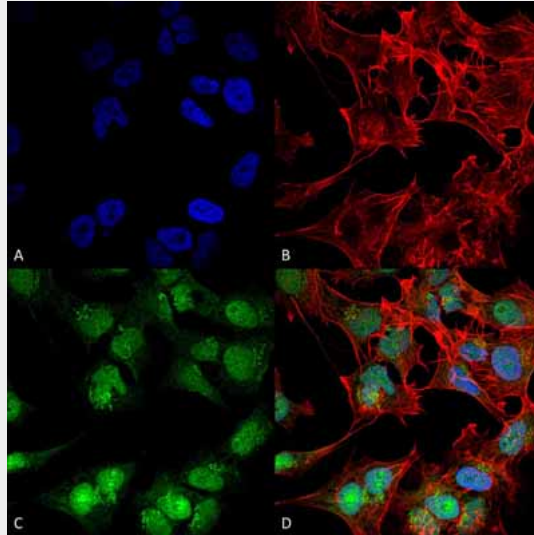
Beclin 2 Antibody - Protocols

Provided below are standard protocols that you may find useful for product applications.

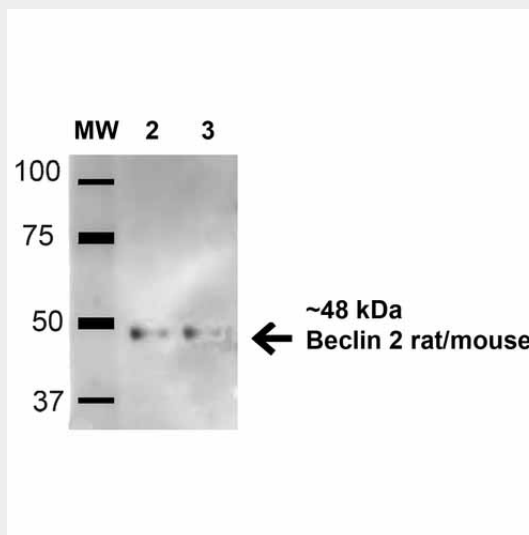
- [Western Blot](#)
- [Blocking Peptides](#)
- [Dot Blot](#)

- [Immunohistochemistry](#)
- [Immunofluorescence](#)
- [Immunoprecipitation](#)
- [Flow Cytometry](#)
- [Cell Culture](#)

Beclin 2 Antibody - Images

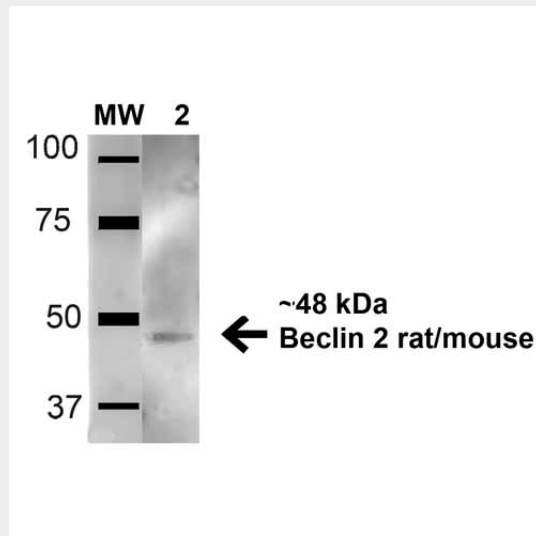


Immunocytochemistry/Immunofluorescence analysis using Rabbit Anti-Beclin 2 Polyclonal Antibody (ASM10493). Tissue: Neuroblastoma cell line (SK-N-BE). Species: Human. Fixation: 4% Formaldehyde for 15 min at RT. Primary Antibody: Rabbit Anti-Beclin 2 Polyclonal Antibody (ASM10493) at 1:100 for 60 min at RT. Secondary Antibody: Goat Anti-Mouse ATTO 488 at 1:200 for 60 min at RT. Counterstain: Phalloidin Texas Red F-Actin stain; DAPI (blue) nuclear stain at 1:1000, 1:5000 for 60 min at RT, 5 min at RT. Localization: Cytoplasm, Nucleus. Magnification: 60X. (A) DAPI (blue) nuclear stain (B) Phalloidin Texas Red F-Actin stain (C) Beclin 2 Antibody (D) Composite.



Western blot analysis of Human HeLa and 293Trap cell lysates showing detection of 48.1 kDa Beclin 2 protein using Rabbit Anti-Beclin 2 Polyclonal Antibody (ASM10493). Lane 1: Molecular Weight Ladder (MW). Lane 2: Human HeLa and 293Trap cell lysates. Load: 15 µg . Block: 5% Skim Milk in 1X TBST. Primary Antibody: Rabbit Anti-Beclin 2 Polyclonal Antibody (ASM10493) at 1:1000

for 1 hour at RT. Secondary Antibody: Goat Anti-Rabbit HRP at 1:2000 for 60 min at RT. Color Development: ECL solution for 6 min in RT. Predicted/Observed Size: 48.1 kDa.



Western blot analysis of Mouse Brain cell lysates showing detection of 48.1 kDa Beclin 2 protein using Rabbit Anti-Beclin 2 Polyclonal Antibody (ASM10493). Lane 1: Molecular Weight Ladder (MW). Lane 2: Mouse Brain cell lysates. Load: 15 μ g . Block: 5% Skim Milk in 1X TBST. Primary Antibody: Rabbit Anti-Beclin 2 Polyclonal Antibody (ASM10493) at 1:1000 for 1 hour at RT. Secondary Antibody: Goat Anti-Rabbit HRP at 1:2000 for 60 min at RT. Color Development: ECL solution for 6 min in RT. Predicted/Observed Size: 48.1 kDa.

Beclin 2 Antibody - Background

Beclin 2 is a novel coiled-coil protein related to the autophagic Beclin 1 protein. It is thought to interact with Bcl-2, an anti-apoptotic protein, and is believed to function in autophagy. It has also been found to mediate G protein-coupled receptor (GPCR) degradation (1).

Beclin 2 Antibody - References

1. He C., et al. (2013) Cell. 154(5): 1085-1099.