

AS092

Leader in Biomolecular Solutions for Life Science



HRP-conjugated Rabbit anti-Human IgG1 (Fc) mAb

Catalog No.: AS092

Basic Information

Observed MW

50kDa

Calculated MW

Category

Secondary Antibody

Applications

WB

Cross-Reactivity

Human

CloneNo number

ARC53385-HRP

Conjugate

HRP

Recommended Dilutions

WB 1:2000 - 1:30000

Contact

 www.abclonal.com

Background

Secondary antibodies are affinity-purified antibodies which will work with target-specific primary antibody in the detection, sorting or purification of its specified target. Secondary antibodies offer increased versatility enabling users to use many detection systems (e.g. HRP, AP, fluorescence). They can also provide greater sensitivity through signal amplification as multiple secondary antibodies. Most commonly, secondary antibodies are generated by immunizing the host animal (different from host species of primary antibody) with a pooled population of normal immunoglobulins from the host species of primary antibody and can be further purified and modified (i.e. antibody fragmentation, label conjugation, etc.) to ensure well-characterized specificity to corresponding normal immunoglobulins.

Immunogen Information

Gene ID **Swiss Prot**

Immunogen

Human IgG

Synonyms

Product Information

Source

Rabbit

Isotype

Horseradish peroxidase
conjugated IgG

Purification

Affinity purification

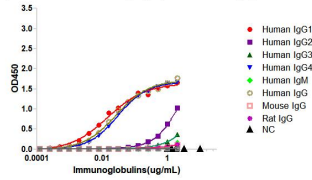
Storage

Store at -20°C. Avoid freeze / thaw cycles.

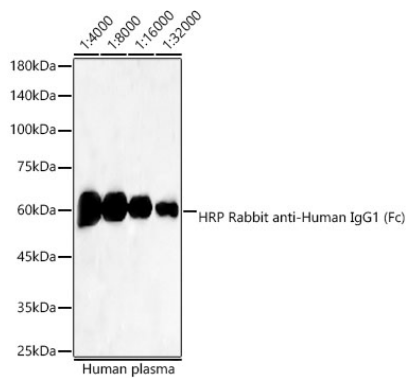
Buffer: PBS with 0.03% proclin300,50% glycerol,pH7.3.

Validation Data

Affinity of Rabbit Anti-Human IgG (Fc) mAb, HRP conjugated



Dose response curve of HRP conjugated Rabbit Anti-Human IgG (Fc) mAb measured by ELISA. 1 µg/mL of various immunoglobulins were coated to 384-well plate., blank wells without protein were used as negative control (NC). The coated plate was blocked and subsequently incubated with 25 µL of HRP conjugated Rabbit Anti-Human IgG (Fc) mAb in a 2 fold serial dilution from 2 µg/mL to 6.1*10⁻⁵ pg/mL, incubation was performed at room temperature for 1 hour. The ELISA result demonstrated that Rabbit Anti-Human IgG (Fc) mAb has highly specific recognition of Human total IgG, Human IgG1, Human IgG4, Human IgG2 and minimal cross reactivity to Human IgG3 while no cross reactivity to Human IgM, Mouse IgG, Rat IgG.



Western blot analysis of various lysates, using HRP Rabbit anti-Human IgG1 (Fc) (AS092) at 1:4000-1:32000 dilution.

Lysates/proteins: 25µg per lane.

Blocking buffer: 3% nonfat dry milk in TBST.

Detection: ECL Basic Kit (RM00020).

Exposure time: 30s.