

Protocadherin Gamma (pan) Antibody
Protocadherin Gamma Antibody, Clone S159-5
Catalog # ASM10288

Specification

Protocadherin Gamma (pan) Antibody - Product Information

Application	WB
Primary Accession	O91XZ0
Other Accession	NP_291062.1
Host	Mouse
Isotype	IgG1
Reactivity	Human, Mouse, Rat
Clonality	Monoclonal

Description

Mouse Anti-Mouse Protocadherin Gamma (pan) Monoclonal IgG1

Target/Specificity

Detects ~100kDa. Cross-reacts with all Gamma-protocadherin-A, -B and -C proteins.

Other Names

PCDH gamma A Antibody, PCDH-gamma-A Antibody, PCDHGA Antibody, Protocadherin gamma A Antibody, Protocadherin gamma subfamily A Antibody, Gamma Protocadherin A (pan) Antibody, Pan-Gamma-Protocadherin-A Antibody, Pan Gamma Protocadherin A Antibody

Immunogen

Fusion protein corresponding to amino acids 808-931 (C-terminal cytoplasmic constant domain) of mouse Protocadherin-gamma-A1 that is shared by all 22 Gamma-protocadherins (A subfamily amino acids ~807-930, B subfamily amino acids ~789-912 and C subfamily amino acids ~818-941). 99% identity with human (123/124 amino acids).

Purification

Protein G Purified

Storage **-20°C**

Storage Buffer

PBS pH 7.4, 50% glycerol, 0.1% sodium azide

Shipping Temperature

Blue Ice or 4°C

Certificate of Analysis

1 µg/ml of SMC-454 was sufficient for detection of Protocadherin gamma (pan) in 20 µg of rat brain lysate by colorimetric immunoblot analysis using Goat anti-mouse IgG:HRP as the secondary antibody.

Cellular Localization

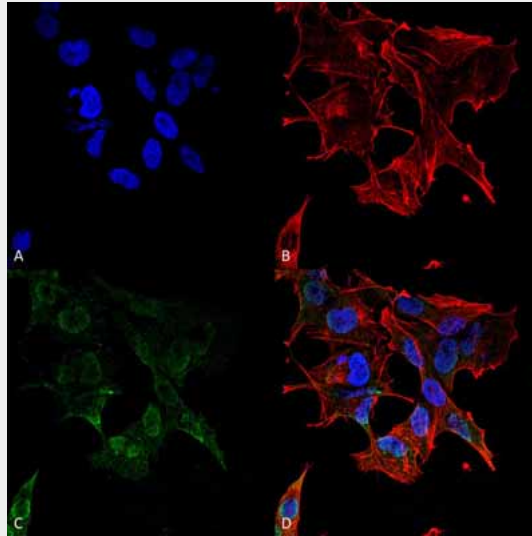
Cell Membrane

Protocadherin Gamma (pan) Antibody - Protocols

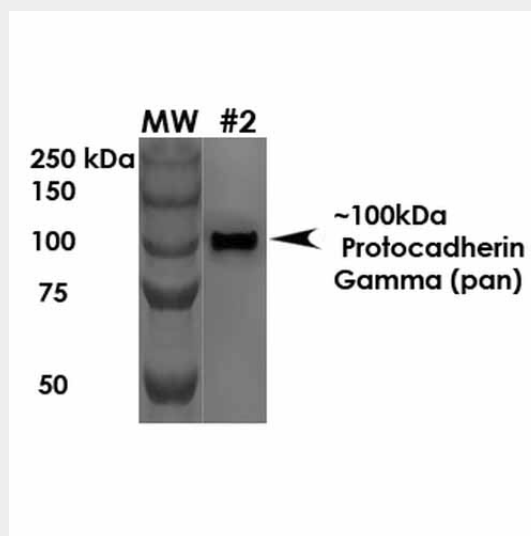
Provided below are standard protocols that you may find useful for product applications.

- [Western Blot](#)
- [Blocking Peptides](#)
- [Dot Blot](#)
- [Immunohistochemistry](#)
- [Immunofluorescence](#)
- [Immunoprecipitation](#)
- [Flow Cytometry](#)
- [Cell Culture](#)

Protocadherin Gamma (pan) Antibody - Images



Immunocytochemistry/Immunofluorescence analysis using Mouse Anti-Protocadherin Gamma (pan) Monoclonal Antibody, Clone S159-5 (ASM10288). Tissue: Neuroblastoma cell line (SK-N-BE). Species: Human. Fixation: 4% Formaldehyde for 15 min at RT. Primary Antibody: Mouse Anti-Protocadherin Gamma (pan) Monoclonal Antibody (ASM10288) at 1:100 for 60 min at RT. Secondary Antibody: Goat Anti-Mouse ATTO 488 at 1:200 for 60 min at RT. Counterstain: Phalloidin Texas Red F-Actin stain; DAPI (blue) nuclear stain at 1:1000, 1:5000 for 60 min at RT, 5 min at RT. Localization: Cell Membrane, Nucleus . Magnification: 60X.



Western Blot analysis of Rat Brain Membrane showing detection of ~100 kDa Protocadherin Gamma protein using Mouse Anti-Protocadherin Gamma Monoclonal Antibody, Clone S159-5

(ASM10288). Load: 10 µg. Primary Antibody: Mouse Anti-Protocadherin Gamma Monoclonal Antibody (ASM10288) at 1:1000 for 1 hour at RT. Secondary Antibody: Goat Anti-Mouse HRP at 1:200 for 1 hour at RT. Predicted/Observed Size: ~100 kDa.

Protocadherin Gamma (pan) Antibody - Background

The protocadherin gamma gene cluster is one of three related clusters tandemly linked on chromosome five. These gene clusters have an immunoglobulin-like organization, suggesting that a novel mechanism may be involved in their regulation and expression. The gamma gene cluster includes 22 genes divided into 3 subfamilies. Subfamily A contains 12 genes, subfamily B contains 7 genes and 2 pseudogenes, and the more distantly related subfamily C contains 3 genes. The tandem array of 22 large, variable region exons are followed by a constant region, containing 3 exons shared by all genes in the cluster. Each variable region exon encodes the extracellular region, which includes 6 cadherin ectodomains and a transmembrane region. The constant region exons encode the common cytoplasmic region. These neural cadherin-like cell adhesion proteins most likely play a critical role in the establishment and function of specific cell-cell connections in the brain. Alternative splicing has been described for the gamma cluster genes.