

**GABA-A Receptor Delta Antibody**  
**GABA A Receptor Delta Antibody, Clone S151-3**  
**Catalog # ASM10221**

**Specification**

---

**GABA-A Receptor Delta Antibody - Product Information**

Application	<b>WB</b>
Primary Accession	<a href="#">P18506</a>
Other Accession	<a href="#">NP_058985.1</a>
Host	<b>Mouse</b>
Isotype	<b>IgG2a</b>
Reactivity	<b>Human, Mouse, Rat</b>
Clonality	<b>Monoclonal</b>
Format	<b>ATTO 390</b>

**Description**

Mouse Anti-Rat GABA-A Receptor Delta Monoclonal IgG2a

**Target/Specificity**

Detects ~55kDa.

**Other Names**

GABAA-RD Antibody, Gabrd Antibody, MGC105467 Antibody

**Immunogen**

Synthetic peptide amino acids 15-34 of rat GABA-A-R-Delta

**Purification**

Protein G Purified

Storage **-20°C**

**Storage Buffer**

PBS pH7.4, 50% glycerol, 0.09% sodium azide

Shipping Temperature **Blue Ice or 4°C**

**Certificate of Analysis**

2 µg/ml of SMC-345 was sufficient for detection of Delta1 GABA-A receptor in 10 µg of rat brain lysate by colorimetric immunoblot analysis using goat anti-mouse IgG:HRP as the secondary antibody.

**Cellular Localization**

Cell Membrane | Cell Junction | Synapse | Postsynaptic Cell Membrane

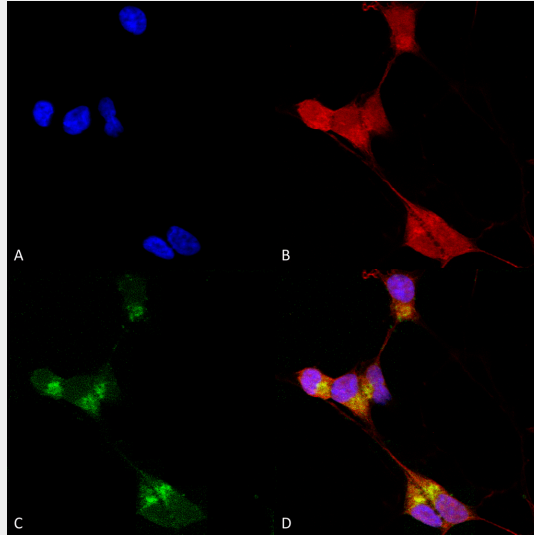
**GABA-A Receptor Delta Antibody - Protocols**

Provided below are standard protocols that you may find useful for product applications.

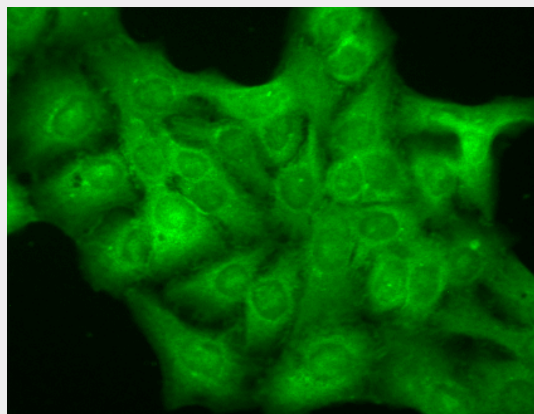
- [Western Blot](#)
- [Blocking Peptides](#)
- [Dot Blot](#)

- [Immunohistochemistry](#)
- [Immunofluorescence](#)
- [Immunoprecipitation](#)
- [Flow Cytometry](#)
- [Cell Culture](#)

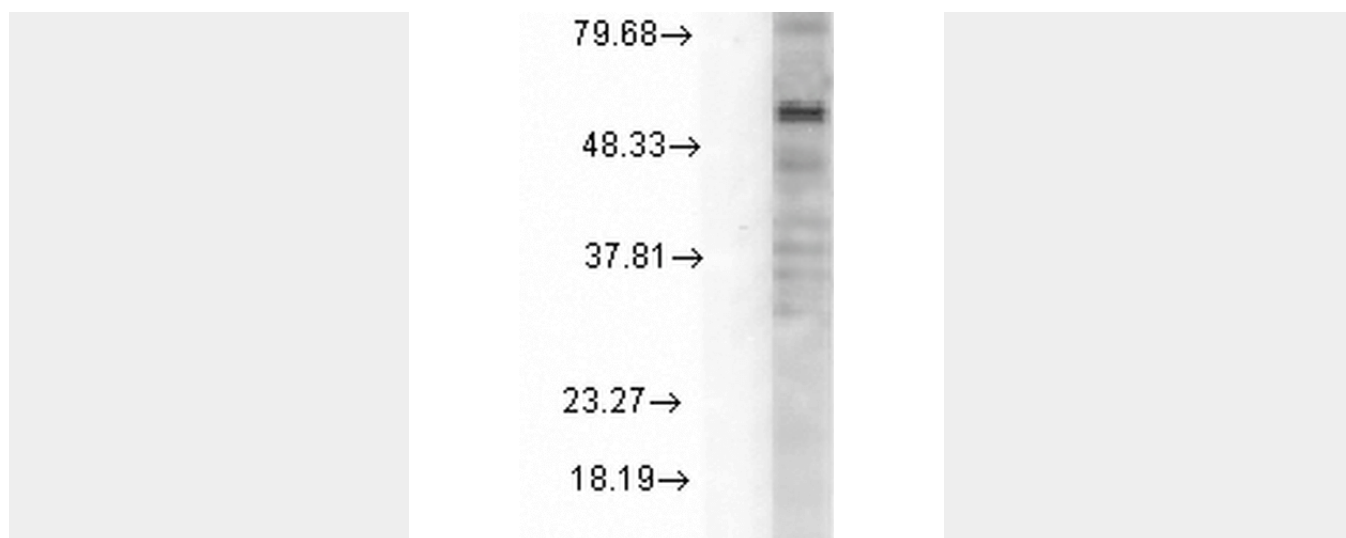
### GABA-A Receptor Delta Antibody - Images



Immunocytochemistry/Immunofluorescence analysis using Mouse Anti-GABA-A Receptor Delta Monoclonal Antibody, Clone N151/3 (ASM10221). Tissue: Neuroblastoma cells (SH-SY5Y). Species: Human. Fixation: 4% PFA for 15 min. Primary Antibody: Mouse Anti-GABA-A Receptor Delta Monoclonal Antibody (ASM10221) at 1:100 for overnight at 4°C with slow rocking. Secondary Antibody: AlexaFluor 488 at 1:1000 for 1 hour at RT. Counterstain: Phalloidin-iFluor 647 (red) F-Actin stain; Hoechst (blue) nuclear stain at 1:800, 1.6mM for 20 min at RT. (A) Hoechst (blue) nuclear stain. (B) Phalloidin-iFluor 647 (red) F-Actin stain. (C) GABA-A Receptor Delta Antibody (D) Composite.



Immunocytochemistry/Immunofluorescence analysis using Mouse Anti-GABA A Receptor Monoclonal Antibody, Clone N151/3 (ASM10221). Tissue: HaCaT cells. Species: Human. Fixation: Cold 100% methanol for 10 minutes at -20°C. Primary Antibody: Mouse Anti-GABA A Receptor Monoclonal Antibody (ASM10221) at 1:100 for 1 hour at RT. Secondary Antibody: FITC Goat Anti-Mouse (green) at 1:50 for 1 hour at RT. Localization: Diffuse cytoplasm and dull nuclei.



Western Blot analysis of Rat Cell line lysates showing detection of GABA A Receptor protein using Mouse Anti-GABA A Receptor Monoclonal Antibody, Clone N151/3 (ASM10221). Load: 15  $\mu$ g. Block: 1.5% BSA for 30 minutes at RT. Primary Antibody: Mouse Anti-GABA A Receptor Monoclonal Antibody (ASM10221) at 1:1000 for 2 hours at RT. Secondary Antibody: Sheep Anti-Mouse IgG: HRP for 1 hour at RT.

#### **GABA-A Receptor Delta Antibody - Background**

The GABA-A receptor is a member of the superfamily of fast acting ligand-gated ion channels. The individual subunits of these receptors have similar sequences and structural features (1). GABA-A receptors are the major fast inhibitory neurotransmitter gated ion channels in the brain (2).

#### **GABA-A Receptor Delta Antibody - References**

1. Bracamontes J.R. and Steinbach J.H. (2008) J Bio Chem. 283: 26128-26136.
2. Macdonald R.L., Olsen R.W. (1993) Annu Rev Neurosci. 17: 569-602.