

Anti human ERR gamma mouse monoclonal antibody

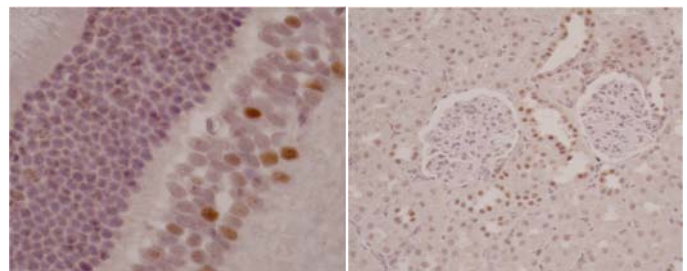
ERR gamma: Estrogen-Related Receptor gamma

| | |
|----------------------|--|
| Code No | PP-H6812-00 |
| Clone No. | H6812 |
| Lot. | A-1 |
| Concentration | 1 mg/mL |
| Volume | 100 uL |
| Ig Class | G2a |
| Description | Estrogen-related receptor gamma (ERRg, ESRRG; NR3B3) is a member of orphan nuclear receptor. ERRg is expressed in brain, kidney, testis, lung, adrenal gland, pancreas, placenta or bone marrow. ERRg was shown to be located in the critical region for Usher's syndrome. |
| Nomenclature | NR3B3 |
| Genbank | AF058291 |
| Origin | Produced in BALB/c mouse ascites after inoculation with hybridoma of mouse myeloma cells (NS-1) and spleen cells derived from a BALB/c mouse immunized with Baculovirus-expressed recombinant human ERR gamma (2-100 aa) . |
| Specificity | This antibody specifically recognizes human ERR gamma and cross reacts with mouse and rat ERR gamma. This antibody does not recognize human ERR alpha and beta. |
| Purification | Ammonium sulfate fractionation |
| Formulation | Physiological saline with 0.1% NaN ₃ as a preservative. |

Application / Recommended Concentration

In order to obtain the best results, optimal working dilutions should be determined by each individual user.

| | |
|--------------------------------------|----------------------|
| Western Blot | 1 ug/mL |
| Non reducing Western Blot | Not yet tested |
| ELISA | 1.7 ug/mL (A450=0.5) |
| Immunoprecipitation | Decide by use |
| Supershift Assay | Not yet tested |
| Chromatin immunoprecipitation | Not yet tested |
| Immunohistochemistry | 10µg/mL |



Rat inner nuclear layer of the retina Rat kidney distal convoluted tubule

Storage Store at 2 - 8 °C up to one month. For long-term storage, the solution may be frozen in working aliquots. Repeated freezing and thawing is not recommended. Storage in a frost-free freezer is not recommended.

Reference Jun Qin, *et al.* Developmental Dynamics, 2007, 236: 810-820

Notes Sodium azide may react with lead and copper plumbing to form explosive metal azides. Flush with large amounts of water during disposal.

FOR RESEARCH ONLY. NOT FOR USE IN HUMANS.

Not for Diagnostic or Therapeutic use. Purchase of this product does not include or carry any right to resell or transfer this product either as a stand-alone product or as a component of another product. Any use of this product other than the permitted use without the express written consent of Perseus Proteomics Inc. is prohibited.

MADE IN JAPAN

Apr 17, 2008