

## Rabbit Anti-CSF1 (Colony Stimulating Factor 1)

**NB-26-01353-50UG**

### Description :

---

Rabbit Anti-CSF1 (Colony Stimulating Factor 1)

### Product information :

---

**Catalog Number:** NB-26-01353-50UG

**Product Type:** Rabbit Polyclonal IgG

**Immunogen Sequence:** Synthetic peptide

**Host:** Rabbit

**Species Reactivity** human

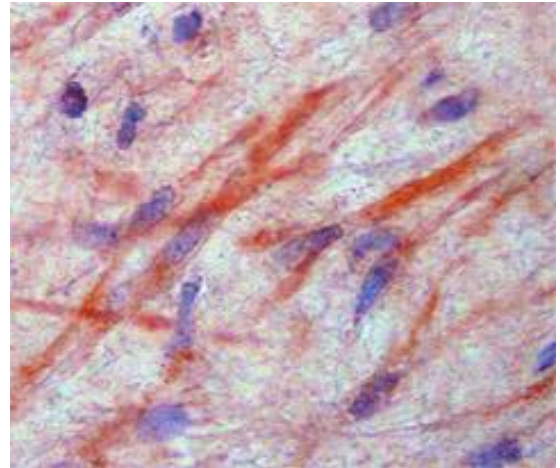
**Format:** Lyophilized powder

**Applications:** Immunohistochemistry: 1-10 ug/ml  
Immunofluorescence: 2-15 ug/ml  
Western Blot: 1 ug/ml

Dilutions listed as a recommendation. Optimal dilution should be determined by investigator.

- Storage :** The product can be stored as supplied for up to 12 months at 2°C-4°C. After reconstitution, aliquot and store at -20°C for higher stability or at 4°C with an appropriate antibacterial agent. Avoid freeze thaw-cycles
- Description/Data :** CSF1 is a cytokine that controls the production, differentiation, and function of monocytes/macrophages. CSF1 increases susceptibility of macrophages to viral infection, and enhances HIV replication in infected macrophages. Nuclear NFAT can CSF-1 promoter in the signaling events induced by L- selectin ligation.

*Images: Immunohistochemical detection of CSF1 in formalin fixed human placenta. 12 µm paraffin-embedded tissue sections were incubated with rabbit polyclonal antibody to CSF1 at 10 µg/mL overnight at 4°C followed by HRP/AEC detection (red) and counterstaining with hematoxylin (blue).*



**For reference only**

**For Research Use Only. Not for Diagnostic or Therapeutic Use.**