

A11885

Leader in Biomolecular Solutions for Life Science



p38 MAPK Rabbit mAb

Catalog No.: A11885 **Recombinant**

Basic Information

Observed MW

41kDa

Calculated MW

41kDa

Category

SMab Recombinant Monoclonal Antibody

Applications

WB,IHC-P,IF/ICC,FC,ELISA

Cross-Reactivity

Human,Mouse,Rat,Hamster,Monkey,Bovine,Pig

Background

The protein encoded by this gene is a member of the MAP kinase family. MAP kinases act as an integration point for multiple biochemical signals, and are involved in a wide variety of cellular processes such as proliferation, differentiation, transcription regulation and development. This kinase is activated by various environmental stresses and proinflammatory cytokines. The activation requires its phosphorylation by MAP kinase kinases (MKKs), or its autophosphorylation triggered by the interaction of MAP3K7IP1/TAB1 protein with this kinase. The substrates of this kinase include transcription regulator ATF2, MEF2C, and MAX, cell cycle regulator CDC25B, and tumor suppressor p53, which suggest the roles of this kinase in stress related transcription and cell cycle regulation, as well as in genotoxic stress response. Four alternatively spliced transcript variants of this gene encoding distinct isoforms have been reported.

Recommended Dilutions

WB	1:500 - 1:2000
IHC-P	1:50 - 1:100
IF/ICC	1:50 - 1:100
FC	1:20 - 1:50

Immunogen Information

Gene ID	Swiss Prot
1432	Q16539

Immunogen

Recombinant protein of human p38 MAPK

Synonyms

RK; p38; CSBP; EXIP; Mxi2; CSBP1; CSBP2; CSPB1; PRKM14; PRKM15; SAPK2A; p38ALPHA; p38 MAPK

Contact

 www.abclonal.com

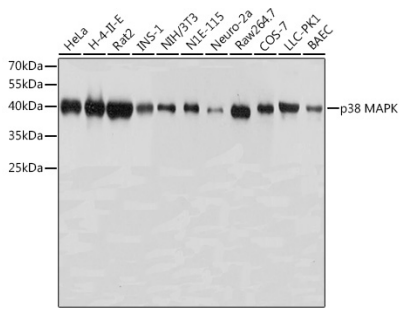
Product Information

Source	Isotype	Purification
Rabbit	IgG	Affinity purification

Storage

Store at -20°C. Avoid freeze / thaw cycles.
Buffer: PBS with 0.02% sodium azide,50% glycerol,pH7.3.

Validation Data



Western blot analysis of various lysates using p38 MAPK Rabbit mAb (A11885).
Secondary antibody: HRP Goat Anti-Rabbit IgG (H+L) (AS014) at 1:10000 dilution.
Lysates/proteins: 25µg per lane.
Blocking buffer: 3% nonfat dry milk in TBST.