

A9770

Leader in Biomolecular Solutions for Life Science



# CD3D Rabbit mAb

Catalog No.: A9770

Recombinant

1 Publications

## Basic Information

### Observed MW

23kDa

### Calculated MW

19kDa

### Category

SMab Recombinant Monoclonal Antibody

### Applications

WB,IF/ICC,FC,ELISA

### Cross-Reactivity

Human,Mouse,Rat

### CloneNo number

ARC1741

## Recommended Dilutions

**WB** 1:500 - 1:1000

**IF/ICC** 1:200 - 1:800

**FC** 1:50 - 1:200

**ELISA** Recommended starting concentration is 1 µg/mL. Please optimize the concentration based on your specific assay requirements.

## Contact



[www.abclonal.com](http://www.abclonal.com)

## Background

The protein encoded by this gene is part of the T-cell receptor/CD3 complex (TCR/CD3 complex) and is involved in T-cell development and signal transduction. The encoded membrane protein represents the delta subunit of the CD3 complex, and along with four other CD3 subunits, binds either TCR alpha/beta or TCR gamma/delta to form the TCR/CD3 complex on the surface of T-cells. Defects in this gene are a cause of severe combined immunodeficiency autosomal recessive T-cell-negative/B-cell-positive/NK-cell-positive (SCIDBNK). Two transcript variants encoding different isoforms have been found for this gene. Other variants may also exist, but the full-length natures of their transcripts has yet to be defined.

## Immunogen Information

### Gene ID

915

### Swiss Prot

P04234

### Immunogen

A synthetic peptide corresponding to a sequence within amino acids 72-171 of human CD3D (P04234).

### Synonyms

T3D; IMD19; CD3DELTA; CD3-DELTA; CD3D

## Product Information

### Source

Rabbit

### Isotype

IgG

### Purification

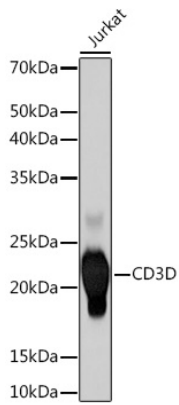
Affinity purification

### Storage

Store at -20°C. Avoid freeze / thaw cycles.

Buffer: PBS with 0.02% sodium azide,0.05% BSA,50% glycerol,pH7.3.

## Validation Data



Western blot analysis of lysates from Jurkat cells, using CD3D Rabbit mAb (A9770) at 1:500 dilution.

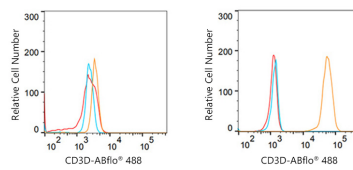
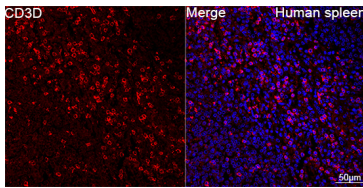
Secondary antibody: HRP-conjugated Goat anti-Rabbit IgG (H+L) (AS014) at 1:10000 dilution.

Lysates/proteins: 25µg per lane.

Blocking buffer: 3% nonfat dry milk in TBST.

Detection: ECL Basic Kit (RM00020).

Exposure time: 60s.



Confocal imaging of paraffin-embedded Human spleen tissue using CD3D Rabbit mAb (A9770, dilution 1:200) followed by a further incubation with Cy3 Goat Anti-Rabbit IgG (H+L) (AS007, dilution 1:500) (Red). DAPI was used for nuclear staining (Blue). Objective: 40x. Perform high pressure antigen retrieval with 0.01 M citrate buffer (pH 6.0) prior to IF staining.

Flow cytometry:  $1 \times 10^6$  Raji cells (negative control, left) and Jurkat cells (right) were surface-stained with CD3D Rabbit mAb (A9770, 2.5 µg/mL orange line) or ABflo® 488 IgG isotype control (AC042, 2.5 µg/mL, blue line). Non-fluorescently stained cells were used as blank control (red line).