

GFAP Antibody
GFAP Antibody, Clone S206A-8
Catalog # ASM10275**Specification**

GFAP Antibody - Product Information

Application	WB
Primary Accession	P14136
Other Accession	NP_001124491.1
Host	Mouse
Isotype	IgG1
Reactivity	Human, Mouse, Rat
Clonality	Monoclonal

Description

Mouse Anti-Human GFAP Monoclonal IgG1

Target/Specificity

Detects ~50kDa. Cross-reacts with GFAP-R416W and other GFAP mutant proteins.

Other Names

Glial fibrillary acidic protein Antibody, Intermediate filament protein Antibody, Astrocyte Antibody, gfapl Antibody, DKFZp459C0729 Antibody, MGC139638 Antibody, FLJ45472 Antibody, AI836096 Antibody, GFAP Antibody

Immunogen

Synthetic peptide amino acids 411-422 (KTVEMRDGEVIK) of human GFAP; 100% identical in rat and mouse

Purification

Protein G Purified

Storage **-20°C**

Storage Buffer

PBS pH 7.4, 50% glycerol, 0.1% sodium azide

Shipping Temperature **Blue Ice or 4°C**

Certificate of Analysis

1 µg/ml of SMC-441 was sufficient for detection of GFAP in 20 µg of rat brain lysate by colorimetric immunoblot analysis using Goat anti-mouse IgG:HRP as the secondary antibody.

Cellular Localization

Cytoplasm

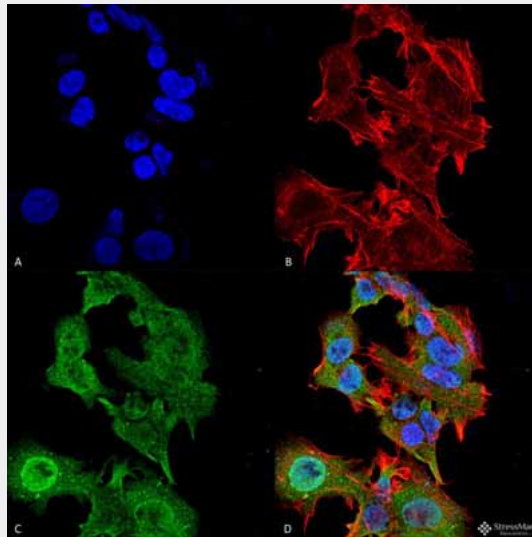
GFAP Antibody - Protocols

Provided below are standard protocols that you may find useful for product applications.

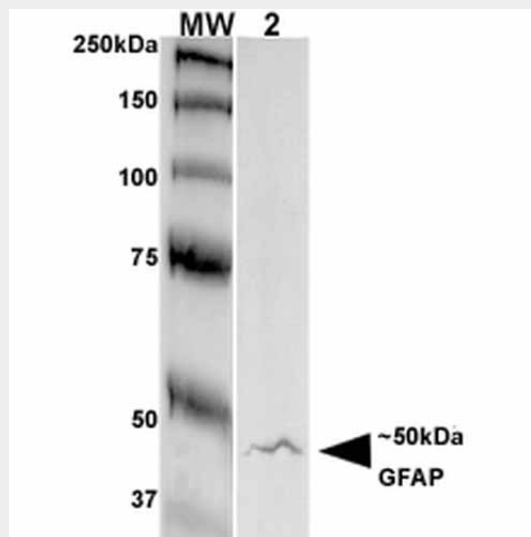
- [Western Blot](#)
- [Blocking Peptides](#)

- [Dot Blot](#)
- [Immunohistochemistry](#)
- [Immunofluorescence](#)
- [Immunoprecipitation](#)
- [Flow Cytometry](#)
- [Cell Culture](#)

GFAP Antibody - Images



Immunocytochemistry/Immunofluorescence analysis using Mouse Anti-GFAP Monoclonal Antibody, Clone S206A-8 (ASM10275). Tissue: Neuroblastoma cell line (SK-N-BE). Species: Human. Fixation: 4% Formaldehyde for 15 min at RT. Primary Antibody: Mouse Anti-GFAP Monoclonal Antibody (ASM10275) at 1:100 for 60 min at RT. Secondary Antibody: Goat Anti-Mouse ATTO 488 at 1:100 for 60 min at RT. Counterstain: Phalloidin Texas Red F-Actin stain; DAPI (blue) nuclear stain at 1:1000, 1:5000 for 60min RT, 5min RT. Localization: Cytoplasm . Magnification: 60X. (A) DAPI (blue) nuclear stain (B) Phalloidin Texas Red F-Actin stain (C) GFAP Antibody (D) Composite.



Western Blot analysis of Rat Brain Membrane showing detection of GFAP protein using Mouse Anti-GFAP Monoclonal Antibody, Clone S206A-8 (ASM10275). Primary Antibody: Mouse Anti-GFAP Monoclonal Antibody (ASM10275) at 1:250.

GFAP Antibody - Background

The 50 kDa type III intermediate filament protein glial fibrillary acidic protein (GFAP) is a major structural component of astrocytes. GFAP associates with the calcium binding protein annexin II-p2 and S-100. Association with these proteins together with phosphorylation regulates GFAP polymerization. Astrocytes respond to brain injury by proliferating (astrogliosis), and one of the first events to occur during astrocyte proliferation is increased GFAP expression. Interestingly, antibodies to GFAP have been detected in individuals with dementia.

GFAP Antibody - References

1. Velasco M.E., et al. (1980) *Cancer*. 45:484.
2. Bonnin J.M., et al. (1984) *Acta Neuropathology*. 62:185.
3. Lee VM-Y., et al. (1984) *J. Neurochem*. 42:25-32 (1984).
4. Trojanowski JQ et al. (1986) *J. Neurochem*. 6(3): 650-660 (1986).
5. Schmidt ML et al; *Lab Invest* 56:282-294 (1987).
6. Kosik KS et al; *Neuron* 1:817-825 (1988).
7. Schmidt ML et al; *Lab Invest* 59:460-466 (1988).
8. Mokuna, K, et al; *J Neurosci Res* 23:396 (1989).
9. Molenaar, et al; *Exp Neurology* 108:1-9 (1990).
10. Tohyama T et al; *Am J Pathol*, 142:871-882 (1993).
11. Tohyama T et al; *Am J Pathol* 142:883-892 (1993).
12. Thilenius, A.R.B., et al; *J. Immunol*. 162(2): 643-650 (1999).