

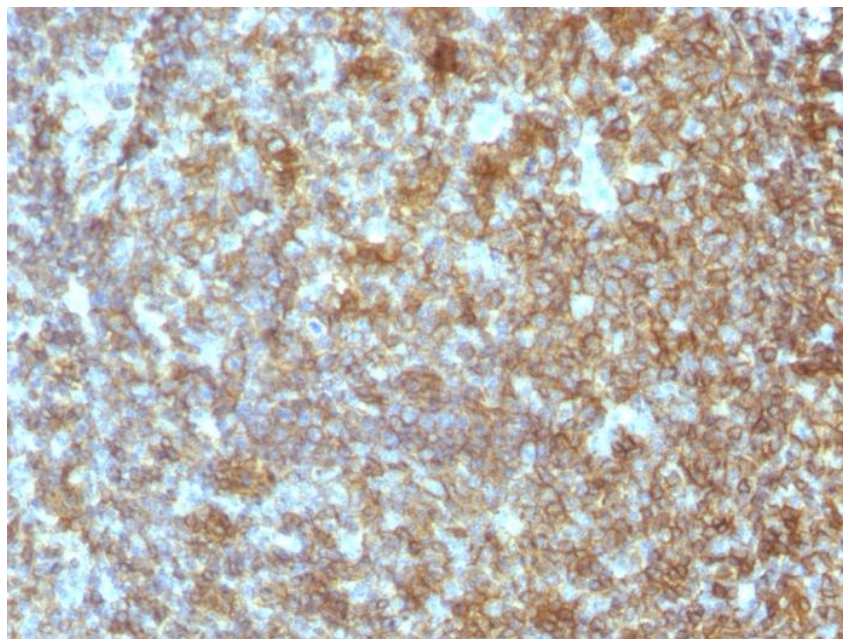
## Mouse Monoclonal Anti-CD45RA [Clone SPM504]

Cat # NB-36-00682X-P0 size: 20 µg

Cat # NB-36-00682X-P1 size: 100 µg

Cat # NB-36-00682X-P2 size: 200 µg

Cat # NB-36-00682X-P2ABX size: 100 µg (BSA & Azide free)



Formalin-fixed, paraffin-embedded human Tonsil stained with CD45RA Monoclonal Antibody (SPM504)

### Description

Mouse Monoclonal Anti-CD45RA (Leucocyte Marker) [Clone SPM504]

### Product Information

<b>Host:</b>	Mouse
<b>Applications:</b>	Flow Cytometry (1-2ug/million cells) Western Blot (1-2ug/ml) Immunofluorescence (1-2ug/ml) Immunohistochemistry (Formalin-fixed) (1-2ug/ml for 30 minutes at RT), (Staining of formalin-fixed tissues requires heating tissue sections in 10mM Tris with 1mM EDTA, pH 9.0, for 45 min at 95°C followed by cooling at RT for 20 minutes) Optimal dilution for a specific application should be determined.
<b>Reactivity:</b>	Human
<b>Clonality:</b>	Monoclonal
<b>Clone:</b>	SPM504

---

<b>Conjugation:</b>	Unconjugated
<b>Isotype:</b>	IgG1, kappa
<b>Formulation:</b>	Prepared in 10mM PBS with 0.05% BSA & 0.05% azide
<b>Purification:</b>	Purified from Bioreactor Concentrate by Protein A/G.
<b>Concentration:</b>	200ug/ml in 10mM PBS with 0.05% BSA & 0.05% azide or WITHOUT BSA & azide at 1.0mg/ml
<b>Storage Instruction:</b>	with azide: - store at 2 to 8°C. without azide: store at -20 to -80°C. Antibody is stable for 24 months. Non-hazardous. No MSDS required.

## Target

---

<b>Protein Name:</b>	CD45RA
<b>Synonyms:</b>	B220, CD45R, GP180, Leukocyte common antigen (LCA), Loc, Ly-5, Lyt-4, Protein tyrosine phosphatase receptor type C (PTPRC), Receptor-type tyrosine-protein phosphatase C, T200 glycoprotein
<b>Gene Symbol:</b>	PTPRC
<b>Gene ID:</b>	5788
<b>Immunogen Region:</b>	Cell Surface
<b>Positive Controls:</b>	Daudi, Raji, IM9 and human lymphocytes. Human lymph nodes, spleen and tonsils.
<b>Immunogen:</b>	Stimulated human leukocytes, 205-220kDa

## Specificity & Comments

---

Recognizes a protein of 205kDa-220kDa, identified as CD45RA (Workshop III). CD45RA is isoforms of the human leukocyte common antigen (CD45). Human CD45 contains three exons which encode peptide segments designated A, B and C, respectively. The differential splicing of the exons generates at least five isoforms, ABC, AB, BC, B and O. This antibody reacts with ABC and BC isoforms. CD45RA is expressed on 40-50% of peripheral CD4+ T-cells, 50% of peripheral CD8+ T-cells, B-cells, and leukemic B-cell lines. T-cells expressing CD45RA are naive or virgin T-cells. T-cells expressing CD45RO are memory T-cells. CD45RA and CD45RO define complementary, predominantly non-overlapping populations of resting peripheral T-cells. This MAb is useful in study on the subpopulation of CD4+ or CD8+ T-cells. It can especially be used to differentiate T-cell lymphomas (CD45RO +ve) from B cell lymphomas (CD45RA +ve).

## References

---

Cobbold S, et. al. Leucocyte Typing III (ed. McMichael AJ et. al.), Oxford University Press, pp789-803, 1987.

***For reference only  
For Research Use Only. Not for Diagnostic or Therapeutic Use.***