

A21198

Leader in Biomolecular Solutions for Life Science



CD86 Rabbit mAb

Catalog No.: A21198 **Recombinant**

Basic Information

Observed MW

60-85kDa

Calculated MW

38kDa

Category

SMab Recombinant Monoclonal Antibody

Applications

WB,IF/ICC,FC,ELISA

Cross-Reactivity

Human,Mouse

CloneNo number

ARC54011

Recommended Dilutions

WB 1:10000 - 1:90000

IF/ICC 1:50 - 1:200

FC 1:50 - 1:200

Background

This gene encodes a type I membrane protein that is a member of the immunoglobulin superfamily. This protein is expressed by antigen-presenting cells, and it is the ligand for two proteins at the cell surface of T cells, CD28 antigen and cytotoxic T-lymphocyte-associated protein 4. Binding of this protein with CD28 antigen is a costimulatory signal for activation of the T-cell. Binding of this protein with cytotoxic T-lymphocyte-associated protein 4 negatively regulates T-cell activation and diminishes the immune response. Alternative splicing results in several transcript variants encoding different isoforms.

Immunogen Information

Gene ID

942

Swiss Prot

P42081

Immunogen

Recombinant fusion protein containing a sequence corresponding to amino acids 20-241 of human CD86 (NP_787058.5).

Synonyms

B70; B7-2; B7.2; LAB72; CD28LG2; CD86

Contact

 www.abclonal.com

Product Information

Source

Rabbit

Isotype

IgG

Purification

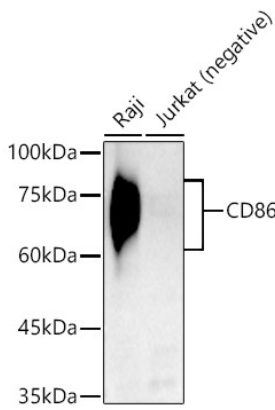
Affinity purification

Storage

Store at -20°C. Avoid freeze / thaw cycles.

Buffer: PBS with 0.05% proclin300,0.05% BSA,50% glycerol,pH7.3.

Validation Data



Western blot analysis of various lysates, using CD86 Rabbit mAb (A21198) at 1:80000 dilution.

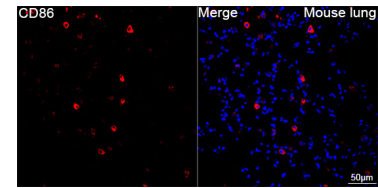
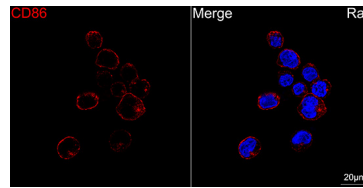
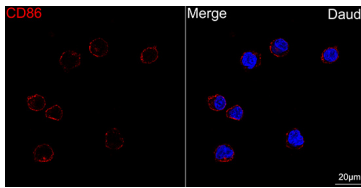
Secondary antibody: HRP Goat Anti-Rabbit IgG (H+L) (AS014) at 1:10000 dilution.

Lysates/proteins: 25µg per lane.

Blocking buffer: 3% nonfat dry milk in TBST.

Detection: ECL Basic Kit (RM00020).

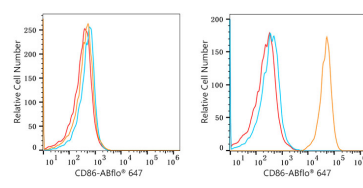
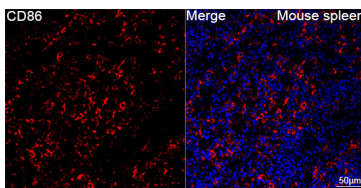
Exposure time: 180s.



Confocal imaging of Daudi cells using CD86 Rabbit mAb (A21198, dilution 1:200) followed by a further incubation with Cy3 Goat Anti-Rabbit IgG (H+L) (AS007, dilution 1:500) (Red). DAPI was used for nuclear staining (Blue). Objective: 100x.

Confocal imaging of Raji cells using CD86 Rabbit mAb (A21198, dilution 1:200) followed by a further incubation with Cy3 Goat Anti-Rabbit IgG (H+L) (AS007, dilution 1:500) (Red). DAPI was used for nuclear staining (Blue). Objective: 100x.

Confocal imaging of paraffin-embedded Mouse lung tissue using CD86 Rabbit mAb (A21198, dilution 1:200) followed by a further incubation with Cy3 Goat Anti-Rabbit IgG (H+L) (AS007, dilution 1:500) (Red). DAPI was used for nuclear staining (Blue). High pressure antigen retrieval performed with 0.01M Citrate Buffer (pH 6.0) prior to IF staining. Objective: 40x.



Confocal imaging of paraffin-embedded Mouse spleen tissue using CD86 Rabbit mAb (A21198, dilution 1:200) followed by a further incubation with Cy3 Goat Anti-Rabbit IgG (H+L) (AS007, dilution 1:500) (Red). DAPI was used for nuclear

Flow cytometry: 1×10^6 K-562 cells (negative control, left) and Raji cells (right) were surface-stained with CD86 Rabbit mAb (A21198, 2.5 µg/mL, orange line) or Rabbit IgG isotype control (AC042, 10 µg/mL, blue line), followed by Alexa

Validation Data

staining (Blue). High pressure antigen retrieval performed with 0.01M Citrate Buffer (pH 6.0) prior to IF staining. Objective: 40x.

Fluor 647 conjugated goat anti-rabbit pAb(1:600 dilution) staining. Non-fluorescently stained cells were used as blank control (red line).