

**WDFY3 Antibody**  
Catalog # ASM10534**Specification**

---

**WDFY3 Antibody - Product Information**

Application	<b>WB</b>
Primary Accession	<a href="#">Q8IZO1</a>
Other Accession	<a href="#">NP_055806.2</a>
Host	<b>Rabbit</b>
Reactivity	<b>Human, Rat</b>
Clonality	<b>Polyclonal</b>

**Description**

Rabbit Anti-Human WDFY3 Polyclonal

**Target/Specificity**

Detects ~400 kDa.

**Other Names**

WDFY3 Antibody, Alfz Antibody, WD repeat and FYVE domain-containing protein 3 Antibody, Autophagy-linked FYVE protein Antibody, KIAA0993 Antibody

**Immunogen**

Synthetic peptide from the N-terminal of Human WDFY3 (aa. 533-544)

**Purification**

Peptide Affinity Purified

Storage **-20°C****Storage Buffer**

PBS, 50% glycerol, 0.09% sodium azide

Shipping Temperature **Blue Ice or 4°C****Certificate of Analysis**

A 1:1000 dilution of SPC-666 was sufficient for detection of WDFY3 in 15 µg of Human HeLa Cell Lysates by ECL immunoblot analysis using goat anti-rabbit IgG:HRP as the secondary antibody.

**Cellular Localization**

Nucleus Membrane | Cytoplasm | Nucleus | Pml Body | Membrane | Peripheral Membrane Protein | Cytoplasmic Side

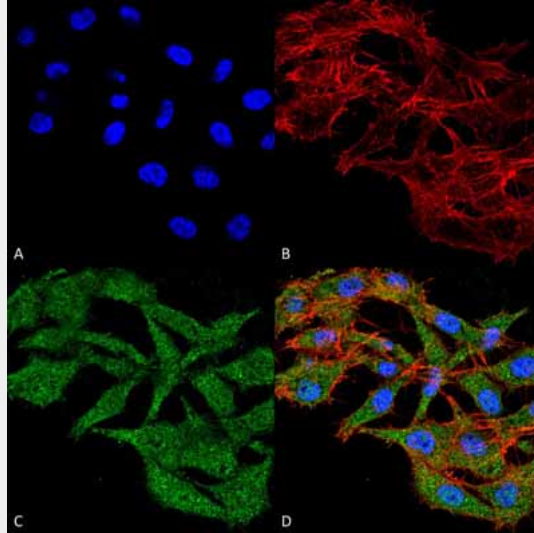
**WDFY3 Antibody - Protocols**

Provided below are standard protocols that you may find useful for product applications.

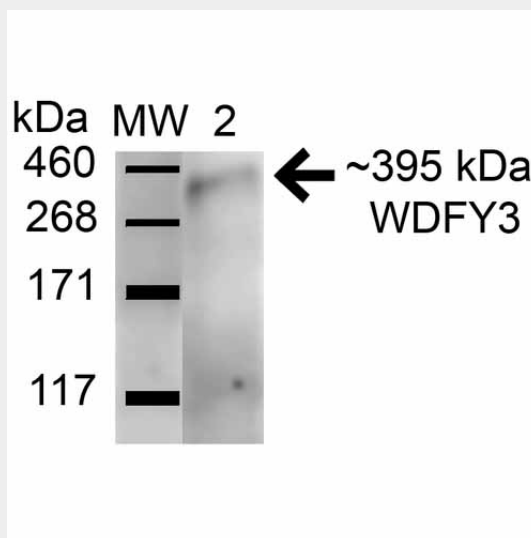
- [Western Blot](#)
- [Blocking Peptides](#)
- [Dot Blot](#)
- [Immunohistochemistry](#)
- [Immunofluorescence](#)

- [Immunoprecipitation](#)
- [Flow Cytometry](#)
- [Cell Culture](#)

**WDFY3 Antibody - Images**



Immunocytochemistry/Immunofluorescence analysis using Rabbit Anti-WDFY3 Polyclonal Antibody (ASM10534). Tissue: Colon carcinoma cell line (RKO). Species: Human. Fixation: 4% Formaldehyde for 15 min at RT. Primary Antibody: Rabbit Anti-WDFY3 Polyclonal Antibody (ASM10534) at 1:100 for 60 min at RT. Secondary Antibody: Goat Anti-Rabbit ATTO 488 at 1:100 for 60 min at RT. Counterstain: Phalloidin Texas Red F-Actin stain; DAPI (blue) nuclear stain at 1:1000, 1:5000 for 60 min at RT, 5 min at RT. Localization: Cytoplasm, Nucleus, Membrane. Magnification: 60X. (A) DAPI nuclear stain. (B) Phalloidin Texas Red F-Actin stain. (C) WDFY3 Antibody. (D) Composite.



Western blot analysis of Human HeLa and 293Trap cell lysates showing detection of 395.2 kDa WDFY3 protein using Rabbit Anti-WDFY3 Polyclonal Antibody (ASM10534). Lane 1: Molecular Weight Ladder (MW). Lane 2: Human HeLa and 293Trap cell lysates. Load: 15 µg . Block: 5% Skim Milk in 1X TBST. Primary Antibody: Rabbit Anti-WDFY3 Polyclonal Antibody (ASM10534) at 1:1000 for 1 hour at RT. Secondary Antibody: Goat Anti-Rabbit HRP at 1:2000 for 60 min at RT. Color Development: ECL solution for 6 min in RT. Predicted/Observed Size: 395.2 kDa.