

AHA1 Antibody
AHA1 Antibody, Clone 25F2.D9
Catalog # ASM10107

Specification

AHA1 Antibody - Product Information

Application	IHC, IP, WB
Primary Accession	Q8BK64
Other Accession	NP_666148.1
Host	Rat
Isotype	IgG2a Kappa
Reactivity	Human, Mouse, Rat
Clonality	Monoclonal

Description

Rat Anti-Mouse AHA1 Monoclonal IgG2a Kappa

Target/Specificity

Detects ~38kDa. Can run up to 45kDa on SDS Page.

Other Names

Aha 1 Antibody, Ahsa1 Antibody, p38 Antibody, HSPC322 Antibody, C14orf3 Antibody, Activator of HSP90 ATPase Antibody, Activator of 90 kDa heat shock protein ATPase homolog 1 Antibody

Immunogen

Mouse Aha1

Purification

Protein G Purified

Storage **-20°C**

Storage Buffer

0.02M potassium phosphate, 0.15M sodium chloride, pH7.2

Shipping Temperature **Blue Ice or 4°C**

Certificate of Analysis

1 µg/ml of SMC-172 was sufficient for detection of Aha1 in 10 µg of rat tissue lysate by colorimetric immunoblot analysis using Goat anti-rat IgG:HRP as the secondary antibody.

Cellular Localization

Cytoplasm | Endoplasmic Reticulum

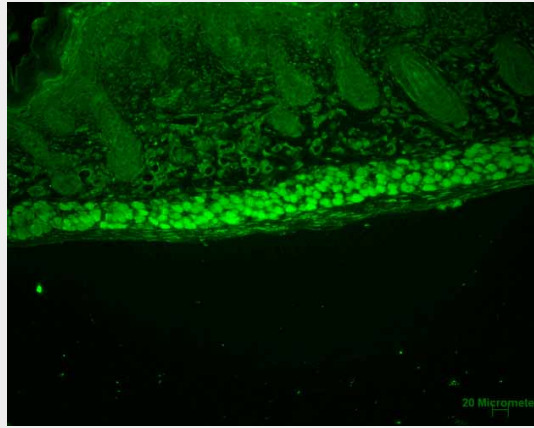
AHA1 Antibody - Protocols

Provided below are standard protocols that you may find useful for product applications.

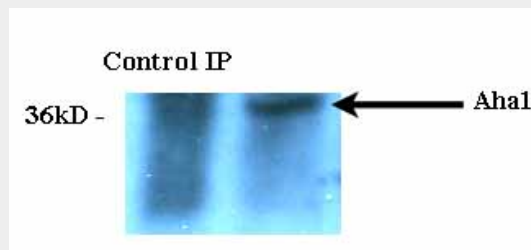
- [Western Blot](#)
- [Blocking Peptides](#)
- [Dot Blot](#)
- [Immunohistochemistry](#)

- [Immunofluorescence](#)
- [Immunoprecipitation](#)
- [Flow Cytometry](#)
- [Cell Culture](#)

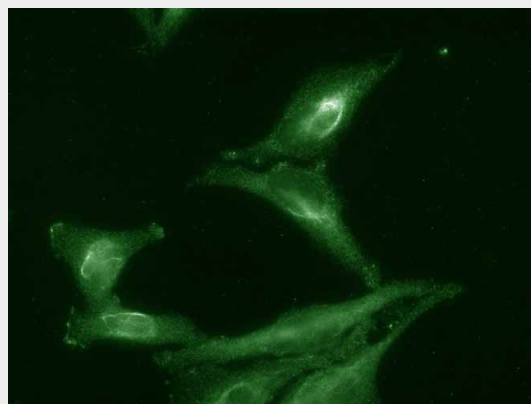
AHA1 Antibody - Images



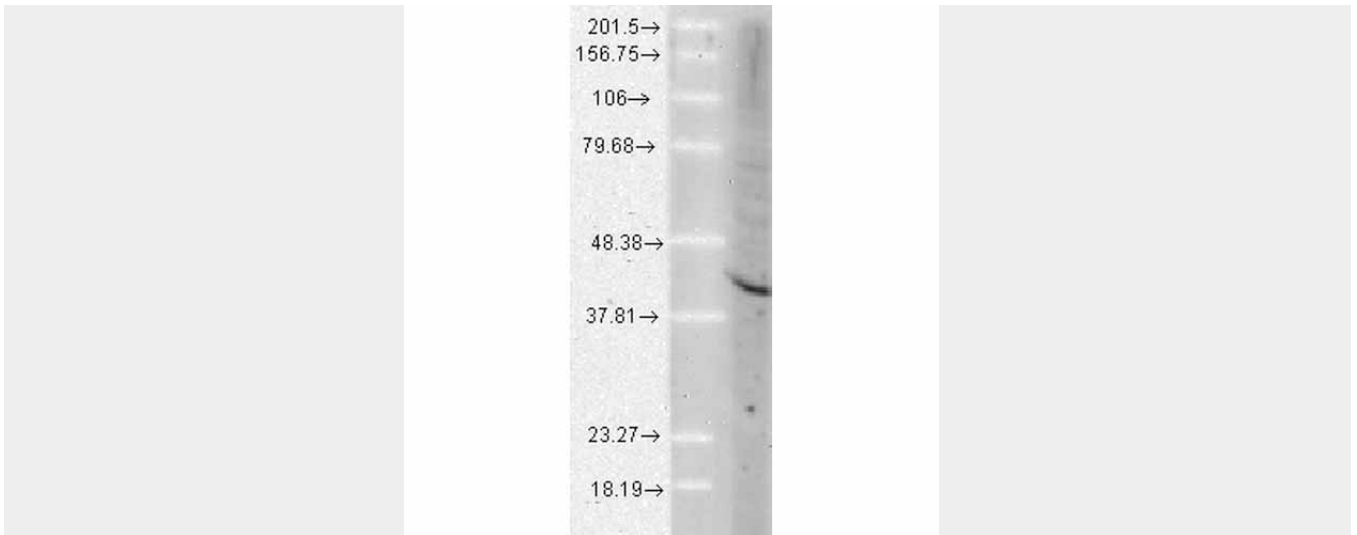
Immunohistochemistry analysis using Rat Anti-Aha1 Monoclonal Antibody, Clone 25F2.D9 (ASM10107). Tissue: backskin. Species: Mouse. Fixation: Bouin's Fixative and paraffin-embedded. Primary Antibody: Rat Anti-Aha1 Monoclonal Antibody (ASM10107) at 1:100 for 1 hour at RT. Secondary Antibody: FITC Goat Anti-Rat (green) at 1:50 for 1 hour at RT. Localization: Uppermost epidermis staining, and muscle.



Immunoprecipitation analysis using Rat Anti-Aha1 Monoclonal Antibody, Clone 25F2.D9 (ASM10107). Tissue: HeLa cells. Species: Human. Primary Antibody: Rat Anti-Aha1 Monoclonal Antibody (ASM10107) at 1:1000.



Immunocytochemistry/Immunofluorescence analysis using Rat Anti-Aha1 Monoclonal Antibody, Clone 25F2.D9 (ASM10107). Tissue: HeLa cells. Species: Human. Primary Antibody: Rat Anti-Aha1 Monoclonal Antibody (ASM10107) at 1:1000. Secondary Antibody: FITC Goat Anti-Rat (green).



Western Blot analysis of Human Cell lysates showing detection of Aha1 protein using Rat Anti-Aha1 Monoclonal Antibody, Clone 25F2.D9 (ASM10107). Load: 15 µg. Block: 1.5% BSA for 30 minutes at RT. Primary Antibody: Rat Anti-Aha1 Monoclonal Antibody (ASM10107) at 1:1000 for 2 hours at RT. Secondary Antibody: Sheep Anti-Mouse IgG: HRP for 1 hour at RT.

AHA1 Antibody - Background

Aha1 is a member of the HSP90 cochaperone family, and is thought to stimulate HSP90 ATPase activity by competing with p23 and other co-chaperones for HSP90 binding (1, 2). It may affect a step in the endoplasmic reticulum to Golgi trafficking. Aha1 also interacts with HSPCA/HSP90 and with the cytoplasmic tail of the vesicular stomatitis virus glycoproteins (VSV G) (3). Aha1 is expressed in numerous tissues, including the brain, heart, skeletal muscle, and kidney, and at low levels, the liver and placenta. Aha1 might be a potential therapeutic strategy to increase sensitivity to HSP inhibitors (4).

AHA1 Antibody - References

1. Hainzl O., Lapina M.C., Buchner J., Richter K. (2009) J Biol Chem. Epub.
2. Harst A., Lin H., Obermann W.M. (2005) Biochem J. 387 (pt.3): 789-796.
3. Lotz G.P., Brychzy A., Heinz S., Obermann W.M. (2008) J Cell Sci. 121(pt.5): 717-723.
4. Holmes J.L., Sharp S.Y., Hobbs S., Workman P. (2008) Cancer Res. 68(4): 1188-1197.