

SLC1A1 antibody

Product Information

Catalog No.:	FNab02606
Size:	100µg
Form:	liquid
Purification:	Immunogen affinity purified
Purity:	≥95% as determined by SDS-PAGE
Host:	Rabbit
Clonality:	polyclonal
Clone ID:	None
IsoType:	IgG
Storage:	PBS with 0.02% sodium azide and 50% glycerol pH 7.3, -20°C for 12 months(Avoid repeated freeze / thaw cycles.)

Background

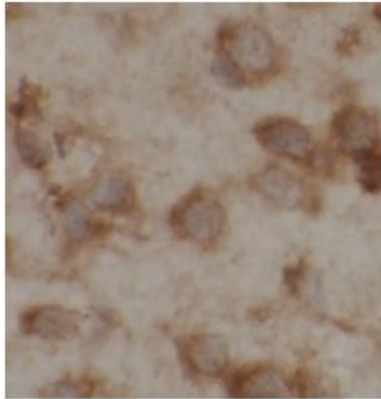
None

Immunogen information

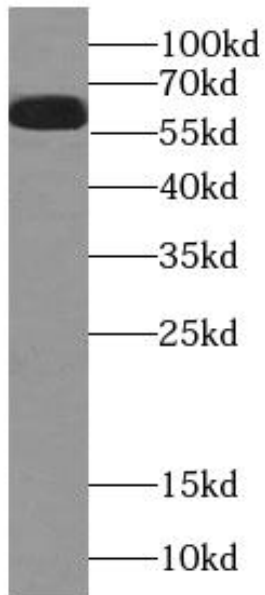
Immunogen:	solute carrier family 1(neuronal/epithelial high affinity glutamate transporter, system Xag), member 1
Synonyms:	Excitatory amino acid transporter 3 Excitatory amino-acid carrier 1 Neuronal and epithelial glutamate transporter Sodium-dependent glutamate/aspartate transporter 3 Solute carrier family 1 member 1 SLC1A1 EAAC1 EAAT3 HEAAC1
Observed MW:	66 kDa
Uniprot ID :	P43005

Application

Reactivity:	Human, Mouse, Rat
Tested Application:	ELISA, WB, IHC
Recommended dilution:	WB: 1:500-1:1000; IHC: 1:20-1:200
Image:	



Immunohistochemistry of paraffin-embedded human brain using FNab02606(SLC1A1 antibody) at dilution of 1:50



mouse ovary tissue were subjected to SDS PAGE followed by western blot with FNab02606(SLC1A1 antibody) at dilution of 1:500