

**ATG4A Antibody**  
Catalog # ASM10510**Specification****ATG4A Antibody - Product Information**

Application	<b>WB</b>
Primary Accession	<a href="#">Q8WYN0</a>
Other Accession	<a href="#">NP_001308216.1</a>
Host	<b>Rabbit</b>
Reactivity	<b>Human</b>
Clonality	<b>Polyclonal</b>

**Description**

Rabbit Anti-Human ATG4A Polyclonal

**Target/Specificity**

Detects ~48 kDa.

**Other Names**

ATG4 autophagy related 4 homolog A (*S. cerevisiae*) Antibody, MGC107179 Antibody, AV169859 Antibody, Autophagy-related cysteine endopeptidase 2 Antibody, hAPG4A Antibody, EC:3.4.22.- Antibody, ATG4A Antibody, Autophagin 2 Antibody, Autophagy related protein 4 homolog A Antibody, Cysteine protease ATG4A Antibody, AUTL2 Antibody, Autl2 Antibody, Autophagy-related protein 4 homolog A Antibody, Atg4a1 Antibody, Autophagin-2 Antibody, Autophagy related 4A cysteine peptidase Antibody, AUT like 2 cysteine endopeptidase Antibody, Autophagy related cysteine endopeptidase 2 Antibody, Apg4a Antibody, AUT-like 2 cysteine endopeptidase Antibody, APG4A Antibody, AI627006 Antibody, ATG4A\_HUMAN Antibody,

**Immunogen**

Synthetic peptide from the N-terminal of Human ATG4A (aa. 58-70)

**Purification**

Peptide Affinity Purified

Storage **-20°C****Storage Buffer**

PBS, 50% glycerol, 0.09% sodium azide

Shipping Temperature **Blue Ice or 4°C****Certificate of Analysis**

A 1:1000 dilution of SPC-629 was sufficient for detection of ATG4A in 15 µg of Human HeLa Cell Lysates by ECL immunoblot analysis using goat anti-rabbit IgG:HRP as the secondary antibody.

**Cellular Localization**

Cytoplasm

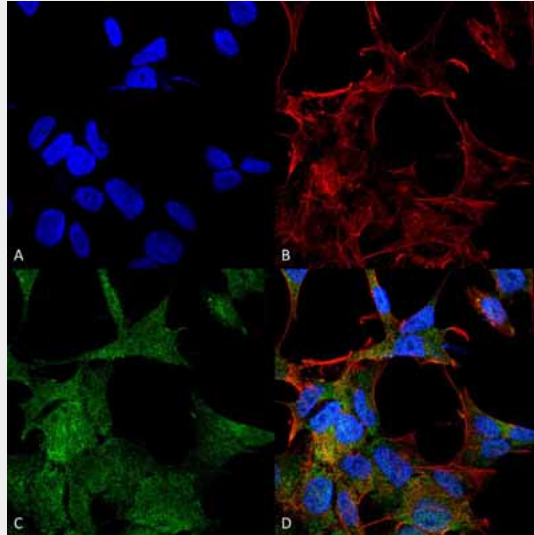
**ATG4A Antibody - Protocols**

Provided below are standard protocols that you may find useful for product applications.

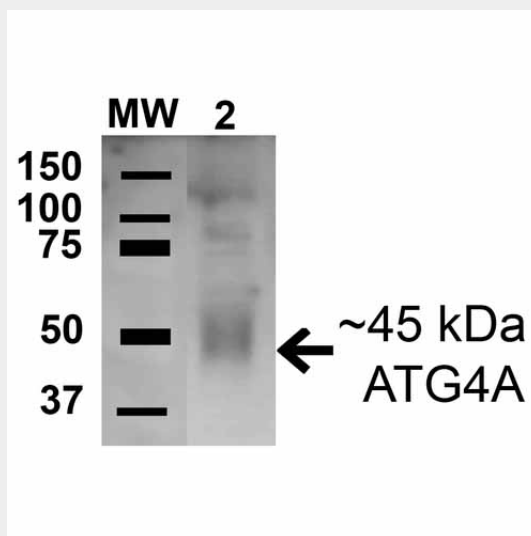
- [Western Blot](#)

- [Blocking Peptides](#)
- [Dot Blot](#)
- [Immunohistochemistry](#)
- [Immunofluorescence](#)
- [Immunoprecipitation](#)
- [Flow Cytometry](#)
- [Cell Culture](#)

**ATG4A Antibody - Images**



Immunocytochemistry/Immunofluorescence analysis using Rabbit Anti-ATG4A Polyclonal Antibody (ASM10510). Tissue: Neuroblastoma cell line (SK-N-BE). Species: Human. Fixation: 4% Formaldehyde for 15 min at RT. Primary Antibody: Rabbit Anti-ATG4A Polyclonal Antibody (ASM10510) at 1:100 for 60 min at RT. Secondary Antibody: Goat Anti-Mouse ATTO 488 at 1:200 for 60 min at RT. Counterstain: Phalloidin Texas Red F-Actin stain; DAPI (blue) nuclear stain at 1:1000, 1:5000 for 60 min at RT, 5 min at RT. Localization: Cytoplasm. Magnification: 60X. (A) DAPI (blue) nuclear stain (B) Phalloidin Texas Red F-Actin stain (C) ATG4A Antibody (D) Composite.



Western blot analysis of Human HeLa cell lysates showing detection of 45.3 kDa ATG4A protein using Rabbit Anti-ATG4A Polyclonal Antibody (ASM10510). Lane 1: Molecular Weight Ladder (MW). Lane 2: Human HeLa cell lysates. Load: 15 µg . Block: 5% Skim Milk in 1X TBST. Primary Antibody:

Rabbit Anti-ATG4A Polyclonal Antibody (ASM10510) at 1:1000 for 1 hour at RT. Secondary Antibody: Goat Anti-Rabbit HRP at 1:2000 for 60 min at RT. Color Development: ECL solution for 6 min in RT. Predicted/Observed Size: 45.3 kda.