

Kir4.1 Antibody
Catalog # ASM10556

Specification

Kir4.1 Antibody - Product Information

| | |
|-------------------|-----------------------------|
| Application | WB |
| Primary Accession | P78508 |
| Other Accession | NP_002232.2 |
| Host | Rabbit |
| Reactivity | Human |
| Clonality | Polyclonal |

Description

Rabbit Anti-Human Kir4.1 Polyclonal

Target/Specificity

Detects ~42 kDa.

Other Names

ATP sensitive inward rectifier potassium channel 10 Antibody, BIRK10 Antibody, KCNJ13 PEN Antibody, Potassium channel inwardly rectifying subfamily J member 10 Antibody, SESAME Antibody inwardly rectifying subfamily J member 10 Antibody, Inward rectifier K(+) channel Kir1.2 Antibody, Potassium channel KCNJ 10 Antibody, ATP-sensitive inward rectifier potassium channel 10 Antibody, Potassium inwardly rectifying channel subfamily J member 10 Antibody, KIR1.2 Antibody, Inwardly rectifying potassium channel Kir1.2 Antibody, ATP-dependent inwardly rectifying potassium channel Kir4.1 Antibody, Glial ATP dependent inwardly rectifying potassium channel KIR4.1 Antibody, Kcnj10 Antibody, KCNJ10 Antibody, IRK10_HUMAN Antibody, KIR4.1 Antibody, Inward rectifier K+ channel KIR1.2 Antibody, ATP dependent inwardly rectifying potassium channel Kir4.1 Antibody, Potassium channel Antibody

Immunogen

Synthetic peptide from the mid-protein of Human Kir4.1

Purification

Peptide Affinity Purified

Storage **-20°C**

Storage Buffer

PBS, 50% glycerol, 0.09% sodium azide

Shipping Temperature

Blue Ice or 4°C

Certificate of Analysis

A 1:1000 dilution of SPC-700 was sufficient for detection of Kir4.1 in 15 µg of rat liver cell lysates by ECL immunoblot analysis using goat anti-rabbit IgG:HRP as the secondary antibody.

Cellular Localization

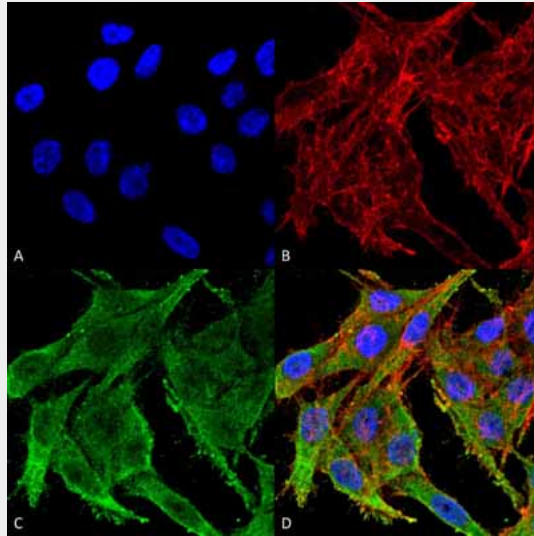
Membrane | Multi-Pass Membrane Protein | Basolateral Cell Membrane

Kir4.1 Antibody - Protocols

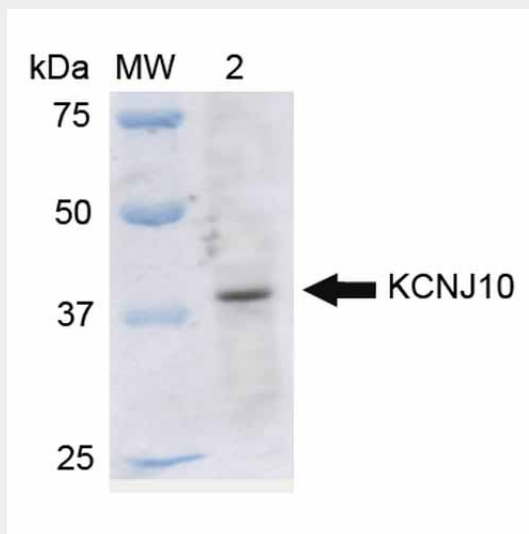
Provided below are standard protocols that you may find useful for product applications.

- [Western Blot](#)
- [Blocking Peptides](#)
- [Dot Blot](#)
- [Immunohistochemistry](#)
- [Immunofluorescence](#)
- [Immunoprecipitation](#)
- [Flow Cytometry](#)
- [Cell Culture](#)

Kir4.1 Antibody - Images



Immunocytochemistry/Immunofluorescence analysis using Rabbit Anti-Kir4.1 Polyclonal Antibody (ASM10556). Tissue: Colon carcinoma cell line (RKO). Species: Human. Fixation: 4% Formaldehyde for 15 min at RT. Primary Antibody: Rabbit Anti-Kir4.1 Polyclonal Antibody (ASM10556) at 1:100 for 60 min at RT. Secondary Antibody: Goat Anti-Rabbit ATTO 488 at 1:100 for 60 min at RT. Counterstain: Phalloidin Texas Red F-Actin stain; DAPI (blue) nuclear stain at 1:1000, 1:5000 for 60 min at RT, 5 min at RT. Localization: Membrane, Cytoplasm. Magnification: 60X. (A) DAPI nuclear stain. (B) Phalloidin Texas Red F-Actin stain. (C) Kir4.1 Antibody. (D) Composite.



Western blot analysis of Rat Liver cell lysates showing detection of ~42.5 kDa Kir4.1 protein using Rabbit Anti-Kir4.1 Polyclonal Antibody (ASM10556). Lane 1: Molecular Weight Ladder (MW).

Lane 2: Rat Liver cell lysates. Load: 15 μ g. Block: 5% Skim Milk in 1X TBST. Primary Antibody: Rabbit Anti-Kir4.1 Polyclonal Antibody (ASM10556) at 1:1000 for 2 hours at RT. Secondary Antibody: Goat Anti-Rabbit IgG: HRP at 1:2000 for 60 min at RT. Color Development: ECL solution for 6 min in RT. Predicted/Observed Size: ~42.5 kDa.