

GABA-A Receptor Alpha-1 Antibody
GABA A Receptor Alpha-1 Antibody, Clone S95-35
Catalog # ASM10222

Specification

GABA-A Receptor Alpha-1 Antibody - Product Information

Application	IHC, WB
Primary Accession	P14867
Other Accession	NP_034380.1
Host	Mouse
Isotype	IgG2A
Reactivity	Human, Mouse, Rat
Clonality	Monoclonal

Description

Mouse Anti-Human GABA-A Receptor Alpha-1 Monoclonal IgG2A

Target/Specificity

Detects ~55kDa. No cross-reactivity against GABA-A-R-Alpha 2 or -Alpha3.

Other Names

ECA4 antibody, EJM antibody, EJM5 antibody, Gaba receptor alpha 1 polypeptide antibody, GABA(A) receptor antibody, GABA(A) receptor subunit alpha 1 antibody, GABA(A) receptor subunit alpha-1 antibody, GABA(A) receptor, alpha 1 antibody, GABRA 1 antibody, GABRA1 antibody, Gamma aminobutyric acid (GABA) A receptor alpha 1 antibody, Gamma aminobutyric acid A receptor alpha 1 antibody, Gamma aminobutyric acid receptor subunit alpha 1 antibody, Gamma-aminobutyric acid receptor subunit alpha-1 antibody, GBRA1_HUMAN antibody

Immunogen

Fusion protein amino acids 355-394 of human GABA-A-R-Alpha1

Purification

Protein G Purified

Storage **-20°C**

Storage Buffer

PBS pH7.4, 50% glycerol, 0.09% sodium azide

Shipping Temperature **Blue Ice or 4°C**

Certificate of Analysis

1 µg/ml of SMC-346 was sufficient for detection of alpha1 GABA receptor in 10 µg of rat brain lysate by colorimetric immunoblot analysis using Goat anti-mouse IgG:HRP as the secondary antibody.

Cellular Localization

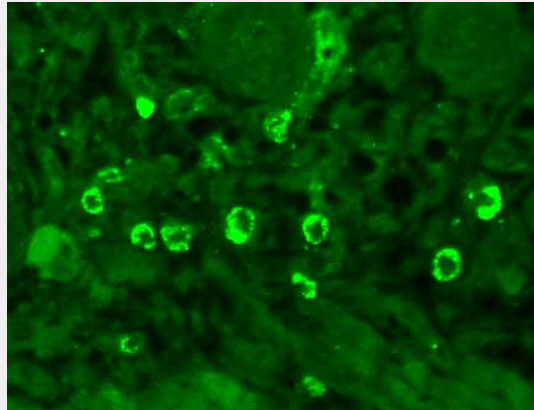
Cell Membrane | Cell Junction | Synapse | Postsynaptic Cell Membrane

GABA-A Receptor Alpha-1 Antibody - Protocols

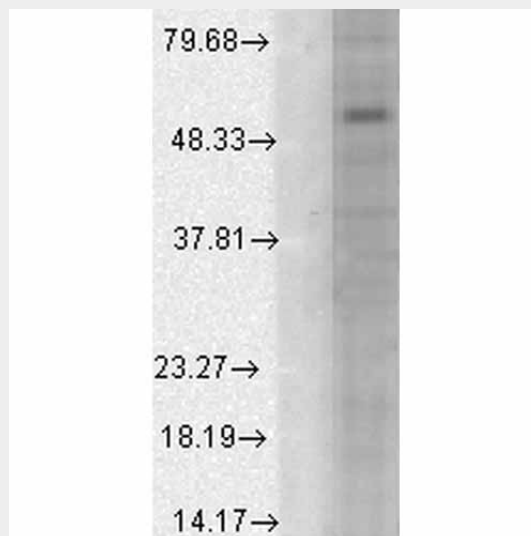
Provided below are standard protocols that you may find useful for product applications.

- [Western Blot](#)
- [Blocking Peptides](#)
- [Dot Blot](#)
- [Immunohistochemistry](#)
- [Immunofluorescence](#)
- [Immunoprecipitation](#)
- [Flow Cytometry](#)
- [Cell Culture](#)

GABA-A Receptor Alpha-1 Antibody - Images



Immunohistochemistry analysis using Mouse Anti-GABA A Receptor Monoclonal Antibody, Clone S95-35 (ASM10222). Tissue: backskin. Species: Mouse. Fixation: Bouin's Fixative and paraffin-embedded. Primary Antibody: Mouse Anti-GABA A Receptor Monoclonal Antibody (ASM10222) at 1:100 for 1 hour at RT. Secondary Antibody: FITC Goat Anti-Mouse (green) at 1:50 for 1 hour at RT. Localization: Dermal Cells.



Western Blot analysis of Human Cell line lysates showing detection of GABA A Receptor protein using Mouse Anti-GABA A Receptor Monoclonal Antibody, Clone S95-35 (ASM10222). Load: 15 µg. Block: 1.5% BSA for 30 minutes at RT. Primary Antibody: Mouse Anti-GABA A Receptor Monoclonal Antibody (ASM10222) at 1:1000 for 2 hours at RT. Secondary Antibody: Sheep Anti-Mouse IgG: HRP for 1 hour at RT.

GABA-A Receptor Alpha-1 Antibody - Background

The GABA-A receptor is a member of the superfamily of fast acting ligand-gated ion channels. The

individual subunits of these receptors have similar sequences and structural features (1). GABA-A receptors are the major fast inhibitory neurotransmitter gated ion channels in the brain (2).

GABA-A Receptor Alpha-1 Antibody - References

1. Bracamontes J.R. and Steinbach J.H. (2008) J Bio Chem. 283: 26128-26136.
2. Macdonald R.L., Olsen R.W. (1993) Annu Rev Neurosci. 17: 569-602.