

RP00653

Leader in Biomolecular Solutions for Life Science



Recombinant Mouse CXCL15/Lungkine Protein

Catalog No.: RP00653 **Recombinant**

Sequence Information

Species	Gene ID	Swiss Prot
HEK293 cells	20309	Q9WVL7

Tags

C-6×His

Synonyms

C-X-C motif chemokine 15;Cxcl15;Lungkine;Small-inducible cytokine B15;Scyb15

Product Information

Source	Purification
HEK293 cells	> 95% by SDS-PAGE.

Endotoxin

< 1 EU/μg of the protein by LAL method.

Formulation

Lyophilized from a 0.2 μm filtered solution of 20mM Tris,150mM NaCl,pH8.0.Contact us for customized product form or formulation.

Reconstitution

Reconstitute to a concentration of 0.1-0.5 mg/mL in sterile distilled water.

Background

Mouse C-X-C motif chemokine 15, also known as Cxcl15, is a secreted protein which is member of the ELRmotif-containing CXC chemokines. It expressed at low levels in fetal lung, the expression restricted to the lung,produced by bronchoepithelial cells and is released into the airways. It plays an important role in lung-specificneutrophil trafficking during normal and inflammatory conditions. It also appears chemotactic for neutrophils.

Basic Information

Description

Recombinant Mouse CXCL15/Lungkine Protein is produced by Human cells expression system. The target protein is expressed with sequence (Gln26-Ala167) of mouse CXCL15/Lungkine (Accession #Q9WVL7) fused with a 6×His tag at the C-terminus.

Bio-Activity

Storage

Store the lyophilized protein at -20°C to -80 °C for long term.
After reconstitution, the protein solution is stable at -20 °C for 3 months, at 2-8 °C for up to 1 week.

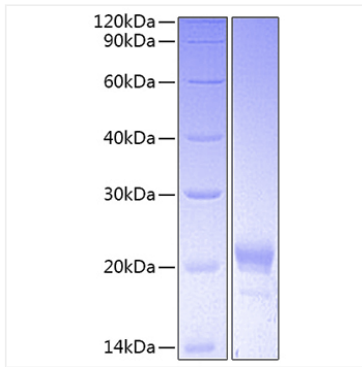
Avoid repeated freeze/thaw cycles.

Contact



www.abclonal.com

Validation Data



Recombinant Mouse
CXCL15/Lungkine Protein was
determined by SDS-PAGE under
reducing conditions with Coomassie
Blue.