

**ASIC1 Antibody**  
**ASIC1 Antibody, Clone S271-44**  
**Catalog # ASM10261****Specification**

---

**ASIC1 Antibody - Product Information**

Application	<b>WB</b>
Primary Accession	<a href="#">O6NXX8</a>
Other Accession	<a href="#">NP_033727.1</a>
Host	<b>Mouse</b>
Isotype	<b>IgG1</b>
Reactivity	<b>Mouse, Rat</b>
Clonality	<b>Monoclonal</b>

**Description**

Mouse Anti-Mouse ASIC1 Monoclonal IgG1

**Target/Specificity**

Detects ~60kDa.

**Other Names**

ACCN2 Antibody, Acid-sensing (proton-gated) ion channel Antibody, Acid-sensing ion channel 1 Antibody, Amiloride-sensitive cation channel 2 neuronal Antibody, BNAC2 Antibody, Brain sodium channel 2 Antibody

**Immunogen**

Fusion protein amino acids 460-526 (Cytoplasmic C-terminus) of mouse ASIC1

**Purification**

Protein G Purified

Storage **-20°C****Storage Buffer**

PBS pH7.4, 50% glycerol, 0.09% sodium azide

Shipping Temperature **Blue Ice or 4°C****Certificate of Analysis**

1 µg/ml of SMC-427 was sufficient for detection of ASIC1 in 20 µg of rat brain lysate by colorimetric immunoblot analysis using Goat anti-mouse IgG:HRP as the secondary antibody.

**Cellular Localization**

Cell Membrane

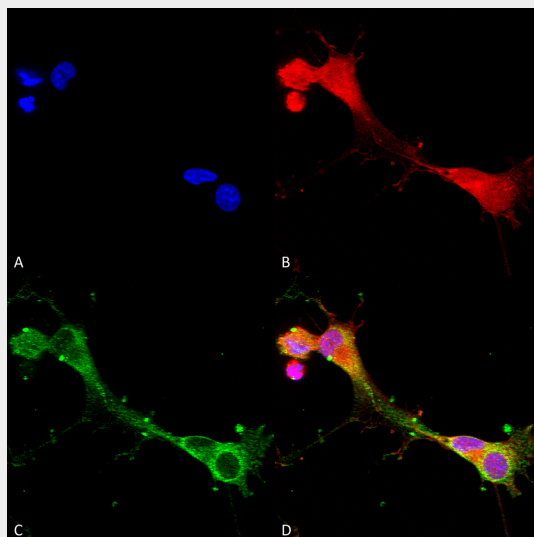
**ASIC1 Antibody - Protocols**

Provided below are standard protocols that you may find useful for product applications.

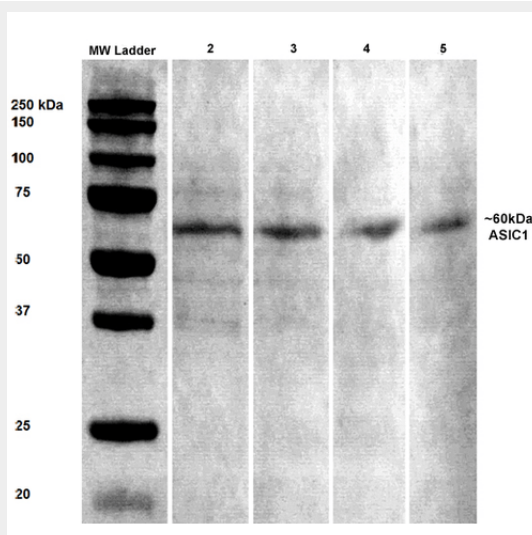
- [Western Blot](#)
- [Blocking Peptides](#)
- [Dot Blot](#)

- [Immunohistochemistry](#)
- [Immunofluorescence](#)
- [Immunoprecipitation](#)
- [Flow Cytometry](#)
- [Cell Culture](#)

### ASIC1 Antibody - Images



Immunocytochemistry/Immunofluorescence analysis using Mouse Anti-ASIC1 Monoclonal Antibody, Clone N271/44 (ASM10261). Tissue: Neuroblastoma cells (SH-SY5Y). Species: Human. Fixation: 4% PFA for 15 min. Primary Antibody: Mouse Anti-ASIC1 Monoclonal Antibody (ASM10261) at 1:100 for overnight at 4°C with slow rocking. Secondary Antibody: AlexaFluor 488 at 1:1000 for 1 hour at RT. Counterstain: Phalloidin-iFluor 647 (red) F-Actin stain; Hoechst (blue) nuclear stain at 1:800, 1.6mM for 20 min at RT. (A) Hoechst (blue) nuclear stain. (B) Phalloidin-iFluor 647 (red) F-Actin stain. (C) ASIC1 Antibody (D) Composite.



Western Blot analysis of Rat brain lysates showing detection of ASIC1 protein using Mouse Anti-ASIC1 Monoclonal Antibody, Clone N271/44 (ASM10261). Primary Antibody: Mouse Anti-ASIC1 Monoclonal Antibody (ASM10261) at 1:100, 1:250, 1:500, and 1:1000.

### ASIC1 Antibody - Background

Acid sensing ion channel ASIC1, also designated ACCN2, BNAC2 and ASIC1a, is present in brain as a 4.3-kb transcript with localization to rat dorsal root ganglia. In situ hybridization of rat brain suggests that ASIC1 is most abundant in the main olfactory bulb, cerebral cortex, hippocampal formation, habenula, basolateral amygdaloid nuclei and cerebellum. ASIC1 and H<sup>+</sup>-gated currents may contribute to the development of fear and anxiety.

### **ASIC1 Antibody - References**

1. Garcia-Anoveros J., Derfler B., Neville-Golden J., Hyman B.T. and Corey D.P. (1997) Proc. Natl. Acad. Sci. USA 94: 1459-1464.
2. Waldmann R., Champigny G., Bassilana F., Heurteaux C. and Lazdunski M. (1997) Nature. 386: 173-177.
3. Grunder S., Geisler H.S., Rainier S. and Fink J.K. (2001) Eur. J. Hum. Genet. 9:672-676.
4. Chen C.C., Zimmer A., Sun W.H., Hall J., Brownstein M.J. and Zimmer A. (2002) Proc. Natl. Acad. Sci. USA 99: 8992-8997.
5. Wemmie J.A., et al. (2004) Proc. Natl. Acad. Sci. USA 101: 3621-3626 .