

Aquaporin 3 Antibody
Catalog # ASM10485**Specification****Aquaporin 3 Antibody - Product Information**

Application	IHC, WB
Primary Accession	P47862
Other Accession	NP_113891.1
Host	Rabbit
Reactivity	Human, Mouse, Rat
Clonality	Polyclonal
Format	HRP

Description

Rabbit Anti-Rat Aquaporin 3 Polyclonal

Target/Specificity

Detects ~31.5kDa. May detect larger glycosylated bands ~35-50kDa.

Other Names

AQP3 Antibody, AQP 3 Antibody, AQP-3 Antibody, Aqp3 Antibody, AQP3_HUMAN Antibody, Aquaglyceroporin-3 Antibody, Aquaporin 3 (GIL blood group) Antibody, Aquaporin 3 (Gill blood group) Antibody, Aquaporin-3 Antibody, Aquaporin3 Antibody, GIL Antibody, Gill blood group Antibody

Immunogen

Produced against the C-terminal peptide (Sequence N-CHLEQPPPSTEAEENVKLAHMKHKEQI) of rat aquaporin 3

Purification

Protein A Purified

Storage -20°C

Storage Buffer

PBS, 50% glycerol, 0.09% sodium azide

Shipping Temperature Blue Ice or 4°C

Certificate of Analysis

0.5 µg/ml of SPC-504 was sufficient for detection of aquaporin 3 in 10 µg of rat kidney tissue lysate by colorimetric immunoblot analysis using Goat anti-rabbit IgG:HRP as the secondary antibody.

Cellular Localization

Membrane

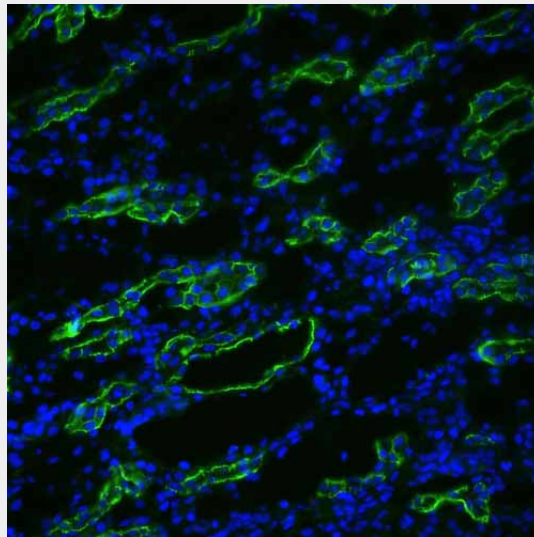
Aquaporin 3 Antibody - Protocols

Provided below are standard protocols that you may find useful for product applications.

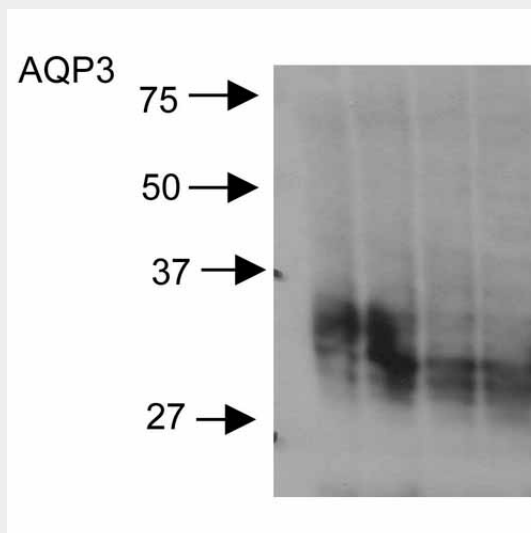
- [Western Blot](#)
- [Blocking Peptides](#)

- [Dot Blot](#)
- [Immunohistochemistry](#)
- [Immunofluorescence](#)
- [Immunoprecipitation](#)
- [Flow Cytometry](#)
- [Cell Culture](#)

Aquaporin 3 Antibody - Images



Immunohistochemistry analysis using Rabbit Anti-Aquaporin 3 Polyclonal Antibody (ASM10485). Tissue: kidney tissue. Species: Rat. Primary Antibody: Rabbit Anti-Aquaporin 3 Polyclonal Antibody (ASM10485) at 1:200. Secondary Antibody: FITC Goat Anti-Rabbit (green).



Western blot analysis of Rat kidney inner medullary homogenates showing detection of Aquaporin 3 protein using Rabbit Anti-Aquaporin 3 Polyclonal Antibody (ASM10485). Primary Antibody: Rabbit Anti-Aquaporin 3 Polyclonal Antibody (ASM10485) at 1:2000.

Aquaporin 3 Antibody - Background

Aquaporins selectively conduct water molecules in and out of the cell, while preventing the passage of ions and other solutes. Known as water channels, they are integral membrane pore proteins (1, 2). Aquaporin 3 is found in the basolateral cell membrane of principal collecting duct

cells and provide a pathway for water to exit these cells (3). AQP3 gene expression is not regulated by vasopressin (4).

Aquaporin 3 Antibody - References

1. Gonen T., Walz T. (2006) Q. Rev. Biophys. 39(4): 361-396.
2. Knepper M.A. (1994) Proc Natl. Acad Sci. USA. 91(14): 6255-6258.
3. Sasaki S., Ishibashi K., and Marumo F. (1998) Annu Rev Physiol. 60: 199-220.
4. Dibas A.I., Mia A.J., Yorio T. (1998) Proc Soc Exp Med. 219(3): 183-199.