

Cytochrome P450 Reductase Antibody
Catalog # ASM10470**Specification**

Cytochrome P450 Reductase Antibody - Product Information

Application	WB
Primary Accession	P00388
Other Accession	NP_113764.1
Host	Rabbit
Reactivity	Human, Mouse, Rat
Clonality	Polyclonal

Description

Rabbit Anti-Rat Cytochrome P450 Reductase Polyclonal

Target/Specificity

Detects ~77kDa.

Other Names

Cytochrome C Reductase Antibody, CCR Antibody, CPR Antibody, P450R Antibody, CYPOR Antibody, DKFZp686G04235 Antibody, FLJ26468 Antibody, NADPH Cytochrome Antibody, P450 Reductase Antibody, NADPH dependent cytochrome P450 reductase Antibody, NADPH-cytochrome P450 reductase Antibody, P450 (cytochrome) oxidoreductase Antibody, P450 Cytochrome Oxidoreductase Antibody, P450R Antibody, POR Antibody

Immunogen

Rat native full-length Cytochrome P450 Reductase purified from liver tissue

Purification

Protein A Purified

Storage **-20°C****Storage Buffer**

PBS pH7.4, 50% glycerol, 0.09% sodium azide

Shipping Temperature

Blue Ice or 4°C**Certificate of Analysis**

1 µg/ml of SPC-210 was sufficient for detection of Cytochrome P450 in 10 µg of rat brain lysate by colorimetric immunoblot analysis using Goat anti-rabbit IgG:HRP as the secondary antibody.

Cellular Localization

Endoplasmic Reticulum | Endoplasmic Reticulum Membrane | Microsome

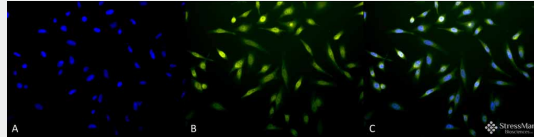
Cytochrome P450 Reductase Antibody - Protocols

Provided below are standard protocols that you may find useful for product applications.

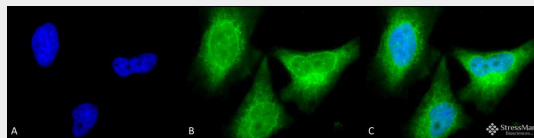
- [Western Blot](#)
- [Blocking Peptides](#)
- [Dot Blot](#)

- [Immunohistochemistry](#)
- [Immunofluorescence](#)
- [Immunoprecipitation](#)
- [Flow Cytometry](#)
- [Cell Culture](#)

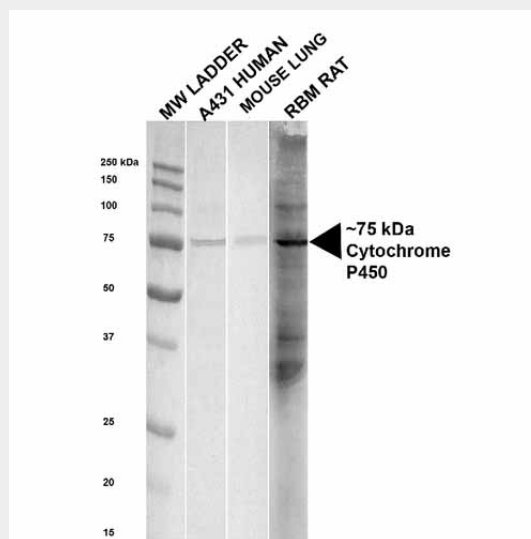
Cytochrome P450 Reductase Antibody - Images



Immunocytochemistry/Immunofluorescence analysis using Rabbit Anti-Cytochrome P450 Reductase Polyclonal Antibody (ASM10470). Tissue: Heat Shocked HeLa Cells. Species: Human. Fixation: 2% Formaldehyde for 20 min at RT. Primary Antibody: Rabbit Anti-Cytochrome P450 Reductase Polyclonal Antibody (ASM10470) at 1:60 for 12 hours at 4°C. Secondary Antibody: FITC Goat Anti-Rabbit (green) at 1:200 for 2 hours at RT. Counterstain: DAPI (blue) nuclear stain at 1:40000 for 2 hours at RT. Localization: Endoplasmic reticulum membrane. Cytosol. Magnification: 20x. (A) DAPI (blue) nuclear stain. (B) Anti-Cytochrome P450 Reductase Antibody. (C) Composite. Heat Shocked at 42°C for 1h.



Immunocytochemistry/Immunofluorescence analysis using Rabbit Anti-Cytochrome P450 Reductase Polyclonal Antibody (ASM10470). Tissue: HeLa Cells. Species: Human. Fixation: 2% Formaldehyde for 20 min at RT. Primary Antibody: Rabbit Anti-Cytochrome P450 Reductase Polyclonal Antibody (ASM10470) at 1:150 for 12 hours at 4°C. Secondary Antibody: R-PE Goat Anti-Rabbit (yellow) at 1:200 for 2 hours at RT. Counterstain: DAPI (blue) nuclear stain at 1:40000 for 2 hours at RT. Localization: Endoplasmic reticulum membrane. Cytosol. Magnification: 100x. (A) DAPI (blue) nuclear stain. (B) Anti-Cytochrome P450 Reductase Antibody. (C) Composite.



Western blot analysis of Human, Mouse, Rat Human, Mouse and Rat Lysates showing detection of ~ 75 kDa Cytochrome P450 Reductase protein using Rabbit Anti-Cytochrome P450 Reductase Polyclonal Antibody (ASM10470). Lane 1: MW ladder. Lane 2: Human lysate, A431. Lane 3: Mouse lung lysate. Lane 4: Rat lysate, Rat Brain Membrane (RBM). Load: 20 µg. Block: 5% milk + TBST

for 1 hour at RT. Primary Antibody: Rabbit Anti-Cytochrome P450 Reductase Polyclonal Antibody (ASM10470) at 1:1000 for 1 hour at RT. Secondary Antibody: Goat Anti-Rabbit HRP antibody at 1:2000 for 1 hour at RT. Color Development: TMB solution for 11 min at RT. Predicted/Observed Size: ~ 75 kDa. Other Band(s): ~30 -250 in Rat lysate only.

Cytochrome P450 Reductase Antibody - Background

Cytochrome P450 Reductase is an enzyme that is required for the transfer of electrons from NADPH to cytochrome P450 in microsomes. It has also been found to transfer electrons to Heme oxygenase and cytochrome B5. Cytochrome P450 Reductase is found localized to the endoplasmic reticulum membrane, tethered by its hydrophobic N-terminal tail. Mutations in the gene encoding Cytochrome P450 Reductase (POR) have been found to cause congenital adrenal hyperplasia, Antley-Bixler syndrome, amenorrhea and disordered steroidogenesis.

Cytochrome P450 Reductase Antibody - References

1. Pandey A.V. and Flück C.E. (2013). *Pharmacology & therapeutics* 138 (2): 229-54.
2. Jensen K. and Møller BL (2010). *Phytochemistry* 71 (2-3): 132-41.
3. Flück C.E. et al. (2004). *Nature Genetics* 36 (3): 228-230.