

RP10025LQ

Leader in Biomolecular Solutions for Life Science



Recombinant Human Sentrin-specific protease 2(catalytic domain)/SEN2 protein

Catalog No.: RP10025LQ **Recombinant**

Sequence Information

Species	Gene ID	Swiss Prot
<I>E. coli</I>	59343	Q9HC62

Tags
His Tag

Synonyms
AXAM2;SMT3IP2;SEN2

Product Information

Source	Purification
<I>E. coli</I>	~95% by SDS-PAGE

Endotoxin

Formulation
20 mM Tris, 150 mM NaCl, 2 mM β ME, 10% Glycerol

Reconstitution

Background

SUMO1-3 (small ubiquitin-related modifiers) are ubiquitin-like proteins that can be conjugated to substrate proteins using a cascade of enzymatic reactions. Protein sumoylation can be reversed by the sentrin-specific (SUMO is also named sentrin) proteases (SENPs). In human cells, SENPs have six members including SENP1, SENP2, SENP3, SENP5, SENP6 and SENP7. SENPs mostly reside in the nucleus. They function to generate mature SUMO1-3 from the SUMO precursors and attenuate signals mediated by sumoylation. The SENP2 catalytic domain comprises amino acid from 365 to 590.

Basic Information

Description

Bio-Activity

Storage

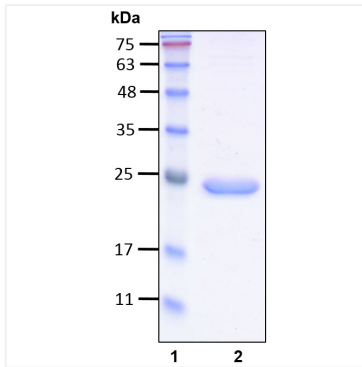
Store at -70°C. This product is stable at $\leq -70^\circ\text{C}$ for up to 1 year from the date of receipt. For optimal storage, aliquot into smaller quantities after centrifugation and store at recommended temperature. Avoid repeated freeze-thaw cycles. Avoid repeated freeze/thaw cycles.

Contact



www.abclonal.com

Validation Data



Recombinant human Senp2-specific protease 2(catalytic domain)/SEN2 protein was determined by SDS-PAGE with Coomassie Blue.